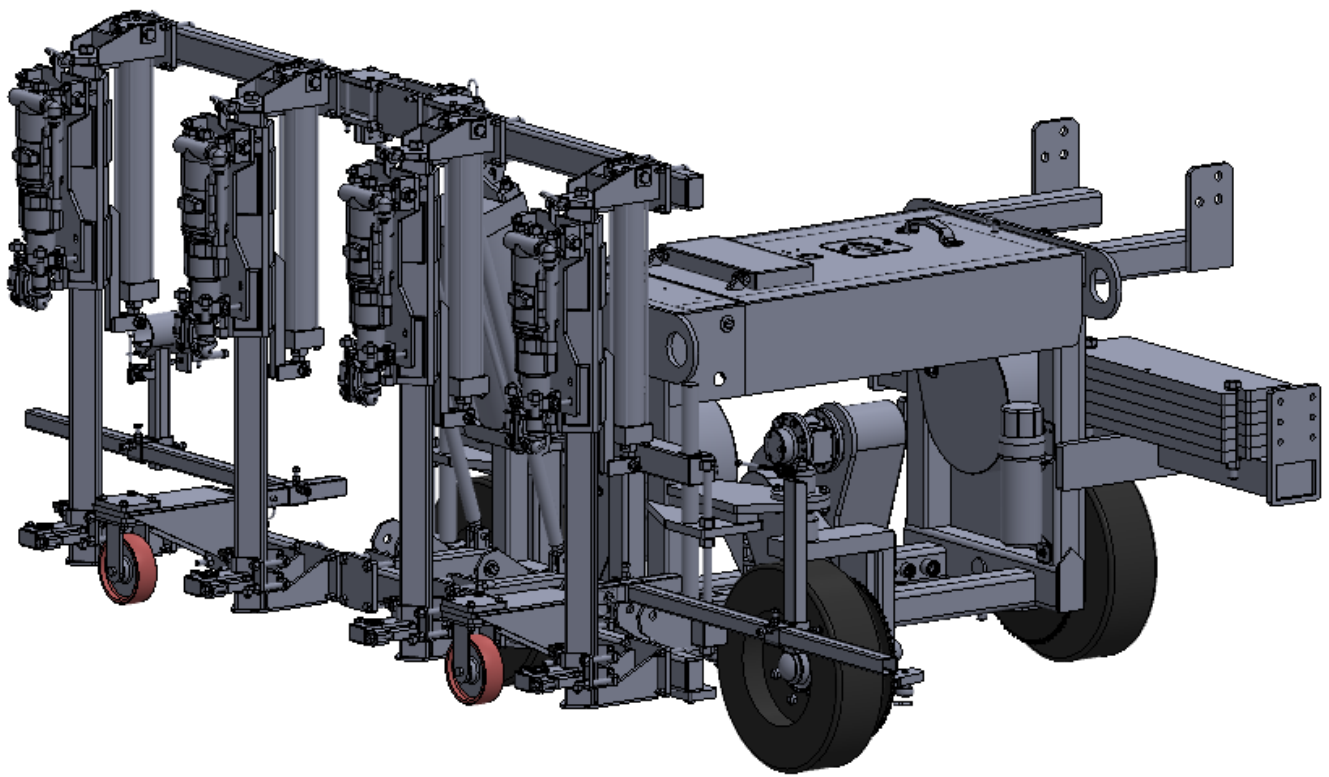


MINNICH

A-4SC

OPERATOR/SERVICE MANUAL



MINNICH MANUFACTURING

1444 ST RT 42
Mansfield, OH 44903

CONTACT

Phone: (419)-903-0010
Email: sales@minnich-mfg.com

REVISION DATE: 02/26/2025

TABLE OF CONTENTS

Chapter 1 - Introduction.....1

 General Warnings.....3

 General Safety.....4

 General Specifications.....9

 Safety Decal Location.....10

Chapter 2 - Manual.....12

 Drill Steel & Bits.....12

 A-4SC Set Up Procedure.....15

 Problem With Drill.....17

 Parts Manual.....19

 Regulator Information.....39

 Lubricator Information.....41

 Notes.....43

 Warranty.....44

 Parts Ordering Online.....45

NOTICE

It is Minnich’s policy to constantly strive to improve our products. The information, specifications, and illustrations in this publication are based on the information in effect at the same time as approval for printing and publishing. Minnich therefore reserves the right to make changes in design and improvements whenever it is believed the efficiency of the machine which has been shipped or curring any obligation to incorporate such improvements in any machine which has been shipped or is in service. It is recommended that users contact Minnich or a Minnich Dealer for latest revisions.

NOTICE

See engine manual for information pertaining to the engine.

NOTICE

If there are any questions regarding the machine or its application which are not covered in this manual or in other literature accompanying this unit, please contact your Minnich Dealer or Minnich Manufacturing at 419-903-0010 or sales@minnich-mfg.com

⚠ WARNING

CALIFORNIA PROPOSITION 65

Engine exhaust and some of its constituents, and some dust created by power sanding, sawing, grinding, drilling and other construction activities contains chemicals known to the State of California to cause cancer, birth defects and other reproductive harm. Some examples of these chemicals are:

Lead from lead-based paints.
Crystalline silica from bricks.
Arsenic and chromium from chemically treated lumber.

Your risk from these exposures varies, depending on how often you do this type of work. To reduce your exposure to these chemicals: ALWAYS work in a well ventilated area, and work with improved safety equipment, such as dust masks that are specifically designed to filter out microscopic particles.

⚠ WARNING



SILICOSIS WARNING

Grinding/cutting/drilling of masonry, concrete, metal and other materials with silica in their composition may give off dust or mist containing crystalline silica.

Silica is a basic component of sand, quartz, brick clay, granite and numerous other minerals and rocks. Repeated and/or substantial inhalation of airborne crystalline silica can cause serious or fatal respiratory disease, including silicosis. In addition, California and some authorities have listed respirable crystalline silica as a substance known to cause cancer. When cutting such materials, always follow the respiratory precautions mentioned above.

⚠ WARNING

RESPIRATORY HAZARDS



Grinding/cutting/drilling of masonry, concrete, metal and fumes containing chemicals known to cause serious or fatal injury or illness, such as respiratory disease, cancer, birth defects or other reproduction harm, if you are unfamiliar with the risks associated with the particular process and/or material being cut or the composition of the tool being used, review the material safety data sheet and/or consult your employer, the material manufacturer/supplier, governmental agencies such as OSHA and NIOSH and other sources on hazardous materials. California and some other authorities, for instance, have published lists of substances known to cause cancer, reproductive toxicity or other harmful effects.

Control dust, mist and fumes at the source where possible. In this regard use good work practices and follow the recommendations of the manufacturers of suppliers, OSHA/NIOSH, and occupational and trade associations. Water should be used for dust suppression when wet cutting is feasible. When the hazards from inhalation of dust, mist and fumes cannot be eliminated, the operator and any bystanders should always wear a respirator approved by OSHA/NIOSH for the materials being used.


GENERAL SAFETY

Do not operate or service the equipment before reading the entire manual. Safety precautions should be followed at all times when operating this equipment. Failure to read and understand the safety messages and operating instructions could result in injury to yourself and others.


This operation manual has been developed to provide complete instruction for the safe and efficient operation. Refer to the engine manufactures instructions for data relative to its safe operation. **Before using, ensure that the operating individual has read and understood all instructions in the manual.** The surrounding environment and you, could be damaged if you do not follow instructions.

SAFETY MESSAGES

The four safety messages shown below will inform you about potential hazards that could injure you or others. The safety messages specifically address the level of exposure to the operator and are preceded by one of four words: **DANGER, WARNING, CAUTION** or **NOTICE**.

 **DANGER**

Indicates a hazardous situation which, if not avoided, **WILL** result in **DEATH** or **SERIOUS INJURY**

 **WARNING**

Indicates a hazardous situation which, if not avoided, **COULD** result in **DEATH** or **SERIOUS INJURY**

 **CAUTION**





Indicates a hazardous situation which, if not avoided, **COULD** result in **MINOR** or **MODERATE INJURY**

NOTICE

Addresses practices not related to personal injury

SAFETY SYMBOLS

Potential hazards associated with the operation of this equipment will be referenced with hazards symbols which may appear throughout this manual in conjunction with safety messages.

SYMBOL	SAFETY HAZARD
	Lethal exhaust gas hazards
	Explosive fuel hazards
	Burn hazard
	Factory Settings

 **WARNING**

DO NOT USE TOOL IF IT IS IN NEED OF SERVICE!

GENERAL SAFETY

⚠ CAUTION

Δ NEVER operate this equipment without proper protective clothing, shatter proof glasses, respirator protection, hearing protection, steel-toes boots and other protective devices required by the job or city and state regulations.



Δ Never operate this equipment when not feeling well due to fatigue, illness or when under medication.



Δ NEVER operate this equipment under the influence of drugs or alcohol.



Δ ALWAYS check the equipment for loosened threads or bolts before starting.

Δ NEVER operate around corrosive chemicals or water containing toxic substances. These fluids could create serious health and environmental hazards. Contact local authorities for assistance.

Δ DO NOT use the equipment for any purpose other than its intended purpose or applications.

NOTICE

Δ This equipment should only be operated by trained and qualified personnel 18 years of age and older.

Δ This equipment is for industrial use only. Whenever necessary, replace nameplate, operation and safety decals when they become difficult to read.

Δ Manufacturer does not assume responsibility for any accident due to equipment modifications. Unauthorized equipment modifications will void all warranties. Any modification which it could lead to change in the original characteristics of the machine should be

made only by the manufacturer who shall confirm that the machine is in comfortability with appropriate safety regulations.

Δ **Never** use accessories or attachments that are not recommended by Minnich for the equipment. Damage to the equipment and/or injury to user may result.

Δ **Always know the location of the nearest fire extinguisher.**



Δ ALWAYS know the location of the nearest first aid kit.



Δ ALWAYS know the location of the nearest phone or keep a phone on the job site. Also, know the phone numbers of the nearest ambulance, doctor and fire department. This information will be invaluable in the case of an emergency.



⚠ DANGER

Δ **NEVER operate the equipment in an explosive atmosphere, near combustible materials, or near flammable or low flash point fluids. An explosion or fire could result causing severe bodily harm or even death.**



⚠ WARNING

Δ NEVER disconnect any emergency or safety devices. These devices are intended for operator safety. Disconnection of these devices can cause severe injury, bodily harm or even death. Disconnection of any of these will void all warranties.

Δ NEVER operate equipment with the covers or guards removed. Keep fingers, hands, hair and clothing away from all moving parts to prevent injury. Wear clothing that will not likely become caught in the equipment or snag on any moving parts.

⚠ CAUTION

Δ ALWAYS be sure the operator is familiar with the proper safety precautions and operating techniques before using.

Δ NEVER leave the machine unattended. Turn off when unattended

GENERAL SAFETY

- Δ DO NOT expose vibrator to rain.
- Δ DO NOT use vibrator motor in damp or wet locations without proper electrical circuits.
- Δ DO NOT immerse the motor part in concrete.
- Δ ALWAYS keep clear of rotating or moving parts while operating.
- Δ NEVER leave the machine unattended while running
- Δ ALWAYS disconnect the motor from the power source when not in use, before servicing, and when changing flexible shafting and vibrator heads.

- Δ Allow the machine to cool before servicing. Contact with hot components can cause serious burns.



- Δ Before Each use, ALWAYS check the motor to make certain that there are no damaged parts and that all parts function properly. If any damage or malfunctioning parts are found, have them repaired or replaced by an authorized service facility.

NOTICE

- Δ ALWAYS secure forms. Make sure the form work is well made and braced to withstand the stresses made by vibration.
- Δ ALWAYS keep vibrator motor clean for better and safer operation.
- Δ ALWAYS store equipment properly when it is not being used. Equipment should be stored in a clean, dry location out of reach of children and unauthorized personnel.
- Δ Use only factory authorized replacement parts.
- Δ Store idle vibrator motor. When not in use, motor should be stored in a dry, safe storage area.

ENVIRONMENTAL SAFETY/DECOMMISSIONING

NOTICE

- Δ DO NOT pour waste or oil directly into the ground, down a drain or into any water source.
- Δ Contact you country department of Public Works or recycling agency in your area and arrange for proper disposal of any electrical components, waste or oil associated with this equipment.



- Δ When the life cycle of this equipment is over, remove battery (if equip) and bring to appropriate facility for lead reclamation. Use safety precautions when handling batteries that contain sulfuric acid.
- Δ When the life cycle of this equipment is over, it is recommended that the unit frame and all other metal parts be sent to a recycling center.

Metal recycling involves the collection of metal from discarded products and its transformation into raw materials to use in many Manufacturing a new product.

Recyclers and manufactures alike promote the process of recycling center promotes energy cost savings.

NOTICE

Decommissioning is a controlled process used to safely retire a piece of equipment that is no longer serviceable. If the equipment poses an unacceptable and unrepairable safety risk due to wear or damage or is no longer cost effective to maintain (beyond life-cycle reliability) and is to be decommissioned (demolition and dismantlement), be sure to follow rules below.

- Δ ALWAYS observe all applicable compulsory regulations relevant to environmental protection, especially fuel storage, the handling of hazardous substances, and the wearing of protective clothing and equipment. Instruct the user as a necessary, or, as the user, request this information and training.

GENERAL SAFETY

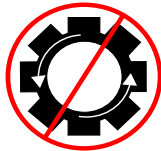
- Δ ALWAYS Dispose of hazardous waste properly. Examples of potentially hazardous waste include used motor oil, fuel, and fuel filters.
- Δ DO NOT use food or plastic containers to dispose hazardous waste.
- Δ DO NOT pour waste or oil directly onto the ground, down or drain or into any waste source.

NOTICE

- Δ ALWAYS keep the machine in proper running condition.
- Δ ALWAYS become familiar with the components of the machine before operation.
- Δ Fix damage to machine and replace any broken parts immediately.
- Δ ALWAYS store equipment properly when it is not being used. Equipment should be stored in a clean, dry location out of the reach of children and unauthorized personnel.
- Δ NEVER lubricate components or attempt service on a running machine

CAUTION

- Δ NEVER tamper with the factory settings of the engine or engine governor. Damage to the engine or equipment can result in operation in speed ranges above the maximum allowability.



BEFORE CONNECTING THE AIR COMPRESSOR:

CAUTION

- Δ Install the drill steel and bits into the drill motors and close the latch retainers and rod guides.
- Δ Make sure that the air compressor is set at an operating pressure of not more than 120 PSIG (8Bar)
- Δ Make sure air line is cleaned out and is of the proper size and pressure rating for the drill unit.
- Δ Make sure the lubricator is filled with proper lubricant. See Minnich recommended lubricant below.

- Δ Make sure all controls are in the "off" position and the lift lever (if so equipped) is in the "up" position.
- Δ Make sure all lock pins are in their locked position.

WARNING

- Δ NEVER attempt to loosen any compressed air hose that is pressurized.
- Δ KEEP AWAY from all hot or spark generating objects, do not smoke when handling fuel.
- Δ So as to facilitate shipment, new or repaired units are not lubricated before delivery to customers.
- Δ DO NOT use hydrocarbons and especially do not use fuel oil for lubricating purposes.
- Δ DO NOT OPERATE MACHINE WITHOUT GUARDS AND COVERS IN PLACE
- Δ ALWAYS disconnect the air supply before changing steel or dismantling the tool for service or repair. For maximum safety we advise the installation of a shut-off valve at the end of the air line.
- Δ NEVER operate the engine with heat shields or guards removed.
- Δ DO NOT remove the engine oil drain plug while the engine is hot. Hot oil will gush out of the engine crankcase and severely scald any persons in the general area of the machine.



NOTICE

- Δ **CLEAR AIR SUPPLY LINE:** Before connecting vibrator, clear the compressed air supply line of possible impurities, contaminants and water.
- Δ **LUBRICATE:** Every day or every four hours of continuous service, pour a ½ teaspoon of non-detergent oil into the quick release coupling. NOTE: An optional oiler/strainer is available.

NOTICE

To find the latest revision of this publication, visit our website at: www.minnich-mfg.com

NOTICE

THIS MANUAL MUST ACCOMPANY THE EQUIPMENT AT ALL TIMES.

NOTICE

Specifications and part numbers are subject to change without notice.

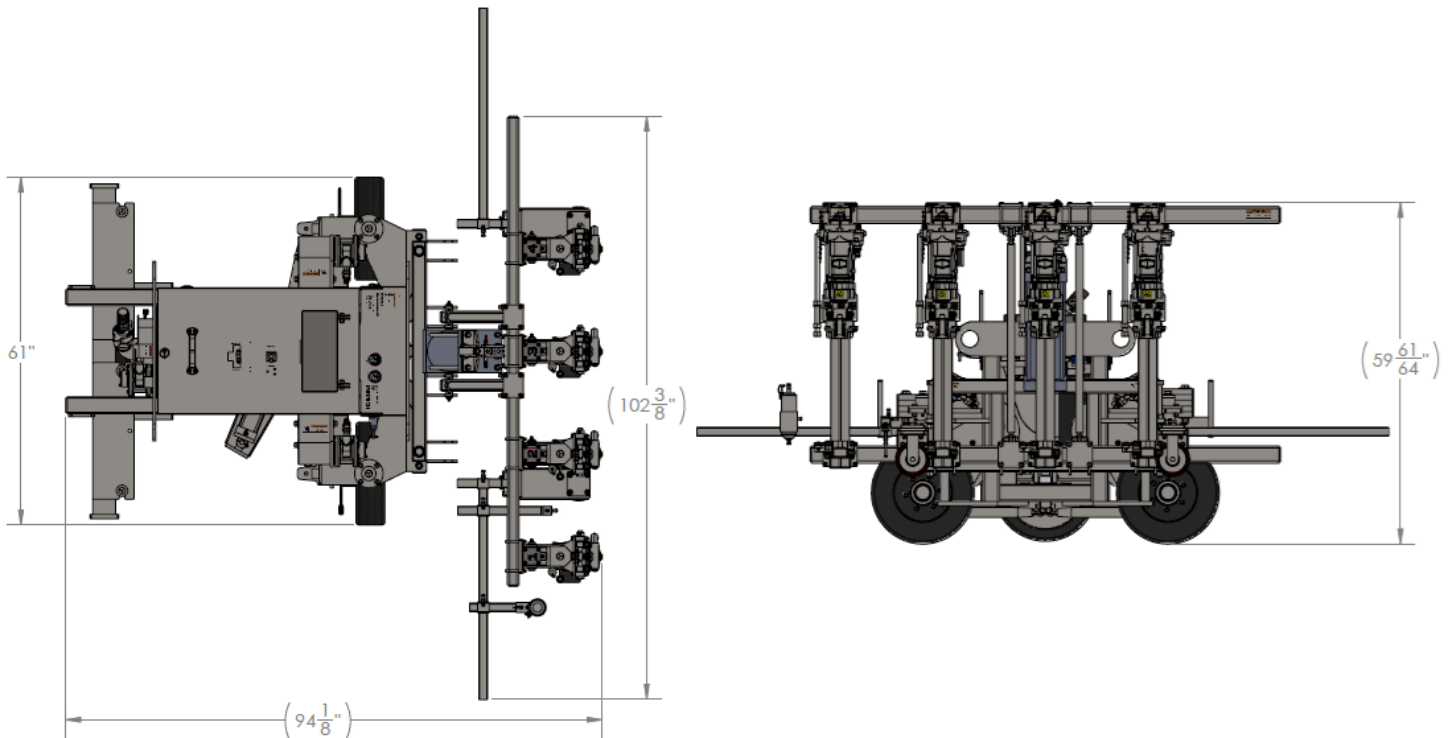
PERSONAL SAFETY

- Δ Stay alert, watch what you are doing, and use common sense when operating the machine.
- Δ **DO NOT** use the tool while tired or under the influence of drugs, alcohol, or medication. A moment of inattention while operating power tools may result in serious personal injury or death.
- Δ Dress properly. **DO NOT** wear loose clothing or jewelry. Tie up long hair. Keep your hair, clothing and gloves away from moving parts. Loose clothes, jewelry, or long hair can be caught in moving parts.
- Δ **DO NOT** overreach. Keep proper footing and balance at all times. Proper footing and balance enables better control in unexpected situations.

SERVICE

- Δ Tool service must be preformed only by qualified repair personnel. Service or maintained preformed by unqualified personnel could result in injury or death
- Δ When servicing a tool, use only identical replacement parts. Use of unauthorized parts may create a risk of injury or death.

A-4SC DRILL



MODEL

A-4SC

Drill Steel Shank	.875" x 4.25" (22.2mm x 107.9mm)
Drill Steel Length U.C.	24" (61.0cm)
Drill Bit Diameter	.625" – 2.50" (15.9mm to 63.5mm)
*Maximum Drill Depth	18" (45.7cm)
Drill Distance From Top of Slab	3.5" – 12" (8.9cm to 30.5cm)
Minimum Cutout Width	48" (121.9cm)
SCFM Required Per Drill	92.2 (43.5D m3/sec)
PSIG Required	110 (7.58 BAR)
Weight A-4SC (basic)	3260lbs. (1433kg)

Horizontal and Vertical drilling
 Skew drill bed is available on the A-4SCW
 On grade kit is available
 Capable of towing air compressor
 Power crab steering
 Power steering
 Power brakes
 Hole Spacing Pointer
 Solid rubber tires
 Adjustable drill height, depth and centers
 Auto control
 Dust collection is available

SPECIFICATIONS SHOWN ARE STANDARD. VARIATIONS TO THE STANDARD ARE AVAILABLE.

***BASED ON 2 PIECE STEEL AND BITS. WHIRLYBITS SHOULD BE 1" (2.5CM) LONGER FOR MAXIMUM DRILLING DEPTH.**

NOTICE

All safety labels on Minnich Manufacturing units have been carefully placed so they can be easily seen at all times. There are several different types of labels on the units. Always keep these warnings free of dirt, concrete, or anything else that restricts visibility. Never remove the labels for any reason. If the label on your machine become worn or in any way difficult to read, call our parts department for replacements.

A



H



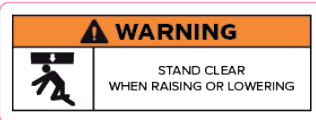
O



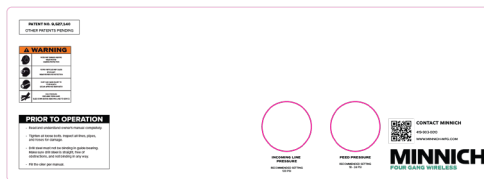
B



C



I



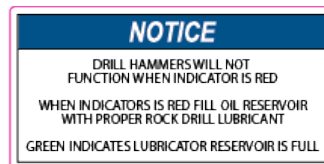
P



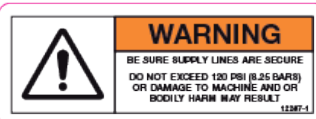
D



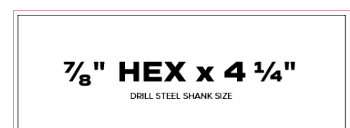
J



E



L



F



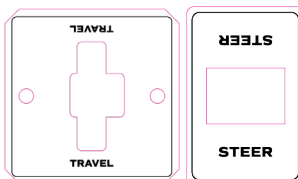
K



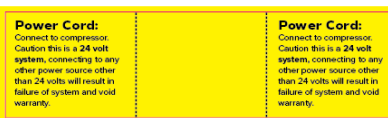
M



G



Q



N

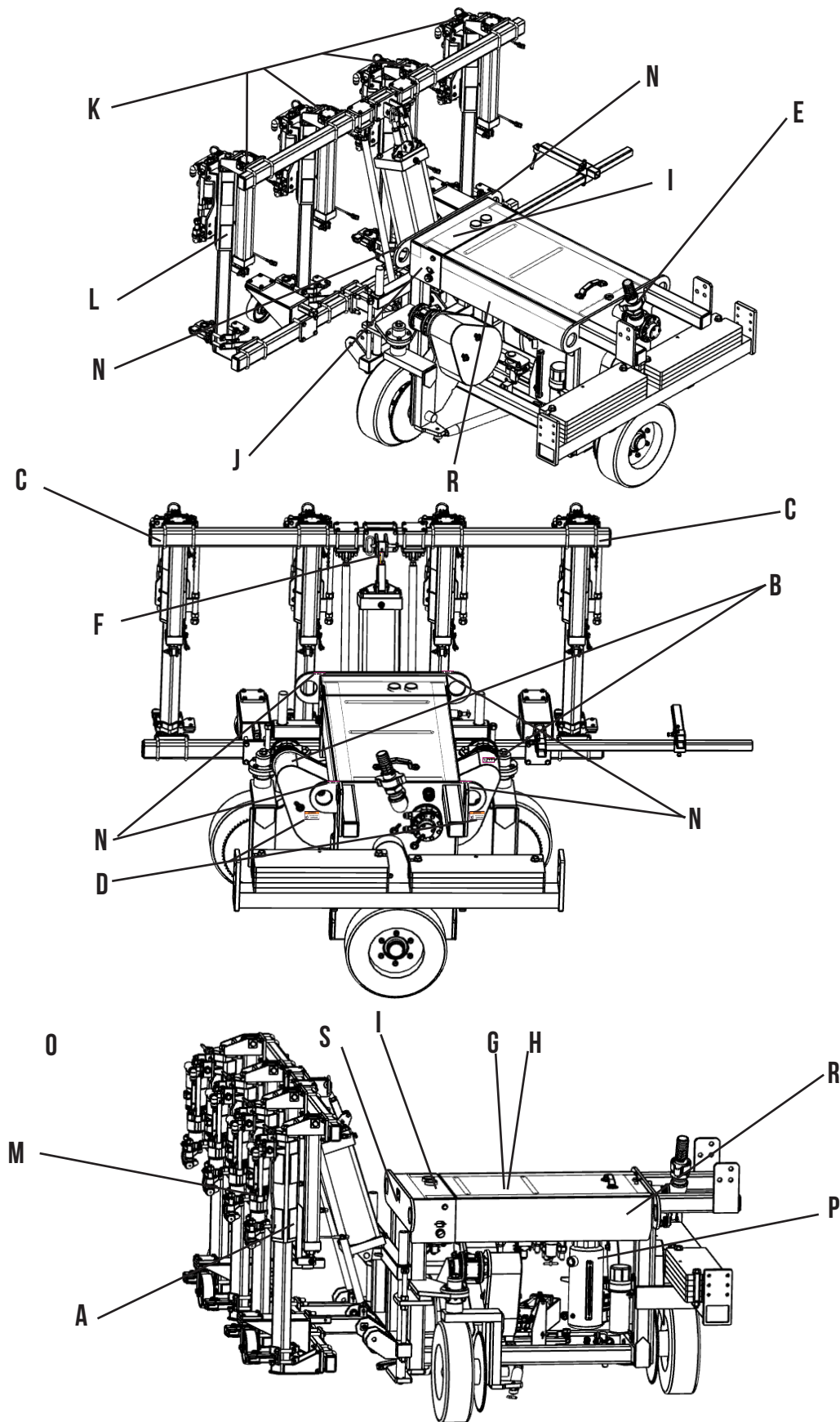


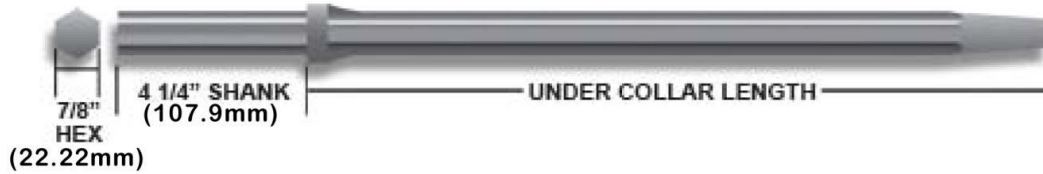
R



S





HOW TO MEASURE STEEL FOR ORDER**WARRANTY POLICY**

All drill steel and bits sold to customer are intended for use in drilling concrete. It is not capable of drilling through steel mesh, rebar or dowel bars. Use in these applications will void all warranties and dramatically shorten bit life. Bit life is also affected by the sharpness of the bit, type of aggregate and condition of concrete. Minnich Manufacturing's drill steel and bit warranty is limited to the warranty provided by the supplier. All warranty claims must be submitted to Minnich for evaluation and sent to the supplier for authorization.

GENERAL NOTES

1. 2" (50.8mm) diameter maximum bit for hydraulic drills.
2. 2 1/2" (63.5mm) diameter maximum bit for pneumatic drills.
3. 5/8" (16mm) diameter is the smallest hole diameter.
4. Cutting speed varies from 15 to 30 seconds for a 6" (152.4mm) deep hole, depending on bit diameter and aggregate.
5. On average you can get 180 holes, 9" (228.6mm) deep per bit.
6. On average you can get 600 holes, 9" (228.6mm) deep per drill steel.
7. Removable bits are carbide and cannot be re-sharpened.
8. Whirly bit steel can be re-sharpened twice.

DRILL STEEL & BITS IN-STOCK

1 PIECE STEEL & BIT (WHIRLY BIT)			
PART NUMBER	HOLE DIAMETER	SHANK SIZE	UC LENGTH
005367-12.00	5/8" (15.9mm)	7/8" x 4 1/4" (22.2mm x 107.9mm)	12" (30.5cm)
005367-24.00	5/8" (15.9mm)	7/8" x 4 1/4" (22.2mm x 107.9mm)	24" (61.0cm)
004209-12.00	3/4" (19.1mm)	7/8" x 4 1/4" (22.2mm x 107.9mm)	12" (30.5cm)
004209-24.00	3/4" (19.1mm)	7/8" x 4 1/4" (22.2mm x 107.9mm)	24" (61.0cm)
004541-12.00	7/8" (22.2mm)	7/8" x 4 1/4" (22.2mm x 107.9mm)	12" (30.5cm)
004541-24.00	7/8" (22.2mm)	7/8" x 4 1/4" (22.2mm x 107.9mm)	24" (61.0cm)
004745-12.00	1" (25.4mm)	7/8" x 4 1/4" (22.2mm x 107.9mm)	12" (30.5cm)
004745-24.00	1" (25.4mm)	7/8" x 4 1/4" (22.2mm x 107.9mm)	24" (61.0cm)

ALL 4 1/4" (107.9MM) SHANKS CAN BE CUT TO A 3 1/4" (82.55MM) SHANKS

TAPERED STEEL			
PART NUMBER	SHANK SIZE	UC LENGTH	NOTES
003749-12.00	7/8" x 4 1/4" (22.2mm x 107.9mm)	12" (30.5cm)	For 1" (2.54cm) Bits ONLY 003747-1.000
003749-24.00	7/8" x 4 1/4" (22.2mm x 107.9mm)	24" (61.0cm)	
004116-12.00	7/8" x 4 1/4" (22.2mm x 107.9mm)	12" (30.5cm)	For 1 1/8" (2.86cm) & Larger Bits ONLY
004116-24.00	7/8" x 4 1/4" (22.2mm x 107.9mm)	24" (61.0cm)	

TAPERED BITS			
PART NUMBER	SHANK SIZE	UC LENGTH	NOTES
003747-1.000	1" (2.54cm)	003839-00000	Use 003749-12.00 or 003749-24.00 Steel ONLY
003747-1.120	1 1/8" (2.86cm)	003901-00000	
003747-1.180	1 3/16" (3.01cm)	003901-00000	Use 004116-12.00 or 004116-24.00 Steel ONLY
003747-1.250	1 1/4" (3.18cm)	003901-00000	
003747-1.310	1 5/16" (3.34cm)	003901-00000	
003747-1.370	1 3/8" (3.49cm)	003901-00000	
003747-1.430	1 7/16" (3.65cm)	003901-00000	
003747-1.500	1 1/2" (3.81cm)	003901-00000	
003747-1.560	1 9/16" (3.97cm)	003901-00000	
003747-1.620	1 5/8" (4.13cm)	003901-00000	
003747-1.750	1 3/4" (4.45cm)	003901-00000	
003747-1.810	1 13/16" (4.60cm)	003901-00000	
003747-1.880	1 7/8" (4.76cm)	003901-00000	
003747-2.000	2" (5.08cm)	003901-00000	

ALL 4 1/4" (107.9MM) SHANKS CAN BE CUT TO A 3 1/4" (82.55MM) SHANKS

"H" THREAD STEEL		
PART NUMBER	SHANK SIZE	UC LENGTH
005061-24.00	7/8" x 4 1/4" (22.2mm x 107.9mm)	24" (61.0cm)
05061B-24.00	1" x 4 1/4" (25.4mm x 107.9mm)	24" (61.0cm)

"H" THREAD BITS		
PART NUMBER	HOLE DIAMETER	NOTES
005140-1.370	1 3/8" (3.49cm)	
005140-1.500	1 1/2" (3.81cm)	
005140-1.620	1 5/8" (4.13cm)	
005140-1.750	1 3/4" (4.45cm)	
005140-1.870	1 7/8" (4.76cm)	
005140-2.000	2" (5.08cm)	
005140-2.250	2 1/4" (5.72cm)	Multiple use bit
005140-2.500	2 1/2" (6.35cm)	

ALL 4 1/4" (107.9MM) SHANKS CAN BE CUT TO 3 1/4" (82.55MM) SHANKS

DRILL STEEL & BITS

USAGE CALCULATION

The calculations below are nominal and could vary depending on the hardness of the concrete, aggregates used and the possibility of bits hitting steel reinforcement.

Whirly Bit, Taper Bit and "H" Thread Bit

(B)Bit=180 holes x 9" (22.86cm)

B=1620" (4114.8cm)

Number of bits needed = (number of holes x hole depth)/1620"

Taper Steel and "H" Thread Steel

(S)Steel=600 holes x 9" (22.86cm)

S=5400" (13716cm)

Number of steels needed = (number of holes x hole depth)/5400"

Example:

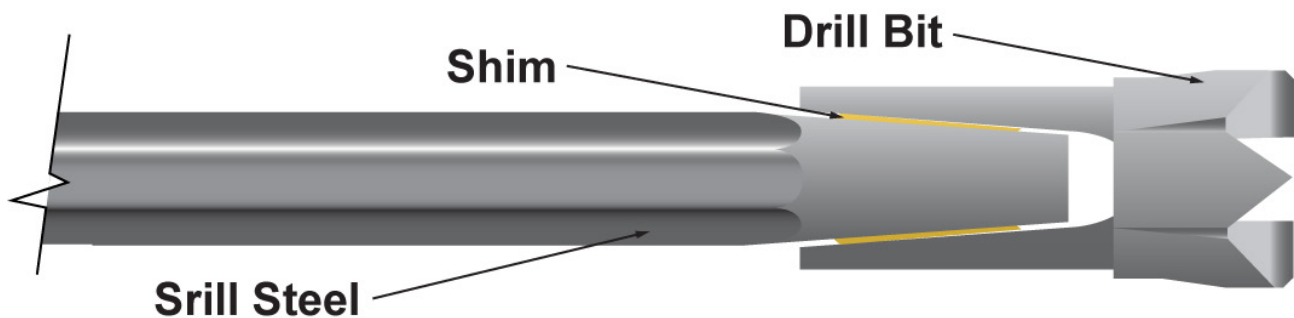
Need 50,000 Holes 12" (30.48cm) Deep for the job.

$(50,000 \times 12)/1620 = 371$ Bits

$(50,000 \times 12)/5400 = 112$ Steels

DRILL BIT INSTALLATION

1. Check to see that the hole through the center of the drill steel is not blocked, if so remove the object.
2. Clean the tapered end of the drill steel and the inside of the drill bit with a non-oily cleaner, making sure not to leave any oily residue.
3. Make sure a brass shim is in the drill bit. If not, carefully roll a new one and slide it into the bit making sure that the ends do not overlap.
4. Put the drill bit on the tapered end of the drill steel and tap it on a firm surface to seat the bit.



DRILL BIT REMOVAL

1. Swing latch so that drill steel can be removed from drill.
2. Pull drill steel out of drill.
3. Using two hammers, place one hammer on bottom side of bit. Using other hammer, strike the bit on the topside. Rotate drill steel 1/4 turn and strike top of bit again. Repeat procedure until bit comes off.

⚠ CAUTION

Bit may pop off of drill steel with some force.

A-4SC SET-UP PROCEDURE

1. CAUTION Before connecting the air compressor:
 - a. Make sure that all lock pins are in their locked position.
 - b. Make sure all controls are in the "off" position and the lift lever (if so equipped) is in the "up" position.
 - c. Make sure the lubricator is filled with proper lubricant. See recommended lubricants below.
 - d. Make sure air line is cleaned out and is of the proper size and pressure rating for the drill unit.
 - e. Make sure that the air compressor is set at an operating pressure of not more than 120 PSIG (8 Bar).
 - f. Install the drill steel and bits into the drill motors and close the latch retainers and rod guides.
2. Connect the air line to the drill in accordance with hose connection instructions.
3. Start the compressor in accordance with manufacturer's instructions.
4. Position the drill unit where the first set of holes is to be drilled, keeping the drill unit back from the edge of the slab slightly. Set the brake if so equipped.
5. With the lift lock still engaged, charge the lift cylinder by toggling the lift lever up and down.
6. With the lift valve in the up position and after making sure that there are no obstructions in the path of the drill bed, remove the lift lock pin.
7. Using the lift lever, lower the drill bed into the drilling position.
8. Measure the drilling position from the top of the slab to the center of the drill steel. If necessary loosen the locknuts and, using the adjusting screws to raise or lower the drill bed to the proper drilling position. Tighten the locknuts.
9. Check to make sure the drill bed is parallel with the slab that is to be drilled into. If necessary, loosen the locknut on the lift cylinder and turn the adjusting screw in or out to align the drill bed with the slab to be drilled.
10. To set the drill depth, remove all the rail locking pins and feed the drill bit into the face of the slab without turning on the drills.
 - a. On Standard Machines: Measure the distance between the drill stop rod and the drill stop pad. Adjust the stop bolt so that the distance between the stop pad and the stop bolt equals the drill depth.
 - b. On Wireless Machines: Measure the distance that the feed cylinder rod extended. Add this distance to the required drill depth. Measure along the feed cylinder tube from the trunnion end to the position sensor; adjust the sensor so that it is set at the distance determined above. Note: After drilling first hole with each drill, it is recommended to measure the actual drill depth and then readjust the position sensor accordingly.
11. Set the feed regulator to 20-24 PSIG (1.4-1.7 Bar).
12. See operating instructions to drill the first set of holes.

Minnich Mfg. Recommended Rock Drill Oil



DO NOT USE ENGINE OIL, DIESEL OR HYDRAULIC FLUID

A-4SC OPERATION PROCEDURE

1. Operator should stand in a safe location with good visibility, not less than 10 feet (3 meters) from the closest point on the machine.
2. Place feed lever(s) in the "in" position to move the bits against the face of the slab.
3. Place the drill lever(s) in the "on" position to turn on the drill motors.
4. When drill motors reach the required depth, place the feed lever in the "out" position.
5. When the drill steel is clear of the hole, place the drill lever in the "off" position.
6. The drills will automatically retract and shut off when the hole depth has been reached.
7. Release the brake if so equipped. Position the drill for the next set of holes to be drilled. Reset the brake if so equipped.
8. On units equipped with steering, turn the wheel or press the joy stick right or left to steer the unit right or left.
9. On units with the "crab" feature, it is helpful to turn the crab "on" and then steer right or left to keep the machine tight against the face of the slab while repositioning the unit.
10. There is a low-level oil indicator, this must be "green" in order for the hammers to operate. If the indicator is "red", please fill oil reservoir with proper rock drill oil.

WARNING

Flying Debris: During drilling, chips may be ejected.

WARNING

Dust: Concrete dust will be ejected from the hole.

WARNING

Loud Noise: Air compressor and drill unit will create loud noise levels

WARNING

Pinch Points: Keep clear of all moving parts.

PROBLEM: DRILL DOES NOT RUN

CAUSE

REMEDY

DRILL NOT GETTING AIR

1. On Multi Drill units, switch airline with drill that is working properly. If drill now runs check the air control valve. If the valve works, check the drill.
2. Check clave on air compressor and drill unit to be certain they are completely open
3. Check compressor. It should have 100SCFM (47.20m³/sec.) per drill and 110PSI (7.6 BAR) at drill manifold when drilling with large drills.
4. Make certain all fittings are connected properly and not leaking.

COUPLING OR HOSE OBSTRUCTION Remove Obstruction

FAILURE IN THE ELECTRICAL CIRCUIT

Check switches, connections, coils, ground & voltage. If the power unit (backhoes, grader, ETC.) is being jump started, check the AMPS & voltage being jump supplied to coils from the battery, it may be too low.

FAILURE OF DRILL SOLENOID VALVE
(MULTI DRILL UNITS WITH REMOTE
ELECTRICAL CONTROLS)

Check valve - you should be able to feel the solenoid move when it is actuated. Make sure you have current to the solenoid coil. Replace the solenoid if there is no movement.

MECHANICAL FAILURE OF DRILL

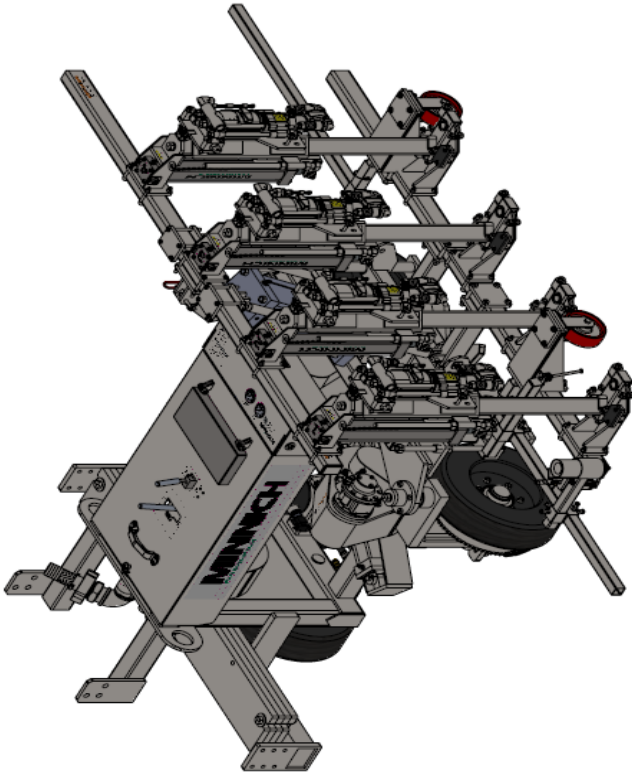
Disassemble the drill & inspect for damaged parts.

PROBLEM SOLVING

PROBLEM: DRILL RUNS SLOW OR DOES NOT DRILL EFFECTIVELY

CAUSE	REMEDY
NOT ENOUGH AIR REACHING DRILL. IT SHOULD HAVE 100SCFM (47.2DM ³ /SEC.) PER DRILL AND 110 PSI (7.6 BAR)	On Multi Drill units. Turn off one or two drills. If the remaining drills pick up speed, check the air compressor.
RESTRICTION IN AIR LINE	A foreign object in the air line or possibly a reduction in the air line caused by a reducer fitting.
TOO SMALL AIR LINE	Following are supply line sizes for drilling: A-1 Single Drill 3/4" (19mm) A-2 Two Drills 1-1/4" (38.75mm) A-3& A-4 Three & four drills 1-1/2" (38.1mm) A-5 Five Drills 2" (50.8mm)
AIR PRESSURE TO CYLINDER "FEEDING" DRILL INTO CONCRETE NOT ADJUSTED PROPERLY	Excessive pressure can cause drill to "bind up" in the hole. Pressure that is too low will not "feed" the drill into the concrete. The air pressure required varies with the drill model. Horizontal- all units with large drills use 22-26 PSI (1.5-1.8 bar). Drill units using the 15LB (6.8kg) class drill will use 16-20 PSI (1.1-1.4 Bar). Vertical - all drill units use 5-6 PSI (0.34-0.41 Bar). With the correct air pressure, the drill steel should have a slight rattle.
INSUFFICIENT AIR FLOW TO KEEP HOLE BLOWN CLEAN	Check for obstruction in the blow tube in the drill.
LUBRICATOR PUTTING OUT TOO MUCH OIL TO DRILL	If you notice more than a light film of oil on the air deflector on the bottom of the drill adjust the lubricator, make certain you are using the type of oil called for in the operation and maintenance manual.
MECHANICAL BLINDING OF DRILL CARRIER	Make sure the eight bearing pads are adjusted correctly. The square tube that the drill carrier slides on must be free of rust so that the carrier slides freely, drill steel must not be binding in the guide bearing.
BENT DRILL STEEL, WORN DRILL BIT OR DRILLING INTO REBAR	Replace the drill steel or bit. If drilling into rebar, move the drill.
USING 3 1/4" (8.25CM) SHANK DRILL STEEL IN 4 1/4" (10.8CM) SHANK CHUCK DRILL	The drill steel will rotate but it will not allow the drill piston to hammer properly, replace it with the correct 4 1/4" (10.8cm) drill steel.

REVISIONS				ITEM NO.	PART NUMBER	DESCRIPTION	QTY.
REV.	DESCRIPTION	DATE	APPROVED				
A	REMOVED (1) A10020-00009 (1) A10021-00007 (1) A10022-00009 (1) A10050-00003 AND (1) 12632-00000 REPLACED WITH (1) A13686-00000	09/01/2023	RJ				
				1	000708-00004	MODEL & SERIAL # NAME PLATE	1
				2	006037-1.500	5/16"-18 X 1-1/2" GRADE 5 H.H.C.S.	2
				3	006040-4.500	1/2"-13 X 4-1/2" GRADE 5 H.H.C.S.	2
				4	006043-5.500	3/4"-10 X 5-1/2" GRADE 5 H.H.C.S.	2
				5	006043-6.500	3/4"-10 X 6-1/2" GRADE 5 H.H.C.S.	2
				6	006104-00000	FLAT WASHER, 1/4 USS	4
				7	006106-00000	FLAT WASHER, 5/16 USS	2
				8	006112-00000	FLAT WASHER, 1/2 USS	4
				9	006118-00000	FLAT WASHER, 3/4 USS	8
				10	006145-00000	LOCKWASHER, #10	4
				11	006148-00000	LOCKWASHER, 5/16	2
				12	006237-0.750	1/4"-20 X 3/4" F.C.S.H.C.S.	4
				13	006257-1.750	RHMS, #10-24 X 1-3/4 SLOTTED	4
				14	006262-00001	SCREW, DRIVE HD RD. #4 X 1/4"	2
				15	006402-00000	1/4"-20 NYLON LOCKNUT	4
				16	006406-00000	1/2"-13 LOCKNUT	2
				17	006409-00000	3/4"-10 LOCKNUT	4
				18	006654-00000	NUT, HEX #10-24 NC THREAD	4
				19	010949-00000	DIE-CAST GRAB HANDLE	1
				20	012033-00000	MANIFOLD MOUNTING PLATE	1
				21	012611-00000	COUNTER WEIGHT	7
				22	012634-00000	BASE PANEL	1
				23	012636-00000	VALVE MOUNTING BAR	1
				24	012694-00000	MANIFOLD MOUNT	1
				25	012973-00000	QUICK LUNCH PIN	1
				26	0A5934-00005	ASSEMBLY, CASTER MOUNTING	1
				27	0A6964-00000	ASSEMBLY, POINTER & MARKER	1
				28	0A7927-00021	ASSEMBLY, A-4SC LIFT GROUP	1
				29	0A9350-00000	7/8" X 4-1/4" CHUCK TOYO 50# AIR DRILL	4
				30	A11387-00004	DECAL, KIT FOR: A-4SC	1
				31	A11706-00003	ASSEMBLY, CONTROL PANEL COVER WELDMENT	1
				32	A12117-00001	ASSEMBLY, OPERATOR'S MANUAL STORAGE CANNISTER	1
				33	A12585-00005	ASSEMBLY, A-4SC CONTROL & LUBRICATOR	1
				34	A12593-00003	ASSEMBLY, A-4SC MULTI FUNCTION CONTROL	1
				35	A12594-00005	ASSEMBLY, A-4SC FEED MANIFOLD	1
				36	A12595-00000	ASSEMBLY, NON-WIRELESS TRAVEL CURCUIT	1
				37	A13270-00004	ASSEMBLY, SPRING WHIP CABLE	4
				38	A13686-00000	ASSEMBLY, 3/4/5 GANG ROLLER FRAME	1



#

REVISIONS		TOLERANCES		Dimension in accordance with ANSI Y14		DO NOT SCALE DRAWING		TITLE: ASSEMBLY, A-4SC DRILL		ROUTING NO. LOCATION: A12600-00023		DRAWN BY: RJ		CHECKED BY: AEB		APPROVED BY: 08/28/2023		REV. LEVEL: A	
TOLERANCES		Dimension in accordance with ANSI Y14		DO NOT SCALE DRAWING		TITLE: ASSEMBLY, A-4SC DRILL		ROUTING NO. LOCATION: A12600-00023		DRAWN BY: RJ		CHECKED BY: AEB		APPROVED BY: 08/28/2023		REV. LEVEL: A		A	
TOLERANCES		Dimension in accordance with ANSI Y14		DO NOT SCALE DRAWING		TITLE: ASSEMBLY, A-4SC DRILL		ROUTING NO. LOCATION: A12600-00023		DRAWN BY: RJ		CHECKED BY: AEB		APPROVED BY: 08/28/2023		REV. LEVEL: A		A	
TOLERANCES		Dimension in accordance with ANSI Y14		DO NOT SCALE DRAWING		TITLE: ASSEMBLY, A-4SC DRILL		ROUTING NO. LOCATION: A12600-00023		DRAWN BY: RJ		CHECKED BY: AEB		APPROVED BY: 08/28/2023		REV. LEVEL: A		A	
TOLERANCES		Dimension in accordance with ANSI Y14		DO NOT SCALE DRAWING		TITLE: ASSEMBLY, A-4SC DRILL		ROUTING NO. LOCATION: A12600-00023		DRAWN BY: RJ		CHECKED BY: AEB		APPROVED BY: 08/28/2023		REV. LEVEL: A		A	
TOLERANCES		Dimension in accordance with ANSI Y14		DO NOT SCALE DRAWING		TITLE: ASSEMBLY, A-4SC DRILL		ROUTING NO. LOCATION: A12600-00023		DRAWN BY: RJ		CHECKED BY: AEB		APPROVED BY: 08/28/2023		REV. LEVEL: A		A	
TOLERANCES		Dimension in accordance with ANSI Y14		DO NOT SCALE DRAWING		TITLE: ASSEMBLY, A-4SC DRILL		ROUTING NO. LOCATION: A12600-00023		DRAWN BY: RJ		CHECKED BY: AEB		APPROVED BY: 08/28/2023		REV. LEVEL: A		A	
TOLERANCES		Dimension in accordance with ANSI Y14		DO NOT SCALE DRAWING		TITLE: ASSEMBLY, A-4SC DRILL		ROUTING NO. LOCATION: A12600-00023		DRAWN BY: RJ		CHECKED BY: AEB		APPROVED BY: 08/28/2023		REV. LEVEL: A		A	
TOLERANCES		Dimension in accordance with ANSI Y14		DO NOT SCALE DRAWING		TITLE: ASSEMBLY, A-4SC DRILL		ROUTING NO. LOCATION: A12600-00023		DRAWN BY: RJ		CHECKED BY: AEB		APPROVED BY: 08/28/2023		REV. LEVEL: A		A	
TOLERANCES		Dimension in accordance with ANSI Y14		DO NOT SCALE DRAWING		TITLE: ASSEMBLY, A-4SC DRILL		ROUTING NO. LOCATION: A12600-00023		DRAWN BY: RJ		CHECKED BY: AEB		APPROVED BY: 08/28/2023		REV. LEVEL: A		A	
TOLERANCES		Dimension in accordance with ANSI Y14		DO NOT SCALE DRAWING		TITLE: ASSEMBLY, A-4SC DRILL		ROUTING NO. LOCATION: A12600-00023		DRAWN BY: RJ		CHECKED BY: AEB		APPROVED BY: 08/28/2023		REV. LEVEL: A		A	
TOLERANCES		Dimension in accordance with ANSI Y14		DO NOT SCALE DRAWING		TITLE: ASSEMBLY, A-4SC DRILL		ROUTING NO. LOCATION: A12600-00023		DRAWN BY: RJ		CHECKED BY: AEB		APPROVED BY: 08/28/2023		REV. LEVEL: A		A	
TOLERANCES		Dimension in accordance with ANSI Y14		DO NOT SCALE DRAWING		TITLE: ASSEMBLY, A-4SC DRILL		ROUTING NO. LOCATION: A12600-00023		DRAWN BY: RJ		CHECKED BY: AEB		APPROVED BY: 08/28/2023		REV. LEVEL: A		A	
TOLERANCES		Dimension in accordance with ANSI Y14		DO NOT SCALE DRAWING		TITLE: ASSEMBLY, A-4SC DRILL		ROUTING NO. LOCATION: A12600-00023		DRAWN BY: RJ		CHECKED BY: AEB		APPROVED BY: 08/28/2023		REV. LEVEL: A		A	
TOLERANCES		Dimension in accordance with ANSI Y14		DO NOT SCALE DRAWING		TITLE: ASSEMBLY, A-4SC DRILL		ROUTING NO. LOCATION: A12600-00023		DRAWN BY: RJ		CHECKED BY: AEB		APPROVED BY: 08/28/2023		REV. LEVEL: A		A	
TOLERANCES		Dimension in accordance with ANSI Y14		DO NOT SCALE DRAWING		TITLE: ASSEMBLY, A-4SC DRILL		ROUTING NO. LOCATION: A12600-00023		DRAWN BY: RJ		CHECKED BY: AEB		APPROVED BY: 08/28/2023		REV. LEVEL: A		A	
TOLERANCES		Dimension in accordance with ANSI Y14		DO NOT SCALE DRAWING		TITLE: ASSEMBLY, A-4SC DRILL		ROUTING NO. LOCATION: A12600-00023		DRAWN BY: RJ		CHECKED BY: AEB		APPROVED BY: 08/28/2023		REV. LEVEL: A		A	
TOLERANCES		Dimension in accordance with ANSI Y14		DO NOT SCALE DRAWING		TITLE: ASSEMBLY, A-4SC DRILL		ROUTING NO. LOCATION: A12600-00023		DRAWN BY: RJ		CHECKED BY: AEB		APPROVED BY: 08/28/2023		REV. LEVEL: A		A	
TOLERANCES		Dimension in accordance with ANSI Y14		DO NOT SCALE DRAWING		TITLE: ASSEMBLY, A-4SC DRILL		ROUTING NO. LOCATION: A12600-00023		DRAWN BY: RJ		CHECKED BY: AEB		APPROVED BY: 08/28/2023		REV. LEVEL: A		A	
TOLERANCES		Dimension in accordance with ANSI Y14		DO NOT SCALE DRAWING		TITLE: ASSEMBLY, A-4SC DRILL		ROUTING NO. LOCATION: A12600-00023		DRAWN BY: RJ		CHECKED BY: AEB		APPROVED BY: 08/28/2023		REV. LEVEL: A		A	
TOLERANCES		Dimension in accordance with ANSI Y14		DO NOT SCALE DRAWING		TITLE: ASSEMBLY, A-4SC DRILL		ROUTING NO. LOCATION: A12600-00023		DRAWN BY: RJ		CHECKED BY: AEB		APPROVED BY: 08/28/2023		REV. LEVEL: A		A	
TOLERANCES		Dimension in accordance with ANSI Y14		DO NOT SCALE DRAWING		TITLE: ASSEMBLY, A-4SC DRILL		ROUTING NO. LOCATION: A12600-00023		DRAWN BY: RJ		CHECKED BY: AEB		APPROVED BY: 08/28/2023		REV. LEVEL: A		A	
TOLERANCES		Dimension in accordance with ANSI Y14		DO NOT SCALE DRAWING		TITLE: ASSEMBLY, A-4SC DRILL		ROUTING NO. LOCATION: A12600-00023		DRAWN BY: RJ		CHECKED BY: AEB		APPROVED BY: 08/28/2023		REV. LEVEL: A		A	
TOLERANCES		Dimension in accordance with ANSI Y14		DO NOT SCALE DRAWING		TITLE: ASSEMBLY, A-4SC DRILL		ROUTING NO. LOCATION: A12600-00023		DRAWN BY: RJ		CHECKED BY: AEB		APPROVED BY: 08/28/2023		REV. LEVEL: A		A	
TOLERANCES		Dimension in accordance with ANSI Y14		DO NOT SCALE DRAWING		TITLE: ASSEMBLY, A-4SC DRILL		ROUTING NO. LOCATION: A12600-00023		DRAWN BY: RJ		CHECKED BY: AEB		APPROVED BY: 08/28/2023		REV. LEVEL: A		A	
TOLERANCES		Dimension in accordance with ANSI Y14		DO NOT SCALE DRAWING		TITLE: ASSEMBLY, A-4SC DRILL		ROUTING NO. LOCATION: A12600-00023		DRAWN BY: RJ		CHECKED BY: AEB		APPROVED BY: 08/28/2023		REV. LEVEL: A		A	
TOLERANCES		Dimension in accordance with ANSI Y14		DO NOT SCALE DRAWING		TITLE: ASSEMBLY, A-4SC DRILL		ROUTING NO. LOCATION: A12600-00023		DRAWN BY: RJ		CHECKED BY: AEB		APPROVED BY: 08/28/2023		REV. LEVEL: A		A	
TOLERANCES		Dimension in accordance with ANSI Y14		DO NOT SCALE DRAWING		TITLE: ASSEMBLY, A-4SC DRILL		ROUTING NO. LOCATION: A12600-00023		DRAWN BY: RJ		CHECKED BY: AEB		APPROVED BY: 08/28/2023		REV. LEVEL: A		A	
TOLERANCES		Dimension in accordance with ANSI Y14		DO NOT SCALE DRAWING		TITLE: ASSEMBLY, A-4SC DRILL		ROUTING NO. LOCATION: A12600-00023		DRAWN BY: RJ		CHECKED BY: AEB		APPROVED BY: 08/28/2023		REV. LEVEL: A		A	
TOLERANCES		Dimension in accordance with ANSI Y14		DO NOT SCALE DRAWING		TITLE: ASSEMBLY, A-4SC DRILL		ROUTING NO. LOCATION: A12600-00023		DRAWN BY: RJ		CHECKED BY: AEB		APPROVED BY: 08/28/2023		REV. LEVEL: A		A	
TOLERANCES		Dimension in accordance with ANSI Y14		DO NOT SCALE DRAWING		TITLE: ASSEMBLY, A-4SC DRILL		ROUTING NO. LOCATION: A12600-00023		DRAWN BY: RJ		CHECKED BY: AEB		APPROVED BY: 08/28/2023		REV. LEVEL: A		A	
TOLERANCES		Dimension in accordance with ANSI Y14		DO NOT SCALE DRAWING		TITLE: ASSEMBLY, A-4SC DRILL		ROUTING NO. LOCATION: A12600-00023		DRAWN BY: RJ		CHECKED BY: AEB		APPROVED BY: 08/28/2023		REV. LEVEL: A		A	
TOLERANCES		Dimension in accordance with ANSI Y14		DO NOT SCALE DRAWING		TITLE: ASSEMBLY, A-4SC DRILL		ROUTING NO. LOCATION: A12600-00023		DRAWN BY: RJ		CHECKED BY: AEB		APPROVED BY: 08/28/2023		REV. LEVEL: A		A	
TOLERANCES		Dimension in accordance with ANSI Y14		DO NOT SCALE DRAWING		TITLE: ASSEMBLY, A-4SC DRILL		ROUTING NO. LOCATION: A12600-00023		DRAWN BY: RJ		CHECKED BY: AEB		APPROVED BY: 08/28/2023		REV. LEVEL: A		A	
TOLERANCES		Dimension in accordance with ANSI Y14		DO NOT SCALE DRAWING		TITLE: ASSEMBLY, A-4SC DRILL		ROUTING NO. LOCATION: A12600-00023		DRAWN BY: RJ		CHECKED BY: AEB		APPROVED BY: 08/28/2023		REV. LEVEL: A		A	
TOLERANCES		Dimension in accordance with ANSI Y14		DO NOT SCALE DRAWING		TITLE: ASSEMBLY, A-4SC DRILL		ROUTING NO. LOCATION: A12600-00023		DRAWN BY: RJ		CHECKED BY: AEB		APPROVED BY: 08/28/2023		REV. LEVEL: A		A	
TOLERANCES		Dimension in accordance with ANSI Y14		DO NOT SCALE DRAWING		TITLE: ASSEMBLY, A-4SC DRILL		ROUTING NO. LOCATION: A12600-00023		DRAWN BY: RJ		CHECKED BY: AEB		APPROVED BY: 08/28/2023		REV. LEVEL: A		A	
TOLERANCES		Dimension in accordance with ANSI Y14		DO NOT SCALE DRAWING		TITLE: ASSEMBLY, A-4SC DRILL		ROUTING NO. LOCATION: A12600-00023		DRAWN BY: RJ		CHECKED BY: AEB		APPROVED BY: 08/28/2023		REV. LEVEL: A		A	
TOLERANCES		Dimension in accordance with ANSI Y14		DO NOT SCALE DRAWING		TITLE: ASSEMBLY, A-4SC DRILL		ROUTING NO. LOCATION: A12600-00023		DRAWN BY: RJ		CHECKED BY: AEB		APPROVED BY: 08/28/2023		REV. LEVEL: A		A	
TOLERANCES		Dimension in accordance with ANSI Y14		DO NOT SCALE DRAWING		TITLE: ASSEMBLY, A-4SC DRILL		ROUTING NO. LOCATION: A12600-00023		DRAWN BY: RJ		CHECKED BY: AEB		APPROVED BY: 08/28/2023		REV. LEVEL: A		A	
TOLERANCES		Dimension in accordance with ANSI Y14		DO NOT SCALE DRAWING		TITLE: ASSEMBLY, A-4SC DRILL		ROUTING NO. LOCATION: A12600-00023		DRAWN BY: RJ		CHECKED BY: AEB		APPROVED BY: 08/28/2023		REV. LEVEL: A		A	
TOLERANCES		Dimension in accordance with ANSI Y14		DO NOT SCALE DRAWING		TITLE: ASSEMBLY, A-4SC DRILL		ROUTING NO. LOCATION: A12600-00023		DRAWN BY: RJ		CHECKED BY: AEB		APPROVED BY: 08/28/2023		REV. LEVEL: A		A	
TOLERANCES		Dimension in accordance with ANSI Y14		DO NOT SCALE DRAWING		TITLE: ASSEMBLY, A-4SC DRILL		ROUTING NO. LOCATION: A12600-00023		DRAWN BY: RJ		CHECKED BY: AEB		APPROVED BY: 08/28/2023		REV. LEVEL: A		A	
TOLERANCES		Dimension in accordance with ANSI Y14		DO NOT SCALE DRAWING		TITLE: ASSEMBLY, A-4SC DRILL		ROUTING NO. LOCATION: A12600-00023		DRAWN BY: RJ		CHECKED BY: AEB		APPROVED BY: 08/28/2023		REV. LEVEL: A		A	
TOLERANCES		Dimension in accordance with ANSI Y14		DO NOT SCALE DRAWING		TITLE: ASSEMBLY, A-4SC DRILL		ROUTING NO. LOCATION: A12600-00023		DRAWN BY: RJ		CHECKED BY: AEB		APPROVED BY: 08/28/2023		REV. LEVEL: A		A	
TOLERANCES		Dimension in accordance with ANSI Y14		DO NOT SCALE DRAWING		TITLE: ASSEMBLY, A-4SC DRILL		ROUTING NO. LOCATION: A12600-00023		DRAWN BY: RJ		CHECKED BY: AEB		APPROVED BY: 08/28/2023		REV. LEVEL: A		A	
TOLERANCES		Dimension in accordance with ANSI Y14		DO NOT SCALE DRAWING		TITLE: ASSEMBLY, A-4SC DRILL		ROUTING NO. LOCATION: A12600-00023		DRAWN BY: RJ		CHECKED BY: AEB		APPROVED BY: 08/28/2023		REV. LEVEL: A		A	
TOLERANCES		Dimension in accordance with ANSI Y14		DO NOT SCALE DRAWING		TITLE: ASSEMBLY, A-4SC DRILL		ROUTING NO. LOCATION: A12600-00023		DRAWN BY: RJ		CHECKED BY: AEB		APPROVED BY: 08/28/2023		REV. LEVEL: A		A	
TOLERANCES		Dimension in accordance with ANSI Y14		DO NOT SCALE DRAWING		TITLE: ASSEMBLY, A-4SC DRILL		ROUTING NO. LOCATION: A12600-00023		DRAWN BY: RJ		CHECKED BY: AEB		APPROVED BY: 08/28/2023		REV. LEVEL: A		A	
TOLERANCES		Dimension in accordance with ANSI Y14		DO NOT SCALE DRAWING		TITLE: ASSEMBLY, A-4SC DRILL		ROUTING NO. LOCATION: A12600-00023		DRAWN BY: RJ		CHECKED BY: AEB		APPROVED BY: 08/28/2023		REV. LEVEL: A		A	
TOLERANCES		Dimension in accordance with ANSI Y14		DO NOT SCALE DRAWING		TITLE: ASSEMBLY, A-4SC DRILL		ROUTING NO. LOCATION: A12600-00023		DRAWN BY: RJ		CHECKED BY: AEB		APPROVED BY: 08/28/2023		REV. LEVEL: A		A	
TOLERANCES		Dimension in accordance with ANSI Y14		DO NOT SCALE DRAWING		TITLE: ASSEMBLY, A-4SC DRILL		ROUTING NO. LOCATION: A12600-00023		DRAWN BY: RJ		CHECKED BY: AEB		APPROVED BY: 08/28/2023		REV. LEVEL: A		A	
TOLERANCES		Dimension in accordance with ANSI Y14		DO NOT SCALE DRAWING		TITLE: ASSEMBLY, A-4SC DRILL		ROUTING NO. LOCATION: A12600-00023		DRAWN BY: RJ		CHECKED BY: AEB		APPROVED BY: 08/28/2023		REV. LEVEL: A		A	
TOLERANCES		Dimension in accordance with ANSI Y14		DO NOT SCALE DRAWING		TITLE: ASSEMBLY, A-4SC DRILL		ROUTING NO. LOCATION: A12600-00023		DRAWN BY: RJ		CHECKED BY: AEB		APPROVED BY: 08/28/2023		REV. LEVEL: A		A	
TOLERANCES		Dimension in accordance with ANSI Y14		DO NOT SCALE DRAWING		TITLE: ASSEMBLY, A-4SC DRILL		ROUTING NO. LOCATION: A12600-00023		DRAWN BY: RJ		CHECKED BY: AEB		APPROVED BY: 08/28/2023		REV. LEVEL: A		A	
TOLERANCES		Dimension in accordance with ANSI Y14		DO NOT SCALE DRAWING		TITLE: ASSEMBLY, A-4SC DRILL		ROUTING NO. LOCATION: A12600-00023		DRAWN BY: RJ		CHECKED BY: AEB		APPROVED BY: 08/28/2023		REV. LEVEL: A		A	
TOLERANCES		Dimension in accordance with ANSI Y14		DO NOT SCALE DRAWING		TITLE: ASSEMBLY, A-4SC DRILL		ROUTING NO. LOCATION: A12600-00023		DRAWN BY: RJ		CHECKED BY: AEB		APPROVED BY: 08/28/2023		REV. LEVEL: A		A	
TOLERANCES		Dimension in accordance with ANSI Y14		DO NOT SCALE DRAWING		TITLE: ASSEMBLY, A-4SC DRILL		ROUTING NO. LOCATION: A12600-00023		DRAWN BY: RJ		CHECKED BY: AEB		APPROVED BY: 08/28/2023		REV. LEVEL: A		A	
TOLERANCES		Dimension in accordance with ANSI Y14		DO NOT SCALE DRAWING		TITLE: ASSEMBLY, A-4SC DRILL		ROUTING NO. LOCATION: A12600-00023		DRAWN BY: RJ		CHECKED BY: AEB		APPROVED BY: 08/28/2023		REV. LEVEL: A		A	
TOLERANCES		Dimension in accordance with ANSI Y14		DO NOT SCALE DRAWING		TITLE: ASSEMBLY, A-4SC DRILL		ROUTING NO. LOCATION: A12600-00023		DRAWN BY: RJ		CHECKED BY: AEB		APPROVED BY: 08/28/2023		REV. LEVEL: A		A	
TOLERANCES		Dimension in accordance with ANSI Y14		DO NOT SCALE DRAWING		TITLE: ASSEMBLY, A-4SC DRILL		ROUTING NO. LOCATION: A12600-00023		DRAWN BY: RJ		CHECKED BY: AEB		APPROVED BY: 08/28/2023		REV. LEVEL: A		A	
TOLERANCES		Dimension in accordance with ANSI Y14		DO NOT SCALE DRAWING		TITLE: ASSEMBLY, A-4SC DRILL		ROUTING NO. LOCATION: A12600-00023		DRAWN BY: RJ		CHECKED BY: AEB		APPROVED BY: 08/28/2023		REV. LEVEL: A		A	
TOLERANCES		Dimension in accordance with ANSI Y14		DO NOT SCALE DRAWING		TITLE: ASSEMBLY, A-4SC DRILL		ROUTING NO. LOCATION: A12600-00023		DRAWN BY: RJ		CHECKED BY: AEB		APPROVED BY: 08/28/2023		REV. LEVEL: A		A	
TOLERANCES		Dimension in accordance with ANSI Y14		DO NOT SCALE DRAWING		TITLE: ASSEMBLY, A-4SC DRILL		ROUTING NO. LOCATION: A12600-00023		DRAWN BY: RJ		CHECKED BY: AEB		APPROVED BY: 08/28/2023		REV. LEVEL: A		A	
TOLERANCES		Dimension in accordance with ANSI Y14		DO NOT SCALE DRAWING		TITLE: ASSEMBLY, A-4SC DRILL		ROUTING NO. LOCATION: A12600-00023		DRAWN BY: RJ		CHECKED BY: AEB		APPROVED BY: 08/28/2023		REV. LEVEL: A		A	
TOLERANCES		Dimension in accordance with ANSI Y14		DO NOT SCALE DRAWING		TITLE: ASSEMBLY, A-4SC DRILL		ROUTING NO. LOCATION: A12600-00023		DRAWN BY: RJ		CHECKED BY: AEB		APPROVED BY: 08/28/2023		REV. LEVEL: A		A	
TOLERANCES		Dimension in accordance with ANSI Y14		DO NOT SCALE DRAWING		TITLE: ASSEMBLY, A-4SC DRILL		ROUTING NO. LOCATION: A12600-00023		DRAWN BY: RJ		CHECKED BY: AEB		APPROVED BY: 08/28/2023		REV. LEVEL: A		A	
TOLERANCES		Dimension in accordance with ANSI Y14		DO NOT SCALE DRAWING		TITLE: ASSEMBLY, A-4SC DRILL		ROUTING NO. LOCATION: A12600-00023		DRAWN BY: RJ		CHECKED BY: AEB		APPROVED BY: 08/28/2023		REV. LEVEL: A		A	
TOLERANCES		Dimension in accordance with ANSI Y14		DO NOT SCALE DRAWING		TITLE: ASSEMBLY, A-4SC DRILL		ROUTING NO. LOCATION: A12600-00023		DRAWN BY: RJ		CHECKED BY: AEB		APPROVED BY: 08/28/2023		REV. LEVEL: A		A	
TOLERANCES		Dimension in accordance with ANSI Y14		DO NOT SCALE DRAWING		TITLE: ASSEMBLY, A-4SC DRILL		ROUTING NO. LOCATION: A12600-00023		DRAWN BY: RJ		CHECKED BY: AEB		APPROVED BY: 08/28/2023		REV. LEVEL: A		A	
TOLERANCES		Dimension in accordance with ANSI Y14		DO NOT SCALE DRAWING		TITLE: ASSEMBLY, A-4SC DRILL		ROUTING NO. LOCATION: A12600-00023		DRAWN BY: RJ		CHECKED BY: AEB		APPROVED BY: 08/28/2023		REV. LEVEL: A		A	
TOLERANCES		Dimension in accordance with ANSI Y14		DO NOT SCALE DRAWING		TITLE: ASSEMBLY, A-4SC DRILL		ROUTING NO. LOCATION: A12600-00023		DRAWN BY: RJ		CHECKED BY: AEB		APPROVED BY: 08/28/2023		REV. LEVEL: A		A	
TOLERANCES		Dimension in accordance with ANSI Y14		DO NOT SCALE DRAWING		TITLE: ASSEMBLY, A-4SC DRILL		ROUTING NO. LOCATION: A12600-00023		DRAWN BY: RJ		CHECKED BY: AEB		APPROVED BY: 08/28/2023		REV. LEVEL: A		A	
TOLERANCES		Dimension in accordance with ANSI Y14		DO NOT SCALE DRAWING		TITLE: ASSEMBLY, A-4SC DRILL		ROUTING NO. LOCATION: A12600-00023		DRAWN BY: RJ		CHECKED BY: AEB		APPROVED BY: 08/28/2023		REV. LEVEL: A		A	
TOLERANCES		Dimension in accordance with ANSI Y14		DO NOT SCALE DRAWING		TITLE: ASSEMBLY, A-4SC DRILL		ROUTING NO. LOCATION: A12600-00023		DRAWN BY: RJ		CHECKED BY: AEB		APPROVED BY: 08/28/2023		REV. LEVEL: A		A	
TOLERANCES		Dimension in accordance with ANSI Y14		DO NOT SCALE DRAWING		TITLE: ASSEMBLY, A-4SC DRILL		ROUTING NO. LOCATION: A12600-00023		DRAWN BY: RJ		CHECKED BY: AEB		APPROVED BY: 08/28/2023		REV. LEVEL: A			

REV. A

DESCRIPTION
REMOVED (1) A10020-00009, (1) A10021-00007, (1) A10022-00009, (1) A10080-00003, AND (1) 12682-00000; REPLACED WITH (1) A13688-00000

DATE
09/01/2023

APPROVED
RJ

ECR#
2023-00038

MINNICH

28

29

30

31

32

33

34

35

36

37

38

39

40

41

42

43

44

45

46

47

48

49

50

51

52

53

54

55

56

57

58

59

60

61

62

63

64

65

66

67

68

69

70

71

72

73

74

75

76

77

78

79

80

81

82

83

84

85

86

87

88

89

90

91

92

93

94

95

96

97

98

99

100

101

102

103

104

105

106

107

108

109

110

111

112

113

114

115

116

117

118

119

120

121

122

123

124

125

126

127

128

129

130

131

132

133

134

135

136

137

138

139

140

141

142

143

144

145

146

147

148

149

150

151

152

153

154

155

156

157

158

159

160

161

162

163

164

165

166

167

168

169

170

171

172

173

174

175

176

177

178

179

180

181

182

183

184

185

186

187

188

189

190

191

192

193

194

195

196

197

198

199

200

201

202

203

204

205

206

207

208

209

210

211

212

213

214

215

216

217

218

219

220

221

222

223

224

225

226

227

228

229

230

231

232

233

234

235

236

237

238

239

240

241

242

243

244

245

246

247

248

249

250

251

252

253

254

255

256

257

258

259

260

261

262

263

264

265

266

267

268

269

270

271

272

273

274

275

276

277

278

279

280

281

282

283

284

285

286

287

288

289

290

291

292

293

294

295

296

297

298

299

300

301

302

303

304

305

306

307

308

309

310

311

312

313

314

315

316

317

318

319

320

321

322

323

324

325

326

327

328

329

330

331

332

333

334

335

336

337

338

339

340

341

342

343

344

345

346

347

348

349

350

351

352

353

354

355

356

357

358

359

360

361

362

363

364

365

366

367

368

369

370

371

372

373

374

375

376

377

378

379

380

381

382

383

384

385

386

387

388

389

390

391

392

393

394

395

396

397

398

399

400

401

402

403

404

405

406

407

408

409

410

411

412

413

414

415

416

417

418

419

420

421

422

423

424

425

426

427

428

429

430

431

432

433

434

435

436

437

438

439

440

441

442

443

444

445

446

447

448

449

450

451

452

453

454

455

456

457

458

459

460

461

462

463

464

465

466

467

468

469

470

471

472

473

474

475

476

477

478

479

480

481

482

483

484

485

486

487

488

489

490

491

492

493

494

495

496

497

498

499

500

501

502

503

504

505

506

507

508

509

510

511

512

513

514

515

516

517

518

519

520

521

522

523

524

525

526

527

528

529

530

531

532

533

534

535

536

537

538

539

540

541

542

543

544

545

546

547

548

549

550

551

552

553

554

555

556

557

558

559

560

561

562

563

564

565

566

567

568

569

570

571

572

573

574

575

576

577

578

579

580

581

582

583

584

585

586

587

588

589

590

591

592

593

594

595

596

597

598

599

600

601

602

603

604

605

606

607

608

609

610

611

612

613

614

615

616

617

618

619

620

621

622

623

624

625

626

627

628

629

630

631

632

633

634

635

636

637

638

639

640

641

642

643

644

645

646

647

648

649

650

651

652

653

654

655

656

657

658

659

660

661

662

663

664

665

666

667

668

669

670

671

672

673

674

675

676

677

678

679

680

681

682

683

684

685

686

687

688

689

690

691

692

693

694

695

696

697

698

699

700

701

702

703

704

705

706

707

708

709

710

711

712

713

714

715

716

717

718

719

720

721

722

723

724

725

726

727

728

729

730

731

732

733

734

735

736

737

738

739

740

741

742

743

744

745

746

747

748

749

750

751

752

753

754

755

756

757

758

759

760

761

762

763

764

765

766

767

768

769

770

771

772

773

774

775

776

777

778

779

780

781

782

783

784

785

786

787

788

789

790

791

792

793

794

795

796

797

798

799

800

801

802

803

804

805

806

807

808

809

810

811

812

813

814

815

816

817

818

819

820

821

822

823

824

825

826

827

828

829

830

831

832

833

834

835

836

837

838

839

840

841

842

843

844

845

846

847

848

849

850

851

852

853

854

855

856

857

858

859

860

861

862

863

864

865

866

867

868

869

870

871

872

873

874

875

876

877

878

879

880

881

882

883

884

885

886

887

888

889

890

891

892

893

894

895

896

897

898

899

900

901

902

903

904

905

906

907

908

909

910

911

912

913

914

915

916

917

918

919

920

921

922

923

924

925

926

927

928

929

930

931

932

933

934

935

936

937

938

939

940

941

942

943

944

945

946

947

948

949

950

951

952

953

954

955

956

957

958

959

960

961

962

963

964

965

966

967

968

969

970

971

972

973

974

975

976

977

978

979

980

981

982

983

984

985

986

987

988

989

990

991

992

993

994

995

996

997

998

999

1000

#

MINNICH MFG. CO. INC.

DO NOT SCALE DRAWING

TITLE: ASSEMBLY, A-4SC DRILL

ROUTING NO. A12600-00023

REVISION: A

DATE: 08/28/2023

CHECKED BY:

APPROVED BY:

DRAWN BY:

REVISIONS

REV. A

DESCRIPTION

DATE

APPROVED

ECR#

MINNICH

28

29

30

31

32

33

34

35

36

37

38

39

40

41

42

43

44

45

46

47

48

49

50

51

52

53

54

55

56

57

58

59

60

61

62

63

64

65

66

67

68

69

70

71

72

73

74

75

76

77

78

79

80

81

82

83

84

85

86

87

88

89

90

91

92

93

94

95

96

97

98

99

100

101

102

103

104

105

106

107

108

109

110

111

112

113

114

115

116

117

118

119

120

121

122

123

124

125

126

127

128

129

130

131

132

133

134

135

136

137

138

139

140

141

142

143

144

145

146

147

148

149

150

151

152

153

154

155

156

157

158

159

160

161

162

163

164

165

166

167

168

169

170

171

172

173

174

175

176

177

178

179

180

181

182

183

184

185

186

187

188

189

190

191

192

193

194

195

196

197

198

199

200

201

202

203

204

205

206

207

208

209

210

211

212

213

214

215

216

217

218

219

220

221

222

223

224

225

226

227

228

229

230

231

232

233

234

235

236

237

238

239

240

241

242

243

244

245

246

247

248

249

250

251

252

253

254

255

256

257

258

259

260

261

262

263

264

265

266

267

268

269

270

271

272

273

274

275

276

277

278

279

280

281

282

283

284

285

286

287

288

289

290

291

292

293

294

295

296

297

298

299

300

301

302

303

304

305

306

307

308

309

310

311

312

313

314

315

316

317

318

319

320

321

322

323

324

325

326

327

328

329

330

331

332

333

334

335

336

337

338

339

340

341

342

343

344

345

346

347

348

349

350

351

352

353

354

355

356

357

358

359

360

361

362

363

364

365

366

367

368

369

370

371

372

373

374

375

376

377

378

379

380

381

382

383

384

385

386

387

388

389

390

391

392

393

394

395

396

397

398

399

400

401

402

403

404

405

406

407

408

409

410

411

412

413

414

415

416

417

418

419

420

421

422

423

424

425

426

427

428

429

430

431

432

433

434

435

436

437

438

439

440

441

442

443

444

445

446

447

448

449

450

451

452

453

454

455

456

457

458

459

460

461

462

463

464

465

466

467

468

469

470

471

472

473

474

475

476

477

478

479

480

481

482

483

484

485

486

487

488

489

490

491

492

493

494

495

496

497

498

499

500

501

502

503

504

505

506

507

508

509

510

511

512

513

514

515

516

517

518

519

520

521

522

523

524

525

526

527

528

529

530

531

532

533

534

535

536

537

538

539

540

541

542

543

544

545

546

547

548

549

550

551

552

553

554

555

556

557

558

559

560

561

562

563

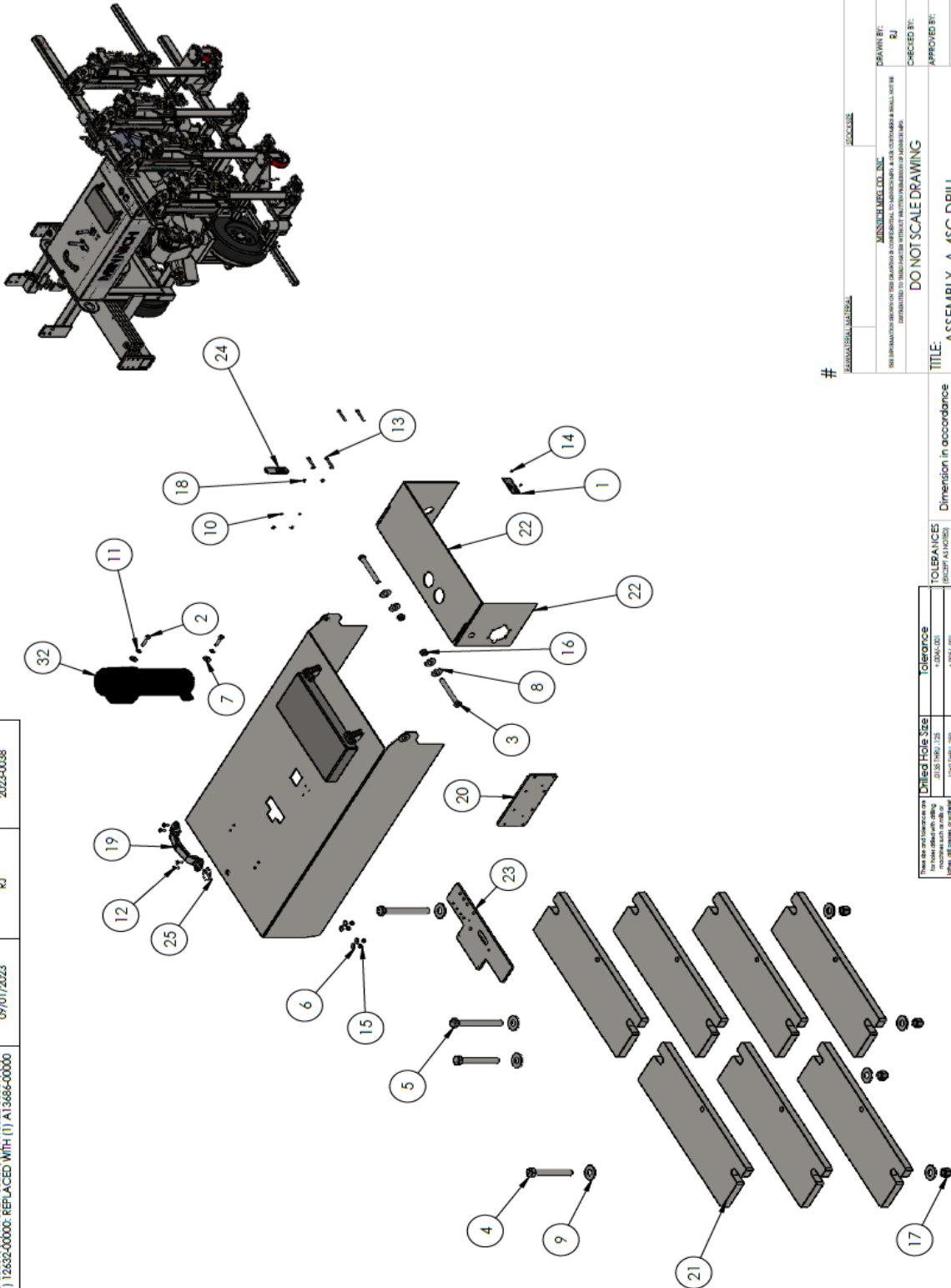
564

565

566

567</

REVISIONS				
REV.	DESCRIPTION	DATE	APPROVED	ECR#
A	REMOVED (1) A10020-00009, (1) A10021-00007, (1) A10022-00009, (1) A10023-00009, AND (1) 12032-00000. REPLACED WITH (1) A10020-00000	09/01/2023	RJ	2023-0038



TOLERANCES		Dimension in accordance with ANSI Y14	
DECIMAL FRACTIONS	INCHES	FRACTIONS	INCHES
XX	± .005	XX	± .005
XXI	± .003	XXI	± .003
XXII	± .001	XXII	± .001
XXIII	± .0005	XXIII	± .0005
XXIV	± .0002	XXIV	± .0002
XXV	± .0001	XXV	± .0001
XXVI	± .00005	XXVI	± .00005

Drilled Hole Size		Tolerance	
1/8"	± .001	1/8"	± .001
1/4"	± .001	1/4"	± .001
3/8"	± .001	3/8"	± .001
1/2"	± .001	1/2"	± .001
5/8"	± .001	5/8"	± .001
3/4"	± .001	3/4"	± .001
1"	± .001	1"	± .001
1 1/4"	± .001	1 1/4"	± .001
1 1/2"	± .001	1 1/2"	± .001
2"	± .001	2"	± .001

#

DATE: 09/01/2023

DESIGNED BY: RJ

CHECKED BY: RJ

APPROVED BY: RJ

DATE: 09/01/2023

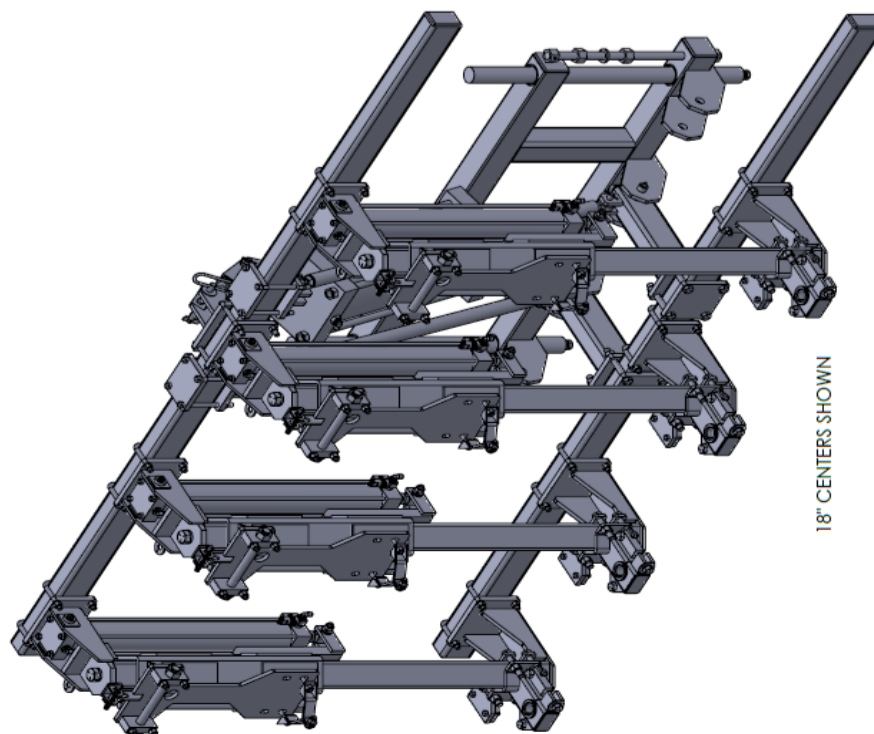
REV. LEVEL: A

DO NOT SCALE DRAWING

TITLE: ASSEMBLY, A-4SC DRILL

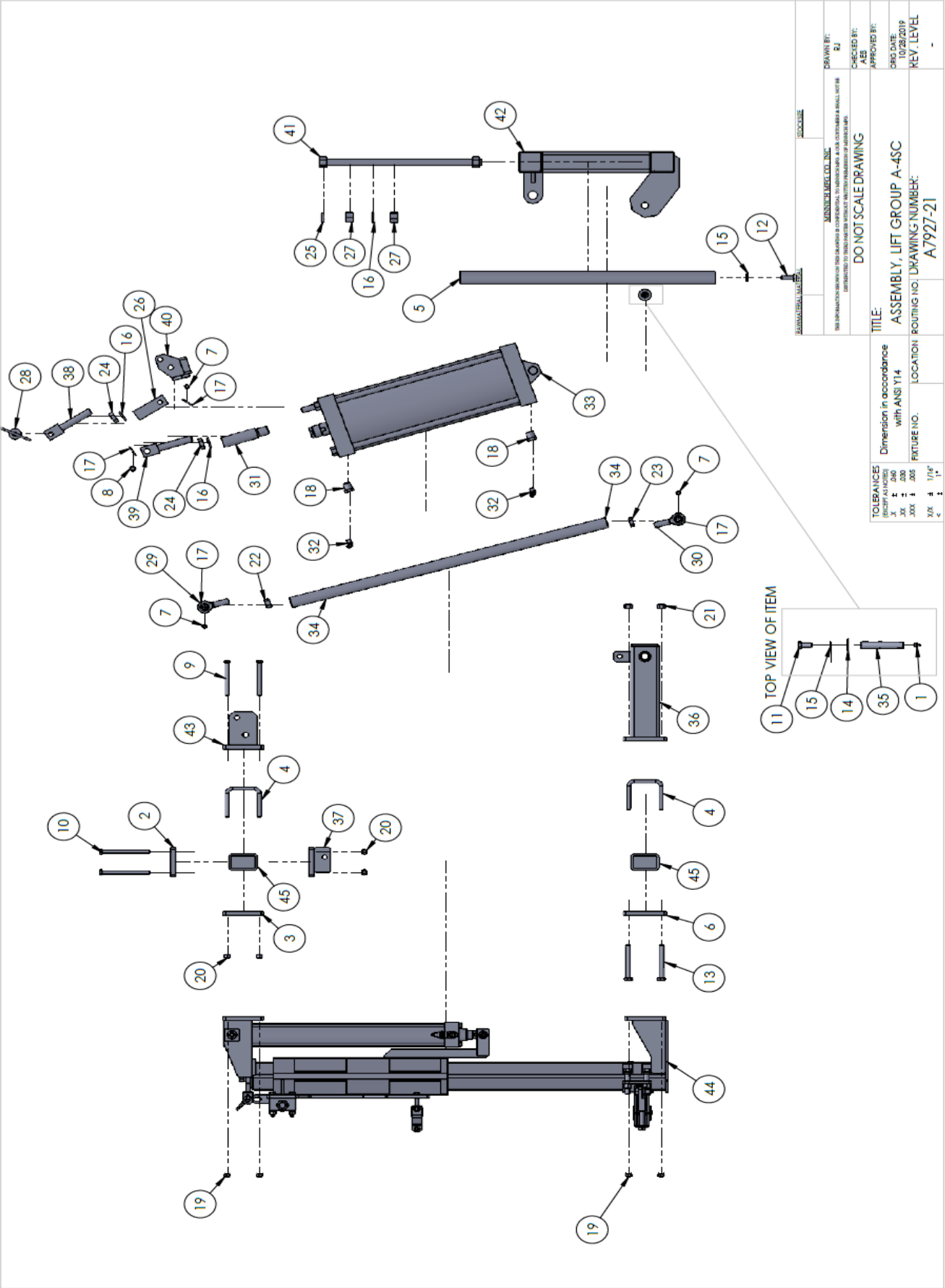
ROUTING NO. DRAWING NUMBER: A12600-00023

ITEM NO.	PART NUMBER	DESCRIPTION	QTY.
1	798	GREASE FITTING	2
2	4463	PLATE, MOUNTING	2
3	4463-30	PLATE RAIL MOUNT	1
4	4488	"U" BOLT	16
5	5685-2	HEIGHT ADJUSTMENT SHAFT	2
6	5691	MOUNTING PLATE	2
7	5775	PIN	5
8	5775-9	PIN	1
9	6038-4.00	HHCS, 3/8-16 X 4.00 GR.5	4
10	6038-5.00	HHCS, 3/8-16 X 5.00 GR.5	8
11	6040-1.00	HHCS, 1/2-13 X 1.00" GR.5	2
12	6040-1.25	HHCS, 1/2-13 X 1-1/4 GR.5	2
13	6040-4.00	HHCS, 1/2"-13 X 4.00"	8
14	6112	1/2 FLAT WASHER	2
15	6151	1/2" LOCK WASHER	4
16	006155-00000	3/4" LOCK WASHER	4
17	6174-1.00	COTTER PIN 1/8" X 1"	12
18	6296-2	BUSHING, REDUCER PIPE 08-04	2
19	6345	3/8"-24 LOCKNUT	32
20	6404	LOCKNUT 3/8"	12
21	6406	1/2-13 LOCK NUT	8
22	6469-7	5/8"-18 HEX NUT	2
23	6469-7-LH	NUT, HEX, 5/8"-18	2
24	6470-8	NUT, HEX JAM 3/4-10	2
25	6535-1.25	PIN, SPRING 1/4 X 1-1/4	2
26	6824-5	TIE ROD	1
27	7132-1	COATED NUT, COIL STYLE THREAD	4
28	7264	PIN, TENSION LOCK TOGGLE	1
29	7342-1	ROD, EYE RH	2
30	7343-1	ROD, EYE LH	2
31	8351-4	ANCHOR TUBE	1
32	10829-10	1/4 NPT PIPE	2
33	11992-16	7 in CYLINDER x 16in STROKE	1
34	13363-2	STAY ROD TUBE	2
35	A5542-1	HANGER PIN WELDMENT	2
36	A5692-16	WELDMENT, RAIL ROTATING ARM	2
37	A5938-1	ANCHOR WELDMENT	2
38	A5941-1	ADJUSTMENT SCREW WELDMENT	1
39	A5941-10	ADJ. SCREW WELDMENT	1
40	A7958-2	RETAINER BAR WELDMENT	1
41	A7960-1	ADJUSTMENT ROD WELDMENT	2
42	A9999-1	WELDMENT, LIFT ANCHOR ADAPTOR	1
43	A11738-2	WELDMENT, ANCHOR	1
44	A11744-28	DRILL RAIL ASSEMBLY	4
45	A11937-6	WELDMENT BEAM HANGER	2



8" CENTERS SHOWN

TOLERANCES ± .0005 .001 .002 .003 .004 .005 .006 .007 .008 .009 .010 .012 .015 .020 .025 .030 .035 .040 .045 .050 .060 .070 .080 .090 .100 .120 .150 .200 .250 .300 .350 .400 .450 .500 .600 .700 .800 .900 1.000 1.200 1.500 2.000 2.500 3.000 3.500 4.000 4.500 5.000 6.000 7.000 8.000 9.000 10.000 12.000 15.000 20.000 25.000 30.000 40.000 50.000 60.000 70.000 80.000 90.000 100.000 120.000 150.000 200.000 250.000 300.000 400.000 500.000 600.000 700.000 800.000 900.000 1000.000 1200.000 1500.000 2000.000 2500.000 3000.000 4000.000 5000.000 6000.000 7000.000 8000.000 9000.000 10000.000 12000.000 15000.000 20000.000 25000.000 30000.000 40000.000 50000.000 60000.000 70000.000 80000.000 90000.000 100000.000 120000.000 150000.000 200000.000 250000.000 300000.000 400000.000 500000.000 600000.000 700000.000 800000.000 900000.000 1000000.000 1200000.000 1500000.000 2000000.000 2500000.000 3000000.000 4000000.000 5000000.000 6000000.000 7000000.000 8000000.000 9000000.000 10000000.000 12000000.000 15000000.000 20000000.000 25000000.000 30000000.000 40000000.000 50000000.000 60000000.000 70000000.000 80000000.000 90000000.000 100000000.000 120000000.000 150000000.000 200000000.000 250000000.000 300000000.000 400000000.000 500000000.000 600000000.000 700000000.000 800000000.000 900000000.000 1000000000.000 1200000000.000 1500000000.000 2000000000.000 2500000000.000 3000000000.000 4000000000.000 5000000000.000 6000000000.000 7000000000.000 8000000000.000 9000000000.000 10000000000.000 12000000000.000 15000000000.000 20000000000.000 25000000000.000 30000000000.000 40000000000.000 50000000000.000 60000000000.000 70000000000.000 80000000000.000 90000000000.000 100000000000.000 120000000000.000 150000000000.000 200000000000.000 250000000000.000 300000000000.000 400000000000.000 500000000000.000 600000000000.000 700000000000.000 800000000000.000 900000000000.000 1000000000000.000 1200000000000.000 1500000000000.000 2000000000000.000 2500000000000.000 3000000000000.000 4000000000000.000 5000000000000.000 6000000000000.000 7000000000000.000 8000000000000.000 9000000000000.000 10000000000000.000 12000000000000.000 15000000000000.000 20000000000000.000 25000000000000.000 30000000000000.000 40000000000000.000 50000000000000.000 60000000000000.000 70000000000000.000 80000000000000.000 90000000000000.000 100000000000000.000 120000000000000.000 150000000000000.000 200000000000000.000 250000000000000.000 300000000000000.000 400000000000000.000 500000000000000.000 600000000000000.000 700000000000000.000 800000000000000.000 900000000000000.000 1000000000000000.000 1200000000000000.000 1500000000000000.000 2000000000000000.000 2500000000000000.000 3000000000000000.000 4000000000000000.000 5000000000000000.000 6000000000000000.000 7000000000000000.000 8000000000000000.000 9000000000000000.000 10000000000000000.000 12000000000000000.000 15000000000000000.000 20000000000000000.000 25000000000000000.000 30000000000000000.000 40000000000000000.000 50000000000000000.000 60000000000000000.000 70000000000000000.000 80000000000000000.000 90000000000000000.000 100000000000000000.000 120000000000000000.000 1500000000
--



REV.	DESCRIPTION	DATE	APPROVED

ITEM NO.	PART NUMBER	DESCRIPTION	QTY.
1	004242-00001	SPRING BUSHING	2
2	004242-00002	SPRING BUSHING	1
3	004988-00006	CYLINDER END	1
4	006037-1.250	5/16"-18 X 1-1/4" GRADE 5 H.H.C.S.	2
5	006038-1.000	3/8"-16 X 1.00" GRADE 5 H.H.C.S.	1
6	006038-2.500	3/8"-16 X 2-1/2" GRADE 5 H.H.C.S.	2
7	006038-2.750	3/8"-16 X 2-3/4" GRADE 5 H.H.C.S.	4
8	006043-2.000	3/4"-10 X 2.00" GRADE 5 H.H.C.S.	1
9	006106-00000	FLAT WASHER, 5/16 USS	2
10	006110-00000	FLAT WASHER, 7/16 USS	4
11	006117-00000	FLAT WASHER, 3/4 SAE	1
12	006149-00000	LOCKWASHER, 3/8	8
13	006155-00000	LOCKWASHER, 3/4	2
14	006296-00001	06-04 REDUCER PIPE BUSHING	1
15	006403-00000	5/16"-18 NYLOK LOCKNUT	2
16	006404-00000	3/8"-16 NYLOCK LOCKNUT	7
17	007132-00001	COIL STYLE THREAD NUT	2
18	007282-00000	#12 SINGLE JACK CHAIN X 7.50"	7.50"
19	007667-8.000	3/4"-16 X 8.00" GRADE 8 BOLT	1
20	008419-00001	STOP PAD	1
21	008479-00000	TAB LOCK PIN	1
22	010066-00003	DRILL HANDLE BRACKET	2
23	010829-00010	MALE ELBOW - 1/4" TUBE TO MALE 1/4" NPT FITTING	1
24	010829-00011	MALE ELBOW - 1/4" TUBE TO MALE 3/8" NPT FITTING	1
25	011472-00050	SOCKET HEAD SHOULDER BOLT M10	1
26	011497-00000	LOCKNUT M10	1
27	011739-00000	DRILL CARRIER BEARING	8
28	011740-00020	2.50" X 20.00" STROKE CYLINDER	1
29	012300-00000	3/4"-16 TORQUE LOCKNUT	1
30	013261-00000	AIR POSITION SENSOR	1
31	013262-00000	AIR POSITION SENSOR	1
32	0A8399-00038	WELDMENT, DRILL CARRIER (20") TOYO/TOKU	1
33	0A8422-00001	WELDMENT, ADJUSTING BOLT	1
34	0A9383-00000	WELDMENT, FRONT MOUNTING CLAMP	2
35	0A9754-00000	WELDMENT, STOP	1
36	0A9776-00019	ASSEMBLY, DRILL SUPPORT	1
37	A11291-00000	WELDMENT, RAIL TUBE (FOR 18" HOLES)	1
38	A11732-00000	WELDMENT, RAIL END	1

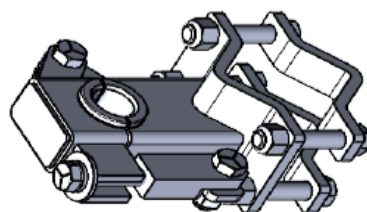
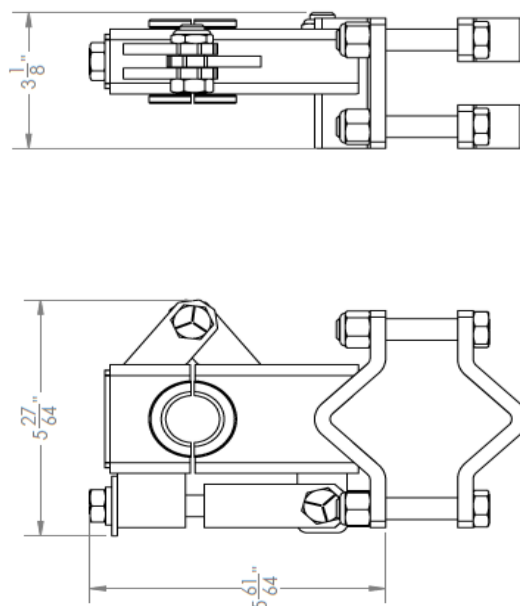
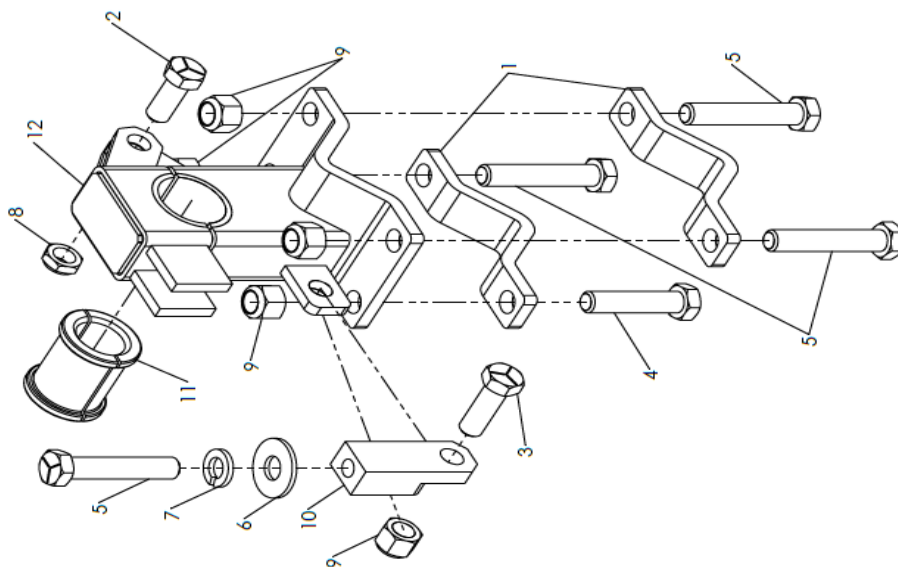
#

RAW MATERIAL MATERIAL	WELDMENT
MATERIALS CODE, INC.	
NO INFORMATION BEING ON THIS DRAWING IS CONSIDERED A MAJOR CUSTOMER A SMALL NEW ITEM	
EXEMPTED TO THIS PART NUMBER IN THE INSTRUCTIONS OF PARTS	
DO NOT SCALE DRAWING	
TITLE:	ASSEMBLY, DRILL RAIL
Dimension in accordance with ANSI Y14	
ROUTING NO.	LOCATION
FIXTURE NO.	
DRAWING NUMBER:	A11744-00028
REV. LEVEL	

Unified Hole Size	Tolerance
1/16" - 1/8"	+0.001/-0.001
9/32" - 1/2"	+0.002/-0.001
5/8" - 3/4"	+0.003/-0.001
7/8" - 1"	+0.004/-0.001
1 1/8" - 1 1/2"	+0.005/-0.001
1 3/4" - 2"	+0.006/-0.001
2 1/4" - 3"	+0.008/-0.001
3 1/2" - 4"	+0.010/-0.001
4 1/2" - 6"	+0.012/-0.001
6" - 8"	+0.015/-0.001
8" - 10"	+0.018/-0.001
10" - 12"	+0.020/-0.001
12" - 14"	+0.022/-0.001
14" - 16"	+0.025/-0.001
16" - 18"	+0.028/-0.001
18" - 20"	+0.030/-0.001
20" - 22"	+0.032/-0.001
22" - 24"	+0.035/-0.001
24" - 26"	+0.038/-0.001
26" - 28"	+0.040/-0.001
28" - 30"	+0.042/-0.001
30" - 32"	+0.045/-0.001
32" - 34"	+0.048/-0.001
34" - 36"	+0.050/-0.001
36" - 38"	+0.052/-0.001
38" - 40"	+0.055/-0.001
40" - 42"	+0.058/-0.001
42" - 44"	+0.060/-0.001
44" - 46"	+0.062/-0.001
46" - 48"	+0.065/-0.001
48" - 50"	+0.068/-0.001
50" - 52"	+0.070/-0.001
52" - 54"	+0.072/-0.001
54" - 56"	+0.075/-0.001
56" - 58"	+0.078/-0.001
58" - 60"	+0.080/-0.001
60" - 62"	+0.082/-0.001
62" - 64"	+0.085/-0.001
64" - 66"	+0.088/-0.001
66" - 68"	+0.090/-0.001
68" - 70"	+0.092/-0.001
70" - 72"	+0.095/-0.001
72" - 74"	+0.098/-0.001
74" - 76"	+0.100/-0.001
76" - 78"	+0.102/-0.001
78" - 80"	+0.105/-0.001
80" - 82"	+0.108/-0.001
82" - 84"	+0.110/-0.001
84" - 86"	+0.112/-0.001
86" - 88"	+0.115/-0.001
88" - 90"	+0.118/-0.001
90" - 92"	+0.120/-0.001
92" - 94"	+0.122/-0.001
94" - 96"	+0.125/-0.001
96" - 98"	+0.128/-0.001
98" - 100"	+0.130/-0.001

REVISIONS					QTY.
REV.	DESCRIPTION	DATE	APPROVED	ECR#	
A	REMOVED (1) 006040-1.500 AND (1) 006406-00000; ADDED (1) 006040-1.250 AND (1) 006392-00000	09/30/2021	RJ	-	2

ITEM NO.	PART NUMBER	DESCRIPTION	QTY.
1	002844-00000	HEIGHT ADJUSTMENT CLAMP	2
2	006040-1.250	HHCS, 1/2-13 x 1-1/4 GR.5	1
3	006040-1.500	HHCS, 1/2-13 x 1-1/2 GR.5	1
4	006040-2.250	HHCS, 1/2-13 x 2-1/4 GR.5	1
5	006040-2.750	HHCS, 1/2-13 x 2-3/4 GR.5	4
6	006112-00000	FLAT WASHER, 1/2 USS	1
7	006151-00000	LOCKWASHER, 1/2	1
8	006392-00000	1/2"-13 NYLOK NTE LOCKNUT	1
9	006406-00000	1/2"-13 LOCKNUT	5
10	008412-00001	RETAINER	1
11	008433-00000	1.085" DRILL SUPPORT BEARING	1
12	0A9824-00009	WELDMENT, DRILL ROD SUPPORT	1



0A8458-00000 KIT CONSISTS OF THE FOLLOWING WITH *

- *008433-00000 SPLIT BEARING - USED FOR ALL BITS 1-1/8" (28.6MM) & LARGER
 *008433-00001 SPLIT BEARING - USED FOR ALL 1" (25.4MM) & 1-1/16" (17.0MM) BITS
 *008433-00002 SPLIT BEARING - USED FOR ALL 7/8" (22.2MM) DIA. BITS
 *008433-00003 SPLIT BEARING - USED FOR ALL 3/4" (19.1MM) DIA. BITS
 *008433-00004 SPLIT BEARING - USED FOR ALL 5/8" (15.9MM) DIA. BITS
 *008433-00005 SPLIT BEARING - USED FOR ALL 1" (25.4MM) HEX STEEL BITS

These are the tolerances are for holes drilled with drilling machines such as mill or lathe, or pressure, or wet-grit operation. The following are tolerances for general purpose machine work and apply in all cases except where greater or lesser accuracy is required by	Dried Hole Size	Tolerance
	.0150 to .0160	±.0004-.001
	.0160 to .0180	±.0005-.001
	.0180 to .0200	±.0006-.001
	.0200 to .0250	±.0008-.001
	.0250 to .0300	±.0010-.001
	.0300 to .0360	±.0012-.001

TOLERANCES (EXCEPT AS NOTED)	
X	± .060
XX	± .030
XXX	± .005
X/X	± 1/16"

Dimension in accordance with ANSI Y14	FIXTURE NO.	LOCATION
---------------------------------------	-------------	----------

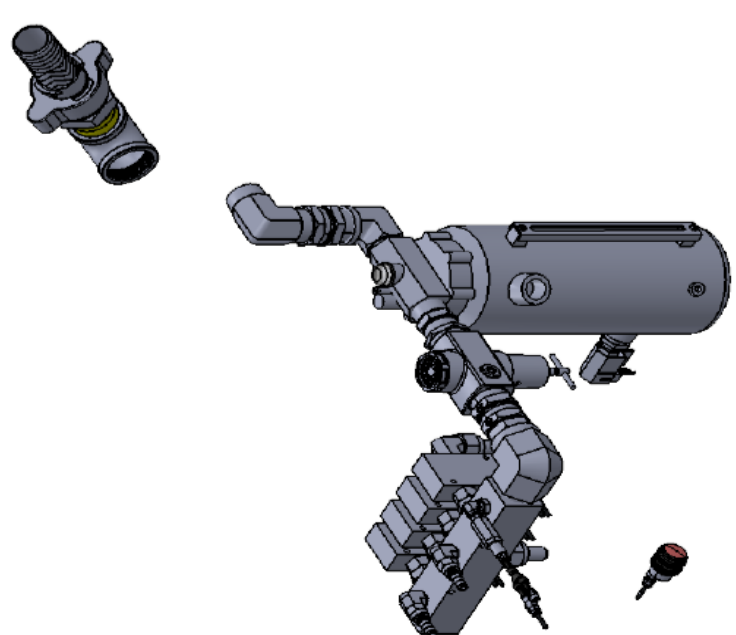
TITLE:	ASSEN
ROUTING NO.	DR

DRAWING NUMBER: 0A9776-00019

REPORT

APPROVED BY:	ORIG DATE:	REV. LEVEL	A
--------------	------------	------------	---

ITEM NO.	PART NUMBER	DESCRIPTION	QTY.
1	4955	IN-LINE FILTER	1
2	6000-61	NIPPLE, PIPE 2 CLOSE SCH 40	1
3	6007-23	3/4" NPT FLARED PIPE	5
4	6016-1	ELBOW, 90 DEG 02-02	1
5	6016-15	90 DEG. ELBOW	1
6	6016-16	ELBOW - 90DEG. EXT. PIPE/INT. PIPE	1
7	6019-17	ELBOW, 90 DEG EXT PIPE/37 DEG 08-08	2
8	6019-19	90 DEG. ELBOW - EXT. PIPE / 37 DEG.	4
9	6032-2	END, HOSE 37 DEG FEM SWIV / BARBED 08	2
10	6032-6	END HOSE 37 DEG. SWIV/BARDED 12	9
11	6296-2	BUSHING, REDUCER PIPE 08-04	1
12	6296-15	BUSHING, REDUCER PIPE 06-02	1
13	6296-17	BUSHING, REDUCER PIPE 24-20	1
14	6379-9	ELBOW, 90 DEG. PIPE MI 2 BLK	1
15	6385-1	COUPLER, PIPE 1/8 BLK SCH 40 STL	1
16	6466-1	NIPPLE, PIPE STEEL 02-02	1
17	6466-14	NIPPLE, PIPE STEEL 20-20	1
18	6466-15	NIPPLE, PIPE STEEL 24-24	1
19	6471-2	PLUG, PIPE HEX SOC 1/4	2
20	6471-3	PLUG, PIPE HEX SOC 3/8	1
21	6471-4	PLUG, PIPE HEX SOC 1/2	4
22	6471-5	PLUG, PIPE HEX SOC 3/4	1
23	6471-7	PLUG, PIPE HEX SOC 1-1/4	1
24	7612-5	MANIFOLD	1
25	8988	GROUND JOINT SEAL COUPLING	1
26	10825-3	FITTING, 5/32 TUBE TO MALE 1/8 NPT	2
27	10825-7	FITTING, 1/4 TUBE TO 1/8 MALE NPT	2
28	10829-5	FITTING, MALE ELBOW 5/32 TUBE TO 1/8" MALE NPT	4
29	10836-6	TUBE TO NPT CONNECTOR	1
30	10842-1	FITTING, 5/32 Y-TUBE TO TUBE	4
31	10842-2	FITTING, 1/4 Y-TUBE TO TUBE	1
32	10861	TUBING, NYLON 5/32 BLACK SEMI-RIDGE	2,592"
33	10863	TUBING, NYLON 1/4 BLACK SEMI-RIGID	1,540"
34	10872-1	1/2" EXPANDABLE SLEEVING	620"
35	11163-9	SWIVEL NUT ADAPTER	4
36	11703	AIR REGULATOR	1
37	12598-14	MALE PIPE ELBOW	1
38	12599-21	FEMALE PIPE SWIVELS	1
39	12599-24	FEMALE PIPE SWIVELS	1
40	13265	VALVE	4
41	13594	HORIZONTAL FLOAT VALVE	1
42	13595	VISUAL PRESSURE INDICATOR	1
43	A7350-12	LUBRICATOR WELDMENT	1



DO NOT SCALE DRAWING

TOLERANCES
X .000
XX .005
XXX .010
X/8 ± 1/16"
X/4 ± 1/8"
X/2 ± 1/4"

Dimension in accordance with ANSI Y14

ROUTING NO. LOCATION

TITLE:
DRILL MANIFOLD ASSEMBLY A-45C

ROUTING NO. DRAWING NUMBER:
A12592-4

REVISIONS
REV. LEVEL

DATE
01/31/2020

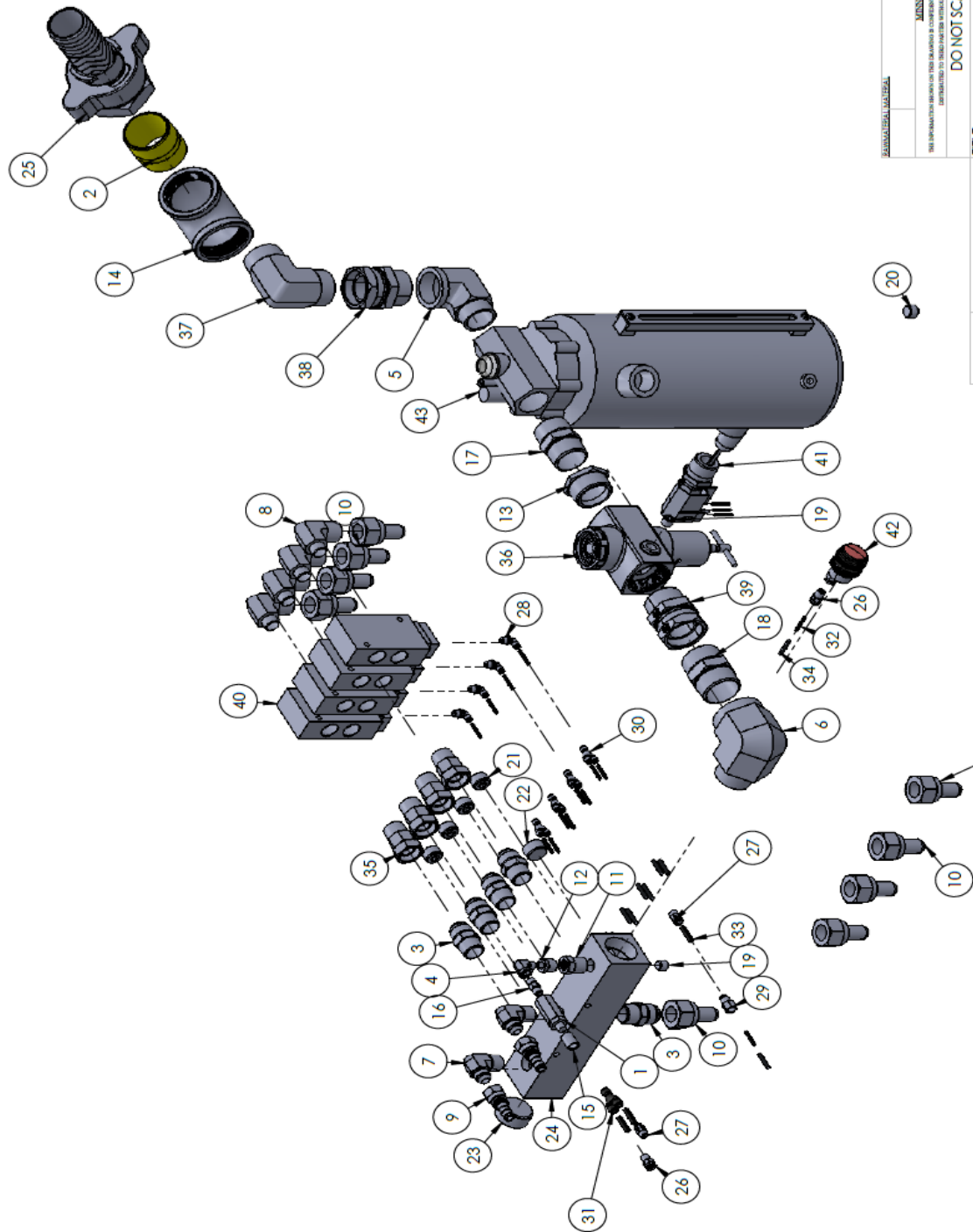
APPROVED BY:
RJ

CHECKED BY:
RJ

DESIGNED BY:
RJ

MANUFACTURED BY:
MANUSCRIPT CO., INC.

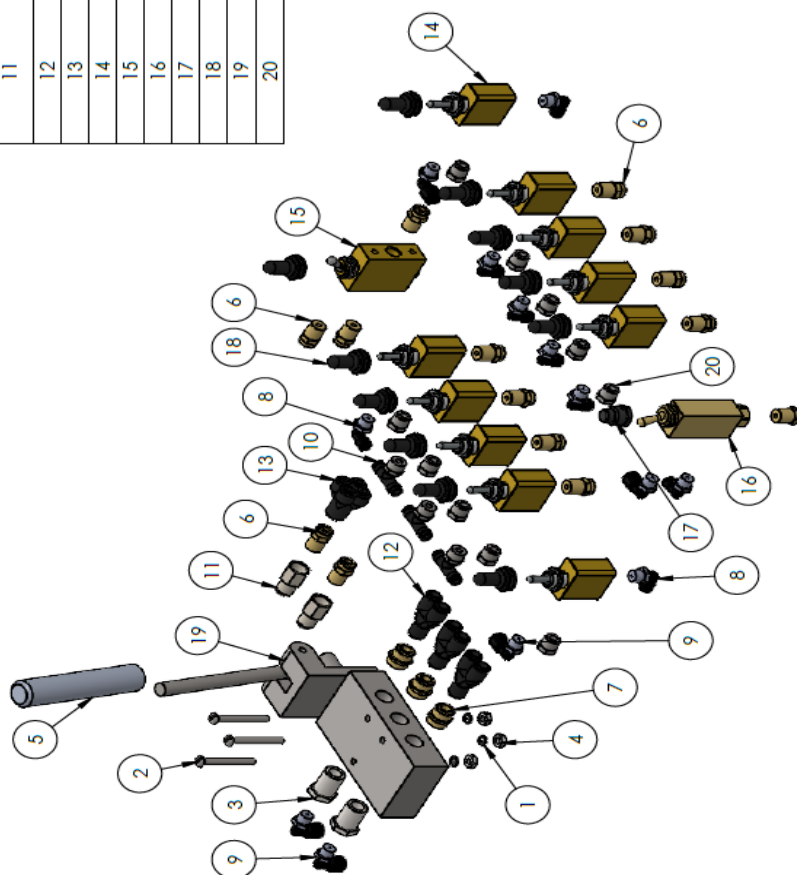
REVISIONS
THIS INFORMATION IS FOR THE MANUFACTURER'S USE ONLY. IT IS NOT TO BE USED FOR THE PURPOSE OF REPAIR OR MAINTENANCE OF ANY EQUIPMENT.

[illegible]

REVISIONS				
REV.	DESCRIPTION	DATE	APPROVED	ECR#

ITEM NO.	PART NUMBER	DESCRIPTION	QTY.
1	006144-00000	LOCKWASHER, #8	3
2	006256-1.500	RHMS, #8-32 X 1-1/2 SLOTTED	3
3	006296-00016	BUSHING, REDUCER PIPE 04-02	2
4	006653-00000	NUT, HEX #8-32 NC THREAD	3
5	010300-00000	VALVE LEVER EXTENSION	1
6	010825-00003	5/32" TUBE TO MALE 1/8" NPT FITTING	14
7	010825-00008	1/4" TUBE TO MALE 1/4" NPT FITTING	3
8	010829-00005	MALE ELBOW - 5/32" TUBE TO MALE 1/8" NPT FITTING	8
9	010829-00009	MALE ELBOW - 1/4" TUBE TO MALE 1/8" NPT FITTING	5
10	010831-00004	MALE BRANCH TEE FITTING - 5/32" TUBE TO MALE 1/8" NPT TO 5/32" TUBE	3
11	010836-00006	STRAIGHT FEMALE CONNECTOR - 1/4" TUBE TO 1/8" NPT FITTING	2
12	010842-00002	1/4" TUBE TO 1/4" TUBE "Y" FITTING	3
13	010843-00001	5/32" TO 5/32" DOUBLE "Y" FITTING	1
14	010917-00000	2 POSITION VALVE TOGGLE	10
15	010921-00000	MAIN FEED SWITCH	1
16	010923-00000	LIMIT VALVE FEED & DRILL	1
17	010923-00001	LIMIT VALVE BUTTON	1
18	011198-00000	TOGGLE SWITCH COVER	11
19	011525-00000	CRAB & STEER AIR VALVE	1
20	012135-00000	1/8" BREATHER VENT	10

The diagram shows an exploded view of a mechanical assembly. The components are numbered as follows: 2 (small pin), 3 (long pin), 5 (cylindrical part), 6 (small pin), 9 (small pin), 11 (small pin), 13 (small pin), 18 (small pin), 19 (long pin), and 20 (small pin). The assembly appears to be a valve or actuator mechanism.



Feed rate and tolerances are	Drilled Hole Size	Tolerance
For holes drilled with drilling machine such as mill or lathe	.0150 (.0040) .125	± .0004 (-.001)
For holes drilled with drilling machine, drill press, or waterjet operations. The following are general tolerances for all sizes of holes.	.1250 (.0040) .250	± .0005 (-.001)
	.2510 (.0040) .500	± .0004 (-.001)
For holes drilled with gun drill, apply all of above except when greater or lesser accuracy is required by	.2510 (.0040) .750	± .0005 (-.001)
	.7510 (.0040) 1.000	± .0005 (-.001)

TOLERANCES (EXCEPT AS NOTED)	
X	± .060
XX	± .030
XXX	± .005
XX/X	± 1/16"

Dimension in accordance with ANSI Y14	FEATURE NO.	LOCATION
---------------------------------------	-------------	----------

ASSEMBLY MATERIAL	DO NOT SCALE	DRAWN BY: RJ
THIS DRAWING IS SUBJECT TO THE TERMS AND CONDITIONS OF THE PURCHASE ORDER AND SHALL NOT BE REPRODUCED OR TRANSMITTED IN ANY FORM OR BY ANY MEANS, ELECTRONIC OR MECHANICAL, INCLUDING PHOTOCOPYING, RECORDING, OR BY ANY INFORMATION STORAGE AND RETRIEVAL SYSTEM.		
DO NOT SCALE DRAWING		
CHECKED BY: ALES		
APPROVED BY:		
CRG DATE: 08/30/2023		
REV LEVEL		
ROUTING NO. DRAWING NUMBER: A12593-00003		
TITLE: ASSEMBLY, A-45C MULTI FUNCTION CONTROL		

ITEM NO.	PART NUMBER	DESCRIPTION	QTY.
1	01807-00000	3/8" AIR HOSE X 220.00"	220"
2	002304-00000	1/2" I.D. GENERAL PURPOSE HOSE X 180.00"	180"
3	002880-00000	AIR REGULATOR	1
4	004955-00003	FILTER	1
5	006007-00012	6-6S 37 DEG. MALE PIPE CONNECTOR	1
6	006007-00016	8-6S 37 DEG. MALE PIPE CONNECTOR	1
7	006007-00017	8-8S 37 DEG. MALE PIPE CONNECTOR	1
8	006010-00006	06-08 PIPE/BARBED BRASS MALE HOSE END	3
9	006015-00004	8-8S INTERNAL PIPE TEE	1
10	006019-00011	06-06 90 DEG EXT PIPE/ 37 DEG ELBOW	1
11	006019-00012	06-08 90 DEG EXT PIPE/ 37 DEG ELBOW	2
12	006032-00002	08 37° FEM/SWIVEL BARBED HOSE END	3
13	006032-00005	06 37° FEM/SWIVEL BARBED HOSE END	3
14	006257-0.750	RHMS, #10-24 X 3/4 SLOTTED	4
15	006296-00001	06-04 REDUCER PIPE BUSHING	1
16	006296-00002	08-04 REDUCER PIPE BUSHING	1
17	006296-00015	06-02 REDUCER PIPE BUSHING	2
18	006471-00003	3/8" HEX SOCKET PIPE PLUG	1
19	007059-00000	0-1.60 PSI AIR PRESSURE GAUGE	1
20	007059-00001	0-60 PSI AIR PRESSURE GAUGE	1
21	010825-00008	1/4" TUBE TO MALE 1/4" NPT FITTING	11
22	010829-00005	MALE ELBOW - 5/32" TUBE TO MALE 1/8" NPT FITTING	5
23	010829-00009	MALE ELBOW - 1/4" TUBE TO MALE 1/8" NPT FITTING	1
24	010829-00010	MALE ELBOW - 1/4" TUBE TO MALE 1/4" NPT FITTING	2
25	010836-00007	STRAIGHT FEMALE CONNECTOR - 1/4" TUBE TO 1/4" NPT FITTING	2
26	010839-00001	5/32" TUBE TO 5/32" TUBE UNION FITTING	2
27	010842-00001	5/32" TUBE TO 5/32" TUBE "Y" FITTING	5
28	010842-00002	1/4" TUBE TO 1/4" TUBE "Y" FITTING	5
29	010843-00000	5/32" TO 1/4" DOUBLE "Y" FITTING	1
30	010861-00000	5/32" NYLON TUBING X 280.00"	2,592"
31	010863-00000	1/4" NYLON TUBING X 1,316.00"	1,540"
32	010872-00001	1/2" EXPANDABLE SLEEVE X 504.00"	620"
33	011531-00000	SIX STATION MANIFOLD	1
34	011532-00000	BLANK STATION COVER	1
35	011549-00000	PILOTED AIR VALVE	5
36	011700-00000	BLOCKING PLUG	3

The diagram shows an exploded view of the A-4SC Feed Manifold assembly. Components are numbered 1 through 36. Key parts include hoses (1, 2), gauges (19, 20), filters (4), connectors (5, 6, 7, 8, 9, 10, 11, 12, 13, 14, 15, 16, 17, 18, 21, 22, 23, 24, 25, 26, 27, 28, 29, 30, 31, 32, 33, 34, 35, 36), and the main manifold body (3). A note indicates 'GOES TO BOTTOM FRAME INLET' pointing to component 30.

TOLERANCES
(UNLESS OTHERWISE SPECIFIED)
FRACTIONS DECIMALS
XX ± .005 XX ± .005
X/X ± .005 X/X ± .005

DIMENSIONS
(UNLESS OTHERWISE SPECIFIED)
INCHES MILLIMETERS
XX ± .005 XX ± .005
X/X ± .005 X/X ± .005

DO NOT SCALE DRAWING

REVISIONS

REV.	DESCRIPTION	DATE	APPROVED	ECR#

MANUFACTURING MATERIAL

MANUFACTURER'S NAME: MANNESMANN LAMP CO., INC.
ADDRESS: 1000 W. 10TH AVENUE, SUITE 100, DENVER, CO 80202
PHONE: (303) 733-1111
FAX: (303) 733-1112
E-MAIL: SALES@MANNESMANN.COM
WEBSITE: WWW.MANNESMANN.COM

DATE: 08/20/2023
REV. LEVEL: 1

ROUTING NO.: A12594-00005
LOCATION: 1

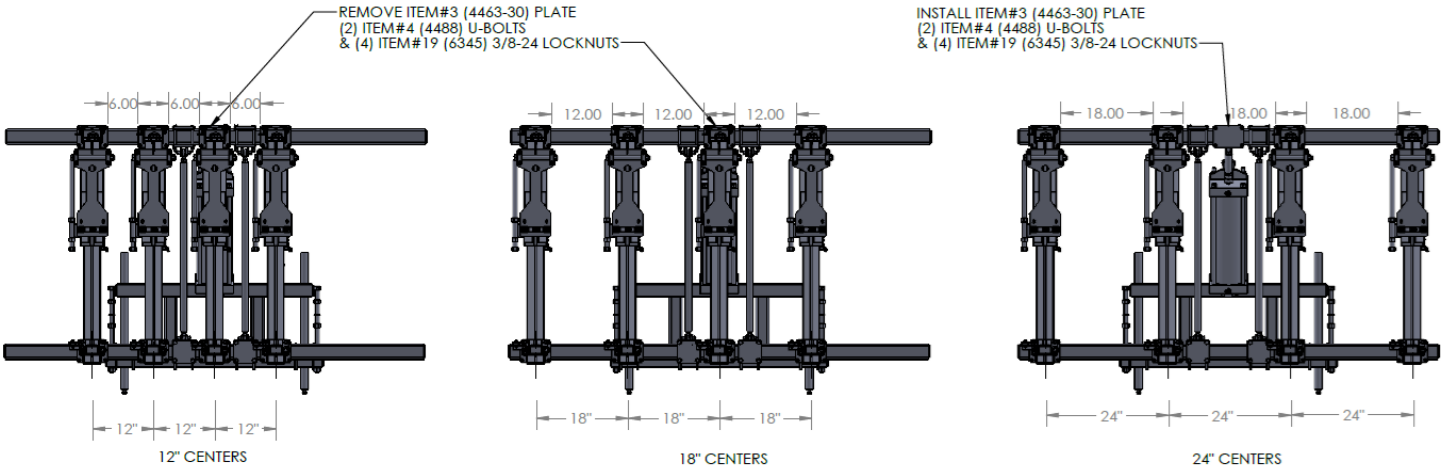
REVISIONS			
REV.	DESCRIPTION	DATE	APPROVED
			ECR#
ITEM NO.	PART NUMBER	DESCRIPTION	
1	003997-00000	3/4" I.D. X 310.00" HOSE	
2	006007-00017	8-8S 37 DEG. MALE PIPE CONNECTOR	
3	006007-00023	12-12S 37 DEG. MALE PIPE CONNECTOR	
4	006007-00025	16-12S 37 DEG. MALE PIPE CONNECTOR	
5	006010-00009	END. HOSE MALE PIPE/BARBED BR 12-12	
6	006023-00008	12-12S 37 DEG. MALE/FEMALE SWIVEL 90 DEG. ELBOW	
7	006024-00007	12-12S 37 DEG. SWIVEL RUN TEE	
8	006032-00002	08 37° FEM/SWIVEL BARBED HOSE END	
9	006032-00006	12 37° FEM/SWIVEL BARBED HOSE	
10	006037-3.000	5/16"-18 X 3.00" GRADE 5 H.H.C.S.	
11	006403-00000	5/16"-18 NYLOK LOCKNUT	
12	010300-00003	VALVE LEVER EXTENSION	
13	011526-00000	AIR VALVE	

CONNECTS TO A10022-00009 REAR DRIVE ASSEMBLY

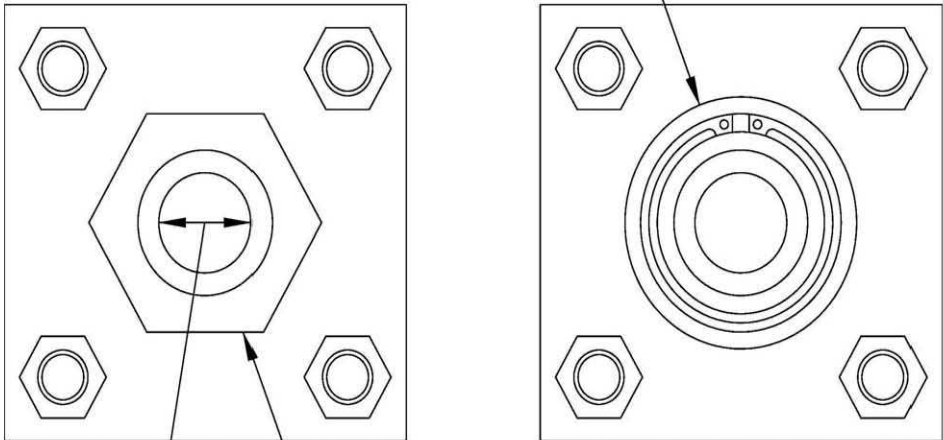
CONNECTS TO A10020-00009 DRIVE ASSEMBLY

CONNECTS TO A10021-00007 DRIVE ASSEMBLY

RAIL SPACING GUIDELINES



Obsolete Style Cylinder: Bushing held in place by snap ring. Service parts no longer available.



Rod Diameter

Current Style Cylinder: Bushing threaded in place. Service parts listed below.

OVERSIZE ROD CYLINDERS (FEED)

STANDARD ROD CYLINDERS

ROD DIAMETER	SERVICE KIT PART #	ROD DIAMETER	
1.50" (3.81 cm) Bore		5/8" (1.59 cm)	A12899-1.500
2.50" (6.35 cm) Bore	1" (2.54 cm) A12895-2.500	5/8" (1.59 cm)	A12899-2.500
3.25" (8.26 cm) Bore	1 3/8" (3.49 cm) A12895.3.250	1" (2.54 cm)	A12899-3.250
4.00" (10.16 cm) Bore		1" (2.54 cm)	A12899-4.000
5.00" (12.70 cm) Bore		1" (2.54 cm)	A12899-5.000
6.00" (15.24 cm) Bore		1 3/8" (3.49 cm)	A12899-6.000
7.00" (17.78 cm) Bore		1 3/8" (3.49 cm)	A12899-7.000

The diagram is an exploded view of a mechanical assembly. It features a central drive shaft with multiple gears. A motor is connected to the top of the shaft. A large flywheel is mounted on the side, and a tire is attached to the bottom. Various bolts, washers, and structural components are shown in their relative positions. The parts are numbered 1 through 34, corresponding to the parts list on the right.

REV.	DESCRIPTION	DATE	APPROVED	ECR#
A	CHANGED S.O.M. A12087-00000 TO PURCHASED PART # 007644-2.500	12/13/2021	ABE	2021-0011
B	A10015-00003 CHANGED TO A10015-0003LH	01/26/2023	RJ	2023-0010
C	0A5477-00009 DISSOLVED INTO INDIVIDUAL PARTS	02/16/2023	RJ	2023-0014

ITEM NO.	PART NUMBER	DESCRIPTION	QTY.
1	005476-00002	ROLLER CHAIN X 57.50"	57.50"
2	005476-00003	ROLLER CHAIN (COUPLER LINK)	1
3	005477-00001	#40 ASA ROLLER CHAIN	42"
4	005477-00007	#40 ASA ROLLER CHAIN (COUPLER LINK)	1
5	005477-00008	#40 ASA ROLLER CHAIN (HALF LINK)	1
6	005631-00000	1/2"-13 CONE WHEEL LUG NUT	6
7	006021-00016	8-12S 45 DEG. EXTERNAL PIPE/ 37 DEG. ELBOW	2
8	006037-3.250	5/16"-18 X 3-1/4" GRADE 5 H.H.C.S.	2
9	006040-2.000	1/2"-13 X 2.00" GRADE 5 H.H.C.S.	2
10	006040-2.500	1/2"-13 X 2-1/2" GRADE 5 H.H.C.S.	1
11	006040-3.250	1/2"-13 X 3-1/4" GRADE 5 H.H.C.S.	2
12	006074-00000	7/16" HEX NUT	3
13	006106-00000	FLAT WASHER, 5/16 USS	2
14	006112-00000	FLAT WASHER, 1/2 USS	4
15	006148-00000	LOCKWASHER, 5/16	2
16	006151-00000	LOCKWASHER, 1/2	9
17	006325-3.500	1/2" X 3-1/2" CUP POINT S.H.S.S.	1
18	006392-00000	1/2"-13 NYLON NTE LOCKNUT	2
19	006406-00000	1/2"-13 LOCKNUT	2
20	007644-2.500	1/2"-20 X 2.50" GRADE 8	6
21	010305-00002	ASSEMBLY, TIRE & RIM	1
22	010825-00003	5/32" TUBE TO MALE 1/8" NPT FITTING	1
23	010829-00004	MALE ELBOW - 5/32" TUBE TO MALE 10-32 NPT FITTING	1
24	011993-00000	BRAKE CALIPER	1
25	012126-00002	BRAKE BUSHING	2
26	013602-00000	CHECK VALVE	1
27	0A5875-00003	ASSEMBLY, DRIVE MOTOR & SPROCKET	1
28	0A5910-00007	ASSEMBLY, REDUCTION SPROCKET	1
29	0A5917-00016	WELDMENT, L.H. DRIVE ASSEMBLY	1
30	0A5918-00002	ASSEMBLY, STEERING SPINDLE	1
31	A10015-0003LH	WELDMENT, L.H. CHAIN GUARD	1
32	A11982-00000	WELDMENT, COVER	1
33	A12054-00000	WELDMENT, DRIVE HUB	1
34	A12090-00000	ASSEMBLY, HUB AND SPINDLE	1

#

RAW MATERIAL MATERIAL LOCATION

MANUFACTURING LOCATION

NO INFORMATION SHOWN ON THIS DRAWING IS CONSIDERED A PART OF THE DESIGN. ANY INFORMATION NOT SHOWN IS NOT TO BE USED FOR THE MANUFACTURE OF ANY PARTS.

DO NOT SCALE DRAWING

CHECKED BY: RJ

APPROVED BY:

DATE: 02/16/2023

KEY LEVEL: C

TITLE: ASSEMBLY, R.H. DRIVE

ROUTING NO. LOCATION

FIGURE NO. DRAWING NUMBER: A10020-00009

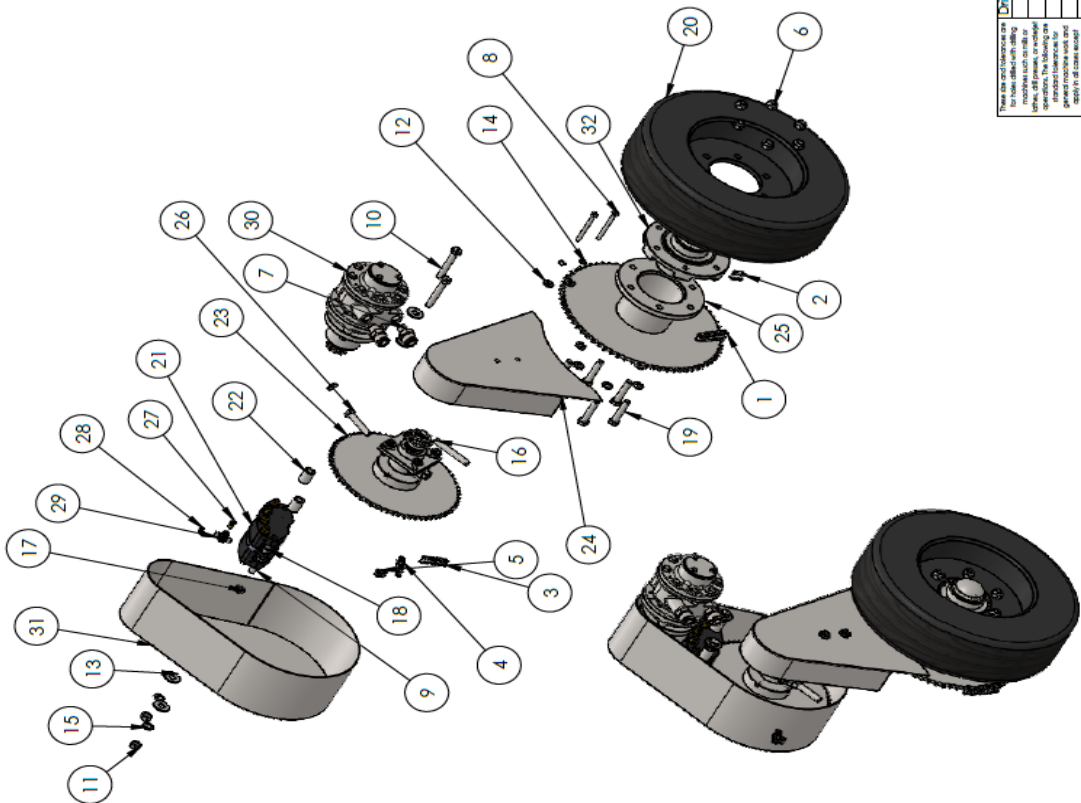
Dimension in accordance with ANSI Y14	LOCATION	ROUTING NO.	FIGURE NO.
Dimension in accordance with ANSI Y14			

Unified Hole Size	Tolerance
.0156 (1/16)	+0.004/-0.003
.0312 (1/8)	+0.004/-0.003
.0625 (1/4)	+0.004/-0.003
.1250 (1/2)	+0.004/-0.003
.2500 (1)	+0.004/-0.003
.5000 (1/2)	+0.004/-0.003
1.0000 (1)	+0.004/-0.003
2.0000 (1)	+0.004/-0.003
4.0000 (1)	+0.004/-0.003
8.0000 (1)	+0.004/-0.003
16.0000 (1)	+0.004/-0.003
32.0000 (1)	+0.004/-0.003
64.0000 (1)	+0.004/-0.003
128.0000 (1)	+0.004/-0.003
256.0000 (1)	+0.004/-0.003
512.0000 (1)	+0.004/-0.003
1024.0000 (1)	+0.004/-0.003
2048.0000 (1)	+0.004/-0.003
4096.0000 (1)	+0.004/-0.003
8192.0000 (1)	+0.004/-0.003
16384.0000 (1)	+0.004/-0.003
32768.0000 (1)	+0.004/-0.003
65536.0000 (1)	+0.004/-0.003
131072.0000 (1)	+0.004/-0.003
262144.0000 (1)	+0.004/-0.003
524288.0000 (1)	+0.004/-0.003
1048576.0000 (1)	+0.004/-0.003
2097152.0000 (1)	+0.004/-0.003
4194304.0000 (1)	+0.004/-0.003
8388608.0000 (1)	+0.004/-0.003
16777216.0000 (1)	+0.004/-0.003
33554432.0000 (1)	+0.004/-0.003
67108864.0000 (1)	+0.004/-0.003
134217728.0000 (1)	+0.004/-0.003
268435456.0000 (1)	+0.004/-0.003

REVISIONS					ITEM NO.		PART NUMBER		DESCRIPTION		QTY.																				
REV.	DESCRIPTION	DATE	APPROVED	ECR#	1	2	3	4	5	6	7	8	9	10	11	12	13	14	15	16	17	18	19	20	21	22	23	24	25	26	
A	CHANGED BOM FOR A10021 TO PURCHASED PAT# 0076642-500	12/13/2021	AE8																												
B	REMOVED (1) 0084177-500 & (2) 006074-00000 AND ADDED (2) 0A1656-00003	01/26/2023	RJ																												
C	0A5477-00009 DISSOLVED INTO INDIVIDUAL PARTS	02/16/2023	RJ																												

TOLERANCES		Dimension in accordance with ANSI Y14		ROUTING NO.		LOCATION		REV. LEVEL	
±	0.005	±	0.005	±	0.005	±	0.005	±	0.005
±	0.010	±	0.010	±	0.010	±	0.010	±	0.010
±	0.020	±	0.020	±	0.020	±	0.020	±	0.020
±	0.050	±	0.050	±	0.050	±	0.050	±	0.050
±	0.100	±	0.100	±	0.100	±	0.100	±	0.100
±	0.150	±	0.150	±	0.150	±	0.150	±	0.150
±	0.200	±	0.200	±	0.200	±	0.200	±	0.200
±	0.250	±	0.250	±	0.250	±	0.250	±	0.250
±	0.300	±	0.300	±	0.300	±	0.300	±	0.300
±	0.350	±	0.350	±	0.350	±	0.350	±	0.350
±	0.400	±	0.400	±	0.400	±	0.400	±	0.400
±	0.450	±	0.450	±	0.450	±	0.450	±	0.450
±	0.500	±	0.500	±	0.500	±	0.500	±	0.500
±	0.550	±	0.550	±	0.550	±	0.550	±	0.550
±	0.600	±	0.600	±	0.600	±	0.600	±	0.600
±	0.650	±	0.650	±	0.650	±	0.650	±	0.650
±	0.700	±	0.700	±	0.700	±	0.700	±	0.700
±	0.750	±	0.750	±	0.750	±	0.750	±	0.750
±	0.800	±	0.800	±	0.800	±	0.800	±	0.800
±	0.850	±	0.850	±	0.850	±	0.850	±	0.850
±	0.900	±	0.900	±	0.900	±	0.900	±	0.900
±	0.950	±	0.950	±	0.950	±	0.950	±	0.950
±	1.000	±	1.000	±	1.000	±	1.000	±	1.000
±	1.050	±	1.050	±	1.050	±	1.050	±	1.050
±	1.100	±	1.100	±	1.100	±	1.100	±	1.100
±	1.150	±	1.150	±	1.150	±	1.150	±	1.150
±	1.200	±	1.200	±	1.200	±	1.200	±	1.200
±	1.250	±	1.250	±	1.250	±	1.250	±	1.250
±	1.300	±	1.300	±	1.300	±	1.300	±	1.300
±	1.350	±	1.350	±	1.350	±	1.350	±	1.350
±	1.400	±	1.400	±	1.400	±	1.400	±	1.400
±	1.450	±	1.450	±	1.450	±	1.450	±	1.450
±	1.500	±	1.500	±	1.500	±	1.500	±	1.500
±	1.550	±	1.550	±	1.550	±	1.550	±	1.550
±	1.600	±	1.600	±	1.600	±	1.600	±	1.600
±	1.650	±	1.650	±	1.650	±	1.650	±	1.650
±	1.700	±	1.700	±	1.700	±	1.700	±	1.700
±	1.750	±	1.750	±	1.750	±	1.750	±	1.750
±	1.800	±	1.800	±	1.800	±	1.800	±	1.800
±	1.850	±	1.850	±	1.850	±	1.850	±	1.850
±	1.900	±	1.900	±	1.900	±	1.900	±	1.900
±	1.950	±	1.950	±	1.950	±	1.950	±	1.950
±	2.000	±	2.000	±	2.000	±	2.000	±	2.000
±	2.050	±	2.050	±	2.050	±	2.050	±	2.050
±	2.100	±	2.100	±	2.100	±	2.100	±	2.100
±	2.150	±	2.150	±	2.150	±	2.150	±	2.150
±	2.200	±	2.200	±	2.200	±	2.200	±	2.200
±	2.250	±	2.250	±	2.250	±	2.250	±	2.250
±	2.300	±	2.300	±	2.300	±	2.300	±	2.300
±	2.350	±	2.350	±	2.350	±	2.350	±	2.350
±	2.400	±	2.400	±	2.400	±	2.400	±	2.400
±	2.450	±	2.450	±	2.450	±	2.450	±	2.450
±	2.500	±	2.500	±	2.500	±	2.500	±	2.500
±	2.550	±	2.550	±	2.550	±	2.550	±	2.550
±	2.600	±	2.600	±	2.600	±	2.600	±	2.600
±	2.650	±	2.650	±	2.650	±	2.650	±	2.650
±	2.700	±	2.700	±	2.700	±	2.700	±	2.700
±	2.750	±	2.750	±	2.750	±	2.750	±	2.750
±	2.800	±	2.800	±	2.800	±	2.800	±	2.800
±	2.850	±	2.850	±	2.850	±	2.850	±	2.850
±	2.900	±	2.900	±	2.900	±	2.900	±	2.900
±	2.950	±	2.950	±	2.950	±	2.950	±	2.950
±	3.000	±	3.000	±	3.000	±	3.000	±	3.000
±	3.050	±	3.050	±	3.050	±	3.050	±	3.050
±	3.100	±	3.100	±	3.100	±	3.100	±	3.100
±	3.150	±	3.150	±	3.150	±	3.150	±	3.150
±	3.200	±	3.200	±	3.200	±	3.200	±	3.200
±	3.250	±	3.250	±	3.250	±	3.250	±	3.250
±	3.300	±	3.300	±	3.300	±	3.300	±	3.300
±	3.350	±	3.350	±	3.350	±	3.350	±	3.350
±	3.400	±	3.400	±	3.400	±	3.400	±	3.400
±	3.450	±	3.450	±	3.450	±	3.450	±	3.450
±	3.500	±	3.500	±	3.500	±	3.500	±	3.500
±	3.550	±	3.550	±	3.550	±	3.550	±	3.550
±	3.600	±	3.600	±	3.600	±	3.600	±	3.600
±	3.650	±	3.650	±	3.650	±	3.650	±	3.650
±	3.700	±	3.700	±	3.700	±	3.700	±	3.700
±	3.750	±	3.750	±	3.750	±	3.750	±	3.750
±	3.800	±	3.800	±	3.800	±	3.800	±	3.800
±	3.850	±	3.850	±	3.850	±	3.850	±	3.850
±	3.900	±	3.900	±	3.900	±	3.900	±	3.900
±	3.950	±	3.950	±	3.950	±	3.950	±	3.950
±	4.000	±	4.000	±	4.000	±	4.000	±	4.000
±	4.050	±	4.050	±	4.050	±	4.050	±	4.050
±	4.100	±	4.100	±	4.100	±	4.100	±	4.100
±	4.150	±	4.150	±	4.150	±	4.150	±	4.150
±	4.200	±	4.200	±	4.200	±	4.200	±	4.200
±	4.250	±	4.250	±	4.250	±	4.250	±	4.250
±	4.300	±	4.300	±	4.300	±	4.300	±	4.300
±	4.350	±	4.350	±	4.350	±	4.350	±	4.350
±	4.400	±	4.400	±	4.400	±	4.400	±	4.400
±	4.450	±	4.450	±	4.450	±	4.450	±	4.450
±	4.500	±	4.500	±	4.500	±	4.500	±	4.500
±	4.550	±	4.550	±	4.550	±	4.550	±	4.550
±	4.600	±	4.600	±	4.600	±	4.600	±	4.600
±	4.650	±	4.650	±	4.650	±	4.650	±	4.650
±	4.700	±	4.700	±	4.700	±	4.700	±	4.700
±	4.750	±	4.750	±	4.750	±	4.750	±	4.750
±	4.800	±	4.800	±	4.800	±	4.800	±	4.800
±	4.850	±	4.850	±	4.850	±	4.850	±	4.850
±	4.900	±	4.900	±	4.900	±	4.900	±	4.900
±	4.950	±	4.950	±	4.950	±	4.950	±	4.950
±	5.000	±	5.000	±	5.000	±	5.000	±	5.000
±	5.050	±	5.050	±	5.050	±	5.050	±	5.050
±	5.100	±	5.100	±	5.100	±	5.100	±	5.100
±	5.150	±	5.150	±	5.150	±	5.150	±	5.150
±	5.200	±	5.200	±	5.200	±	5.200	±	5.200
±	5.250	±	5.250	±	5.250	±	5.250	±	5.250
±	5.300	±	5.300	±	5.300	±	5.300	±	5.300
±	5.350	±	5.350	±	5.350	±	5.350	±	5.350
±	5.400	±	5.400	±	5.400	±	5.400	±	5.400
±	5.450	±	5.450	±	5.450	±	5.450	±	5.450
±	5.500	±	5.500	±	5.500	±	5.500	±	5.500
±	5.550	±	5.550	±	5.550	±	5.550	±	5.550
±	5.600	±	5.600	±	5.600	±	5.600	±	5.600
±	5.650	±	5.650	±	5.650	±	5.650	±	5.650
±	5.700	±	5.700	±	5.700	±	5.700	±	5.700
±	5.750	±	5.750	±	5.750	±	5.750	±	5.750
±	5.800	±	5.800	±	5.800	±	5.800	±	5.800
±	5.850	±	5.850	±	5.850	±	5.850	±	5.850
±	5.900	±	5.900	±	5.900	±	5.900	±	5.900
±	5.950	±	5.950	±	5.950	±	5.950	±	5.950
±	6.000	±	6.000	±	6.000	±	6.000	±	6.000
±	6.050	±	6.050	±	6.050	±	6.050	±	6.050
±	6.100	±	6.100	±	6.100	±	6.100	±	6.100
±	6.150	±	6.150	±	6.150	±	6.150	±	6.150
±	6.200	±	6.200	±	6.200	±	6.200	±	6.200
±	6.250	±	6.250	±	6.250	±	6.250	±	6.250
±	6.300	±	6.300	±	6.300	±	6.300	±	6.300
±	6.350	±	6.350	±	6.350	±	6.350	±	6.350
±	6.400	±	6.400	±	6.400	±	6.400	±	6.400
±	6.450	±	6.450	±	6.450	±	6.450	±	6.450
±	6.500	±	6.500	±	6.500	±	6.500	±	6.500
±	6.550	±	6.550	±					

REVISIONS				ITEM NO.	PART NUMBER	DESCRIPTION	QTY.
REV.	DESCRIPTION	DATE	APPROVED				
A	CHANGED FROM FOR A12087-00000 TO PURCHASED PART# 007664-2.500	12/13/2021	AEB	1	005476-00002	ROLLER CHAIN X 57.50"	57.50"
B	0A5477-00009 DISSOLVED INTO INDIVIDUAL PARTS	02/16/2023	RJ	2	005476-00003	ROLLER CHAIN (COUPLER LINK)	1
				3	005477-00001	#40 ASA ROLLER CHAIN	42"
				4	005477-00007	#40 ASA ROLLER CHAIN (COUPLER LINK)	1
				5	005477-00008	#40 ASA ROLLER CHAIN (HALF LINK)	1
				6	005631-00000	1/2"-13 CONE WHEEL LUG NUT	6
				7	006007-00019	8-12S 3/7 DEG. MALE PIPE CONNECTOR	2
				8	006037-3.250	5/16"-18 X 3-1/4" GRADE 5 H.H.C.S.	2
				9	006040-2.000	1/2"-13 X 2.00" GRADE 5 H.H.C.S.	2
				10	006040-3.250	1/2"-13 X 3-1/4" GRADE 5 H.H.C.S.	2
				11	006074-00000	7/16" HEX NUT	3
				12	006106-00000	FLAT WASHER, 5/16 USS	2
				13	006112-00000	FLAT WASHER, 1/2 USS	4
				14	006148-00000	LOCKWASHER, 5/16	2
				15	006151-00000	LOCKWASHER, 1/2	9
				16	006325-3.500	1/2" X 3-1/2" CUP POINT S.H.S.S.	1
				17	006392-00000	1/2"-13 NYLON NITE LOCKNUT	2
				18	006406-00000	1/2"-13 LOCKNUT	2
				19	007664-2.500	1/2"-20 X 2.50" GRADE 8	6
				20	010305-00002	ASSEMBLY, TIRE & RIM	1
				21	011993-00000	BRAKE CALIPER	1
				22	012126-00002	BRAKE BUSHING	2
				23	0A5910-00007	ASSEMBLY, REDUCTION SPROCKET	1
				24	A11982-00000	WELDMENT, COVER	1
				25	A12054-00000	WELDMENT, DRIVE HUB	1
				26	006040-2.500	1/2"-13 X 2-1/2" GRADE 5 H.H.C.S.	1
				27	010825-00003	5/32" TUBE TO MALE 1/8" NPT FITTING	1
				28	010829-00004	MALE ELBOW - 5/32" TUBE TO MALE 10-32 NPT FITTING	1
				29	013602-00000	CHECK VALVE	1
				30	0A5875-00003	ASSEMBLY, DRIVE MOTOR & SPROCKET	1
				31	A10015-00003	WELDMENT, L.H. CHAIN GUARD	1
				32	A12090-00000	ASSEMBLY, HUB AND SPINDLE	1



Drilled Hole Size	Tolerance
Ø.125 (1/8")	±.005 (A11982)
Ø.1875 (3/16")	±.005 (A11982)
Ø.250 (1/4")	±.005 (A11982)
Ø.3125 (5/16")	±.005 (A11982)
Ø.375 (3/8")	±.005 (A11982)
Ø.4375 (7/16")	±.005 (A11982)
Ø.500 (1/2")	±.005 (A11982)
Ø.5625 (9/16")	±.005 (A11982)
Ø.625 (5/8")	±.005 (A11982)
Ø.6875 (11/16")	±.005 (A11982)
Ø.750 (3/4")	±.005 (A11982)
Ø.8125 (13/16")	±.005 (A11982)
Ø.875 (7/8")	±.005 (A11982)
Ø.9375 (15/16")	±.005 (A11982)
Ø.1000 (1")	±.005 (A11982)

TOLERANCES	Dimension in accordance with ANSI Y14
XX ± .005	FUTURE NO.
XX ± .005	LOCATION
XX ± .005	ROUTING NO.
XX ± .005	DRAWING NUMBER:

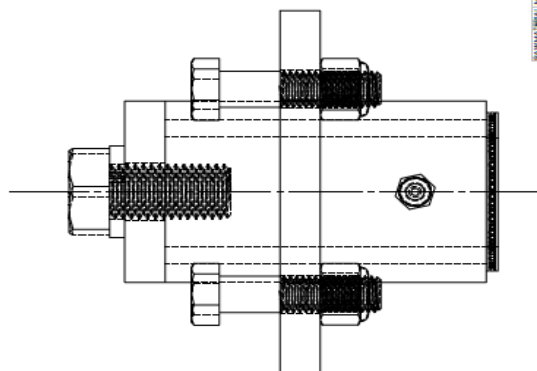
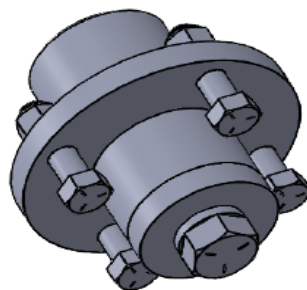
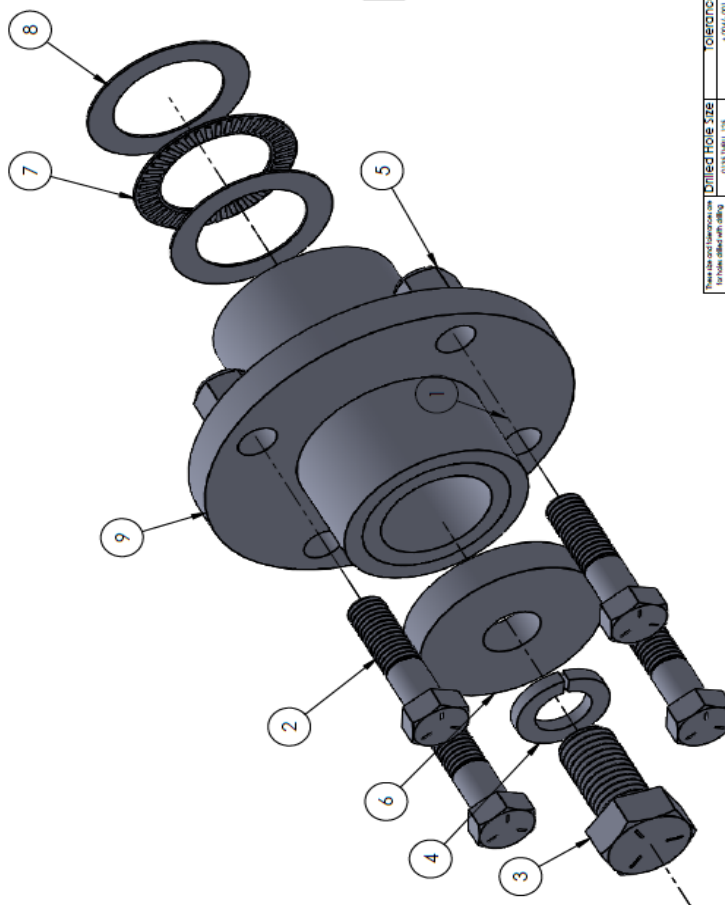
TITLE: ASSEMBLY, REAR DRIVE	
DO NOT SCALE DRAWING	
CHECKED BY: AEB	
APPROVED BY: RJ	
DRAWN BY: RJ	
DATE: 3/29/2023	
REV. LEVEL: B	

FURNISH MATERIAL		LOCKER	
MINI-MEAT CO., INC.		MINI-MEAT CO., INC.	
THIS INFORMATION IS FOR INFORMATIONAL PURPOSES ONLY. IT IS NOT A CONTRACT. A CONTRACT IS A CONTRACT. A CONTRACT IS A CONTRACT.		THIS INFORMATION IS FOR INFORMATIONAL PURPOSES ONLY. IT IS NOT A CONTRACT. A CONTRACT IS A CONTRACT. A CONTRACT IS A CONTRACT.	

REVISIONS			
REV.	DESCRIPTION	DATE	APPROVED
A	REMOVED (1) 6485-0.375	09/14/2018	RJ

ITEM NO.	PART NUMBER	DESCRIPTION	QTY.
1	798	GREASE FITTING	1
2	6040-2.00	1/2"-13 HHCS	4
3	6043-1.50	3/4"-10 X 1.50" LONG	1
4	6155	3/4" LOCK WASHER	1
5	6406	HEX LOCK NUT 1/2-13	4
6	12092-1	RETAINER	1
7	12644	THRUST ROLLER AND CAGE ASSEMBLY	1
8	12645	THRUST BEARING WASHER	2
9	A12641	WELDMENT, HUB	1

REVISIONS			
REV.	DESCRIPTION	DATE	APPROVED
A	REMOVED (1) 6489-0.375	09/14/2018	RJ



See the list and line items on page 10 for machine details such as rate, type, oil pan size, or weight.	United Hole Size	Tolerance
1/2" dia. drill press, or motorized hand drill	.0150 to .0160 1/16	±.0004-.001
1/2" dia. drill press, or motorized hand drill	.1250 to .0160 2/50	±.0005-.001
1/2" dia. drill press, or motorized hand drill	.25 to .0160 1/50	±.0006-.001
1/2" dia. drill press, or motorized hand drill	.50 to .0160 1/50	±.0008-.001
1/2" dia. drill press, or motorized hand drill	.75 to .0160 1/20	±.0010-.001
1/2" dia. drill press, or motorized hand drill	1.00 to .0160 2/50	±.0015-.001

TOLERANCES (EXCEPT AS NOTED)	
X	± .060
XX	± .030
XXX	± .005
4/X	+1/-1

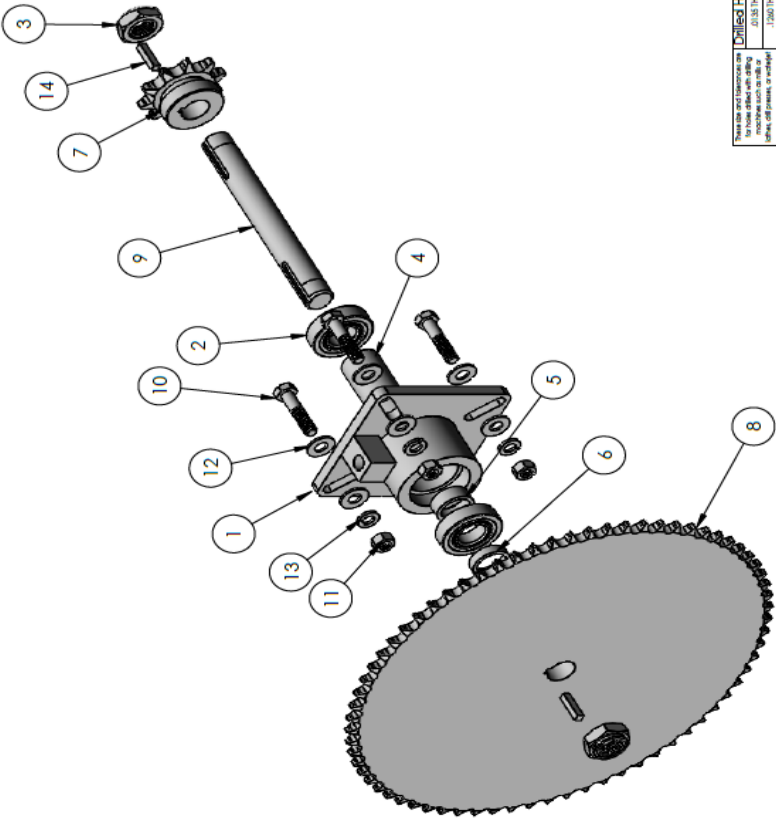
Dimension in accordance with ANSI Y14	LOCATION
--	----------

DO NOT SCALE DRAWING	
TITLE:	STEERING SPINDLE ASSEMBLY
ROUTING NO.	DRAWING NUMBER: A5918-2

[illegible]

ITEM NO.	PART NUMBER	DESCRIPTION	QTY.
1	A5209-2	HUB WELDMENT MACHINED	1
2	1646-2	BEARING, BALL	2
3	1941	LOCKNUT	2
4	5215-1	SPACER	1
5	5214-3	SPACER	1
6	5214-4	SPACER	1
7	5478	SPROCKET	1
8	5481-2	SPROCKET	1
9	5660-2	SHAFT, REDUCTION	1
10	6037-1.50	BOLT 5/16"18	4
11	6071	NUT, HEX 5/16-18	4
12	6106	WASHER 5/16"	8
13	6148	LOCKWASHER 5/16	4
14	12804-.875 KEY	12804-.875 SQ. KEY	2

REVISIONS		
REV.	DESCRIPTION	DATE



Drilled Hole Size	Tolerance
.0010-.0015	+0.004/-0.001
.0015-.0020	+0.004/-0.001
.0020-.0025	+0.004/-0.001
.0025-.0030	+0.004/-0.001
.0030-.0035	+0.004/-0.001
.0035-.0040	+0.004/-0.001
.0040-.0045	+0.004/-0.001
.0045-.0050	+0.004/-0.001
.0050-.0055	+0.004/-0.001
.0055-.0060	+0.004/-0.001
.0060-.0065	+0.004/-0.001
.0065-.0070	+0.004/-0.001
.0070-.0075	+0.004/-0.001
.0075-.0080	+0.004/-0.001
.0080-.0085	+0.004/-0.001
.0085-.0090	+0.004/-0.001
.0090-.0095	+0.004/-0.001
.0095-.0100	+0.004/-0.001
.0100-.0105	+0.004/-0.001
.0105-.0110	+0.004/-0.001
.0110-.0115	+0.004/-0.001
.0115-.0120	+0.004/-0.001
.0120-.0125	+0.004/-0.001
.0125-.0130	+0.004/-0.001
.0130-.0135	+0.004/-0.001
.0135-.0140	+0.004/-0.001
.0140-.0145	+0.004/-0.001
.0145-.0150	+0.004/-0.001
.0150-.0155	+0.004/-0.001
.0155-.0160	+0.004/-0.001
.0160-.0165	+0.004/-0.001
.0165-.0170	+0.004/-0.001
.0170-.0175	+0.004/-0.001
.0175-.0180	+0.004/-0.001
.0180-.0185	+0.004/-0.001
.0185-.0190	+0.004/-0.001
.0190-.0195	+0.004/-0.001
.0195-.0200	+0.004/-0.001
.0200-.0205	+0.004/-0.001
.0205-.0210	+0.004/-0.001
.0210-.0215	+0.004/-0.001
.0215-.0220	+0.004/-0.001
.0220-.0225	+0.004/-0.001
.0225-.0230	+0.004/-0.001
.0230-.0235	+0.004/-0.001
.0235-.0240	+0.004/-0.001
.0240-.0245	+0.004/-0.001
.0245-.0250	+0.004/-0.001
.0250-.0255	+0.004/-0.001
.0255-.0260	+0.004/-0.001
.0260-.0265	+0.004/-0.001
.0265-.0270	+0.004/-0.001
.0270-.0275	+0.004/-0.001
.0275-.0280	+0.004/-0.001
.0280-.0285	+0.004/-0.001
.0285-.0290	+0.004/-0.001
.0290-.0295	+0.004/-0.001
.0295-.0300	+0.004/-0.001
.0300-.0305	+0.004/-0.001
.0305-.0310	+0.004/-0.001
.0310-.0315	+0.004/-0.001
.0315-.0320	+0.004/-0.001
.0320-.0325	+0.004/-0.001
.0325-.0330	+0.004/-0.001
.0330-.0335	+0.004/-0.001
.0335-.0340	+0.004/-0.001
.0340-.0345	+0.004/-0.001
.0345-.0350	+0.004/-0.001
.0350-.0355	+0.004/-0.001
.0355-.0360	+0.004/-0.001
.0360-.0365	+0.004/-0.001
.0365-.0370	+0.004/-0.001
.0370-.0375	+0.004/-0.001
.0375-.0380	+0.004/-0.001
.0380-.0385	+0.004/-0.001
.0385-.0390	+0.004/-0.001
.0390-.0395	+0.004/-0.001
.0395-.0400	+0.004/-0.001
.0400-.0405	+0.004/-0.001
.0405-.0410	+0.004/-0.001
.0410-.0415	+0.004/-0.001
.0415-.0420	+0.004/-0.001
.0420-.0425	+0.004/-0.001
.0425-.0430	+0.004/-0.001
.0430-.0435	+0.004/-0.001
.0435-.0440	+0.004/-0.001
.0440-.0445	+0.004/-0.001
.0445-.0450	+0.004/-0.001
.0450-.0455	+0.004/-0.001
.0455-.0460	+0.004/-0.001
.0460-.0465	+0.004/-0.001
.0465-.0470	+0.004/-0.001
.0470-.0475	+0.004/-0.001
.0475-.0480	+0.004/-0.001
.0480-.0485	+0.004/-0.001
.0485-.0490	+0.004/-0.001
.0490-.0495	+0.004/-0.001
.0495-.0500	+0.004/-0.001
.0500-.0505	+0.004/-0.001
.0505-.0510	+0.004/-0.001
.0510-.0515	+0.004/-0.001
.0515-.0520	+0.004/-0.001
.0520-.0525	+0.004/-0.001
.0525-.0530	+0.004/-0.001
.0530-.0535	+0.004/-0.001
.0535-.0540	+0.004/-0.001
.0540-.0545	+0.004/-0.001
.0545-.0550	+0.004/-0.001
.0550-.0555	+0.004/-0.001
.0555-.0560	+0.004/-0.001
.0560-.0565	+0.004/-0.001
.0565-.0570	+0.004/-0.001
.0570-.0575	+0.004/-0.001
.0575-.0580	+0.004/-0.001
.0580-.0585	+0.004/-0.001
.0585-.0590	+0.004/-0.001
.0590-.0595	+0.004/-0.001
.0595-.0600	+0.004/-0.001
.0600-.0605	+0.004/-0.001
.0605-.0610	+0.004/-0.001
.0610-.0615	+0.004/-0.001
.0615-.0620	+0.004/-0.001
.0620-.0625	+0.004/-0.001
.0625-.0630	+0.004/-0.001
.0630-.0635	+0.004/-0.001
.0635-.0640	+0.004/-0.001
.0640-.0645	+0.004/-0.001
.0645-.0650	+0.004/-0.001
.0650-.0655	+0.004/-0.001
.0655-.0660	+0.004/-0.001
.0660-.0665	+0.004/-0.001
.0665-.0670	+0.004/-0.001
.0670-.0675	+0.004/-0.001
.0675-.0680	+0.004/-0.001
.0680-.0685	+0.004/-0.001
.0685-.0690	+0.004/-0.001
.0690-.0695	+0.004/-0.001
.0695-.0700	+0.004/-0.001
.0700-.0705	+0.004/-0.001
.0705-.0710	+0.004/-0.001
.0710-.0715	+0.004/-0.001
.0715-.0720	+0.004/-0.001
.0720-.0725	+0.004/-0.001
.0725-.0730	+0.004/-0.001
.0730-.0735	+0.004/-0.001
.0735-.0740	+0.004/-0.001
.0740-.0745	+0.004/-0.001
.0745-.0750	+0.004/-0.001
.0750-.0755	+0.004/-0.001
.0755-.0760	+0.004/-0.001
.0760-.0765	+0.004/-0.001
.0765-.0770	+0.004/-0.001
.0770-.0775	+0.004/-0.001
.0775-.0780	+0.004/-0.001
.0780-.0785	+0.004/-0.001
.0785-.0790	+0.004/-0.001
.0790-.0795	+0.004/-0.001
.0795-.0800	+0.004/-0.001
.0800-.0805	+0.004/-0.001
.0805-.0810	+0.004/-0.001
.0810-.0815	+0.004/-0.001
.0815-.0820	+0.004/-0.001
.0820-.0825	+0.004/-0.001
.0825-.0830	+0.004/-0.001
.0830-.0835	+0.004/-0.001
.0835-.0840	+0.004/-0.001
.0840-.0845	+0.004/-0.001
.0845-.0850	+0.004/-0.001
.0850-.0855	+0.004/-0.001
.0855-.0860	+0.004/-0.001
.0860-.0865	+0.004/-0.001
.0865-.0870	+0.004/-0.001
.0870-.0875	+0.004/-0.001
.0875-.0880	+0.004/-0.001
.0880-.0885	+0.004/-0.001
.0885-.0890	+0.004/-0.001
.0890-.0895	+0.004/-0.001
.0895-.0900	+0.004/-0.001
.0900-.0905	+0.004/-0.001
.0905-.0910	+0.004/-0.001
.0910-.0915	+0.004/-0.001
.0915-.0920	+0.004/-0.001
.0920-.0925	+0.004/-0.001
.0925-.0930	+0.004/-0.001
.0930-.0935	+0.004/-0.001
.0935-.0940	+0.004/-0.001
.0940-.0945	+0.004/-0.001
.0945-.0950	+0.004/-0.001
.0950-.0955	+0.004/-0.001
.0955-.0960	+0.004/-0.001
.0960-.0965	+0.004/-0.001
.0965-.0970	+0.004/-0.001
.0970-.0975	+0.004/-0.001
.0975-.0980	+0.004/-0.001
.0980-.0985	+0.004/-0.001
.0985-.0990	+0.004/-0.001
.0990-.0995	+0.004/-0.001
.0995-1.000	+0.004/-0.001

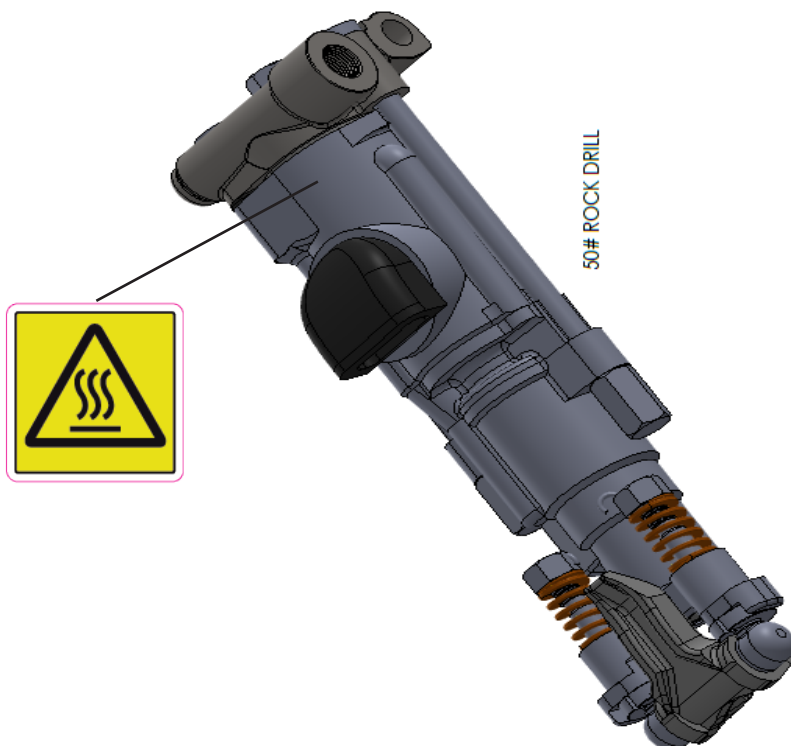
Dimension in accordance with ANSI Y14	LOCATION
FIGURE NO.	
1	
2	
3	
4	
5	
6	
7	
8	
9	
10	
11	
12	
13	
14	

TOLERANCES	Dimension in accordance with ANSI Y14
ASSEMBLY	
FINISH	
DRILLING	
TURNING	
GRINDING	
THREADS	
WELDING	
COATINGS	
OTHER	

DO NOT SCALE DRAWING	DO NOT SCALE DRAWING
DATE	DATE
REV.	REV.
1	1
2	2
3	3
4	4
5	5
6	6
7	7
8	8
9	9
10	10
11	11
12	12
13	13
14	14

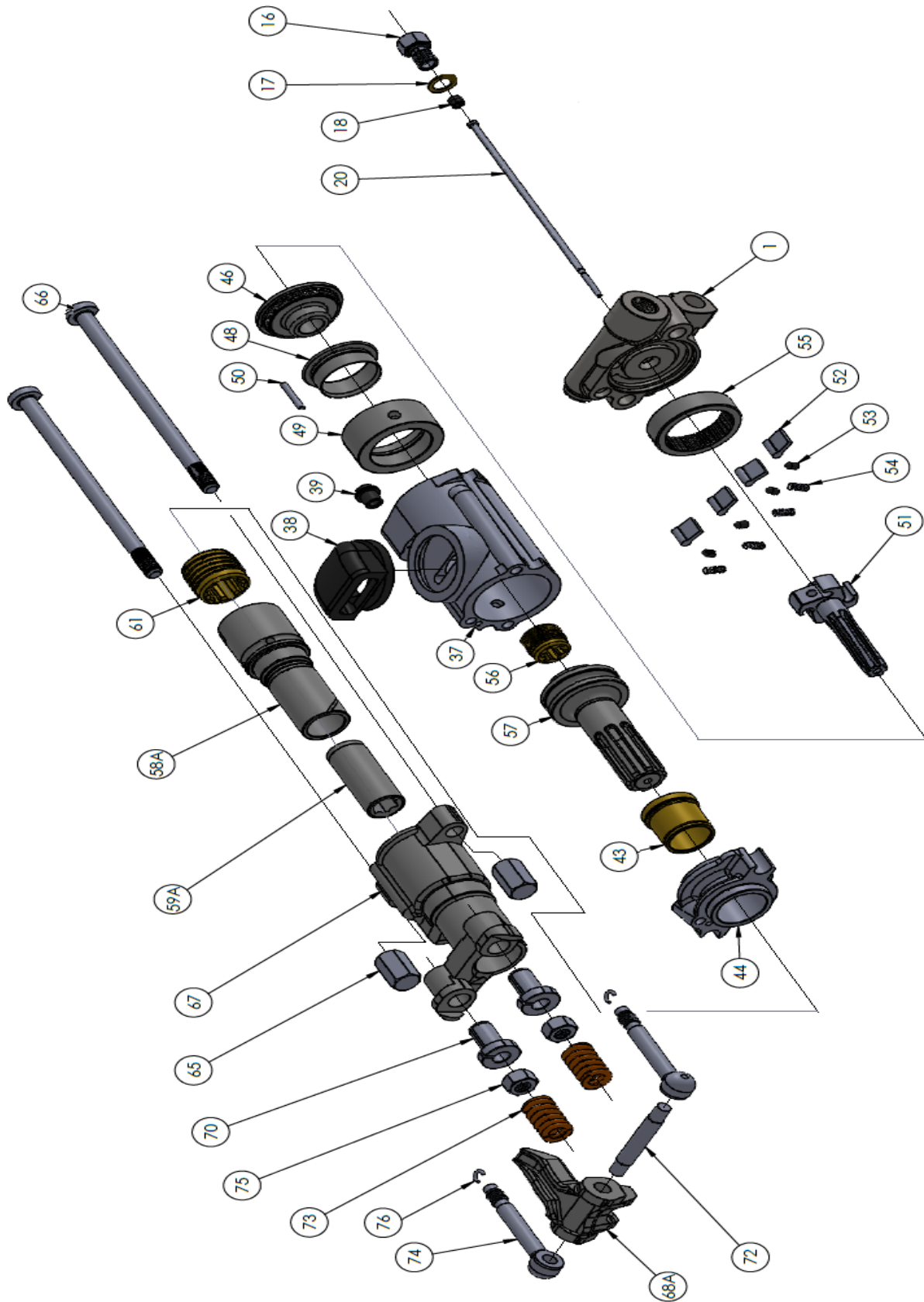
MANUFACTURING	MANUFACTURING
DATE	DATE
REV.	REV.
1	1
2	2
3	3
4	4
5	5
6	6
7	7
8	8
9	9
10	10
11	11
12	12
13	13
14	14

WHEN ORDERING REPLACEMENT PARTS YOU NEED TO FURNISH THE MODEL AND SERIAL NUMBER OF THE DRILL TOOL



ITEM NO.	PART NUMBER	DESCRIPTION	QTY.
1	009350-00001	BACKHEAD	1
16	009350-00016	BLOW TUBE GLAND	1
17	009350-00017	TUBE GLAND GASKET	1
18	009350-00018	GLAND GASKET	1
20	009350-00020	BLOW TUBE	1
37	009350-00037	CYLINDER	1
38	009350-00038	EXHAUST DEFLECTOR	1
39	009350-00039	CYLINDER GASKET	1
43	009350-00043	BUSHING	1
44	009350-00044	CENTER WASHER	1
46	009350-00046	VALVE CHEST COVER	1
48	009350-00048	AUTOMATIC VALVE	1
49	009350-00049	VALVE CHEST	1
50	009350-00050	VALVE DOWEL PIN	1
51	009350-00051	RIFLE BAR	1
52	009350-00052	ROTATION PAWL	4
53	009350-00053	ROTATION PLUNGER	4
54	009350-00054	PAWL SPRING	4
55	009350-00055	RATCHET RING	1
56	009350-00056	RIFLE NUT	1
57	009350-00057	PISTON	1
58	009350-00058	ROTATION SLEEVE 7/8" x 3-1/4"	1
58A	009350-00058A	ROTATION SLEEVE 7/8" x 4-1/4"	1
59	009350-00059	SLEEVE BUSHING 7/8" X 3-1/4"	1
59A	009350-00059A	SLEEVE BUSHING 7/8" X 4-1/4"	1
61	009350-00061	SLEEVE NUT	1
65	009350-00065	SIDE ROD NUT	2
66	009350-00066	SIDE ROD	2
67	009350-00067	FRONTHEAD	1
68	009350-00068	STEEL RETAINER 7/8" X 3-1/4"	1
68A	009350-00068A	STEEL RETAINER 7/8" X 4-1/4"	1
70	009350-00070	FRONTHEAD BUSHING	2
72	009350-00072	STEEL RETAINER PIN	1
73	009350-00073	STEEL RETAINER SPRING	2
74	009350-00074	STEEL RETAINER BOLT	2
75	009350-00075	STEEL RETAINER NUT	2
76	009350-00076	RETAINER BOLT LOCK CLIP	2

50# ROCK DRILL



PRESS FIT PARTS
59A 58A 44
43

REGULATOR INFORMATION

OPERATION

A regulator is used in a compressed air system to maintain nearly constant outlet pressure despite changes in the inlet air pressure and changes in downstream flow requirements. Outlet pressure is controlled by the adjusting screw (1). clockwise rotation increases and counter-clockwise rotation decreases outlet pressure setting. When the adjustment (1) is rotated fully counter-clockwise, no force is applied to the regulating spring (2), and the valve (6) is held closed by the valve spring (7). clockwise rotation of the adjustment (1) compresses the regulating spring (2) which applies a downward force on top of the diaphragm (4). The diaphragm (4) and valve pin (5) move downward forcing valve (6) off its seat (10) which allows air to flow through the regulator to the downstream system. Outlet pressure increases in the downstream system and sensing chamber (9) and applies an upward force on bottom of the diaphragm (4). The diaphragm (4), valve pin (5); and valve (6) move upward, compressing the regulator spring (2). Upward movement stops when the forces below the diaphragm balance the forces above the diaphragm. When there is no downstream flow demand, the balance of forces occurs with the valve (6) closed. When there is downstream flow demand, the balance of forces occurs when the valve opens sufficiently to compensate for demand, thus maintaining the desired outlet pressure. **RELIEVING TYPE REGULATORS.** With relieving regulators, outlet pressure can be reduced even though the system is deadended. When the adjustment (1) is turned counterclockwise, the force on the regulating spring (2) is reduced, and air pressure in the sensing chamber (9) moves the diaphragm (4) upward. This upward movement opens the relief passage (8) in the diaphragm and allows air to escape from the outlet side of the regulator through the relief passage (8) and vent (3) to atmosphere. As the outlet air pressure decreases to the reduced pressure setting, the diaphragm moves downward and closes the relief passage. The diaphragm will likewise move upward in a response to an increase in outlet pressure above the regulator setting, allowing air to escape to the atmosphere as described above. However, the flow capacity of the relief passage is limited, and depending upon the source of the overpressure condition, the outlet pressure might increase to a point significantly higher than the regulator setting. For this reason, the relief feature of a regulator must not be relied upon as an overpressure safety device. See WARNING note below.

MAINTENANCE

The regulator can be disassembled for servicing without removal from pipe line. To disassemble, shut off the inlet air and reduce pressure in inlet and outlet lines to zero. Turn adjusting screw (1) counterclockwise until all load is removed from regulating spring (7 or 7a): Remove bonnet screws (4), bonnet (3), upper springrest (5), spring (7), and diaphragm assembly (8). The intermediate springrest (6) and compound spring (7a) are used only on 3/4" (19mm) and 1" (25.4mm) models with 5 to 125 PSI (0.34 to 8.62 Bar) adjustment range. Unscrew and remove bottom plug (16), O-ring (15) and valve spring (14). Pull valve assembly (11) together with O-ring (12) out of body. Do not remove valve seat (10) unless replacement is necessary. Remove O-ring (9) using a hook shaped tool, taking care not to damage O-ring seating surfaces or valve seat. Clean parts using warm water and soap. Dry thoroughly. Inspect each part carefully. Replace any parts which are damaged. At reassembly, apply a wipe coat of silicone base grease to O-rings (9, 12, 15), to stem and body of valve assembly (11), and to center bore in bottom plug (16). Apply a light even coat of light grease to full length of threads and tip of adjusting screw (1). Tighten valve seat (10), if previously removed, to 80-100 inch-pounds torque (9-11.3 N-m) (1/4", 3/8" and 1/2" sizes) (6.35mm, 9.53mm, and 12.77mm sizes) or 25-30 foot-pounds torque (33.9-40.7 N-m) (3/4" and 1" sizes) (19mm and 25.4mm sizes). Tighten bottom plug (16) snugly by hand. Tighten bonnet screws (4) to 20-30 inch-pounds torque (2.3-3.4 N-m) (1/4", 3/8" and 1/2" sizes) (6.35mm, 9.53mm, and 12.77mm sizes) or 50-60 inch-pounds torque (5.6-6.8 N-m) (3/4" and 1" sizes) (19mm and 25.4mm sizes).

ADJUSTMENT

1. Before turning on system air pressure, turn regulator adjustment counterclockwise until all load is removed from regulating spring.
2. Turn on system air pressure.
3. Turn regulator adjustment clockwise until the desired outlet pressure is reached.
4. To avoid minor readjustment after making a change in pressure setting, always approach the desired pressure from a lower pressure. When reducing from a higher to a lower setting, first reduce to some pressure less than the desired, then bring up to the desired point.
5. Tighten jam out to lock pressure setting.

⚠ WARNING

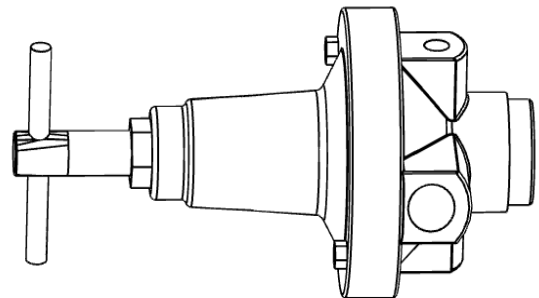
THESE REGULATORS ARE INTENDED FOR USE IN INDUSTRIAL COMPRESSED AIR SYSTEMS ONLY. DO NOT USE THESE REGULATORS WHERE PRESSURE OR TEMPERATURE CAN EXCEED RATED OPERATING CONDITIONS. SEE SPECIFICATIONS.

⚠ WARNING

IF OUTLET PRESSURES IN EXCESS OF THE REGULATOR PRESSURE SETTING COULD CAUSE DOWNSTREAM EQUIPMENT TO RUPTURE OR MALFUNCTION, INSTALL A PRESSURE RELIEF DEVICE DOWNSTREAM OF THE REGULATOR. THE RELIEF PRESSURE AND FLOW CAPACITY OF THE RELIEF DEVICE MUST SATISFY SYSTEM REQUIREMENTS.

⚠ WARNING

BEFORE USING WITH FLUIDS OTHER THAN AIR, FOR NON-INDUSTRIAL APPLICATIONS, OR FOR LIFE SUPPORT SYSTEMS, CONSULT C.A. NOR-GREN CO



INSTALLATION

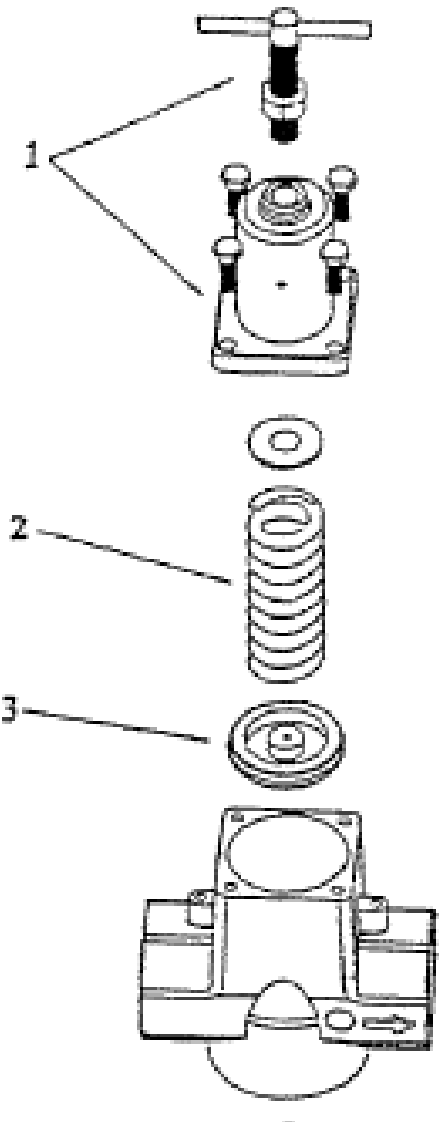
Install regulators so the airflow is in the direction of the arrow as indicated on the head of unit. Regulators should be installed downstream from filters and upstream from lubricators, but as close as possible to the pneumatic tools or appliances being serviced. The regulator will accurately control secondary pressure between 5 and 200 PSI (0.34 and 13.8 Bar), maximum primary pressure is 250 PSI (17 Bar). The self-bleed feature permits use on dead-end applications.

OPERATION ADJUSTMENTS

After the regulator is installed, back off pressure by adjusting T-handle counterclockwise before the air is turned on. Turn on air supply and adjust T-handle clockwise until the pressure gauge shows desired pressure. To lock the T-handle, tighten lock nut on adjustment screw.

MAINTENANCE

On detection of air leaks, pressure fluctuation, or “creep”, depressurize system and remove bottom cap. Inspect valve seat for damage or wear. Inspect seat in head casting for foreign material or damage. Clean with naphtha or kerosene and blow out with air. Replace any damaged parts. If leaks persist, remove spring cage, inspect piston and piston seat for wear or foreign materials. Replace any damaged Parts.



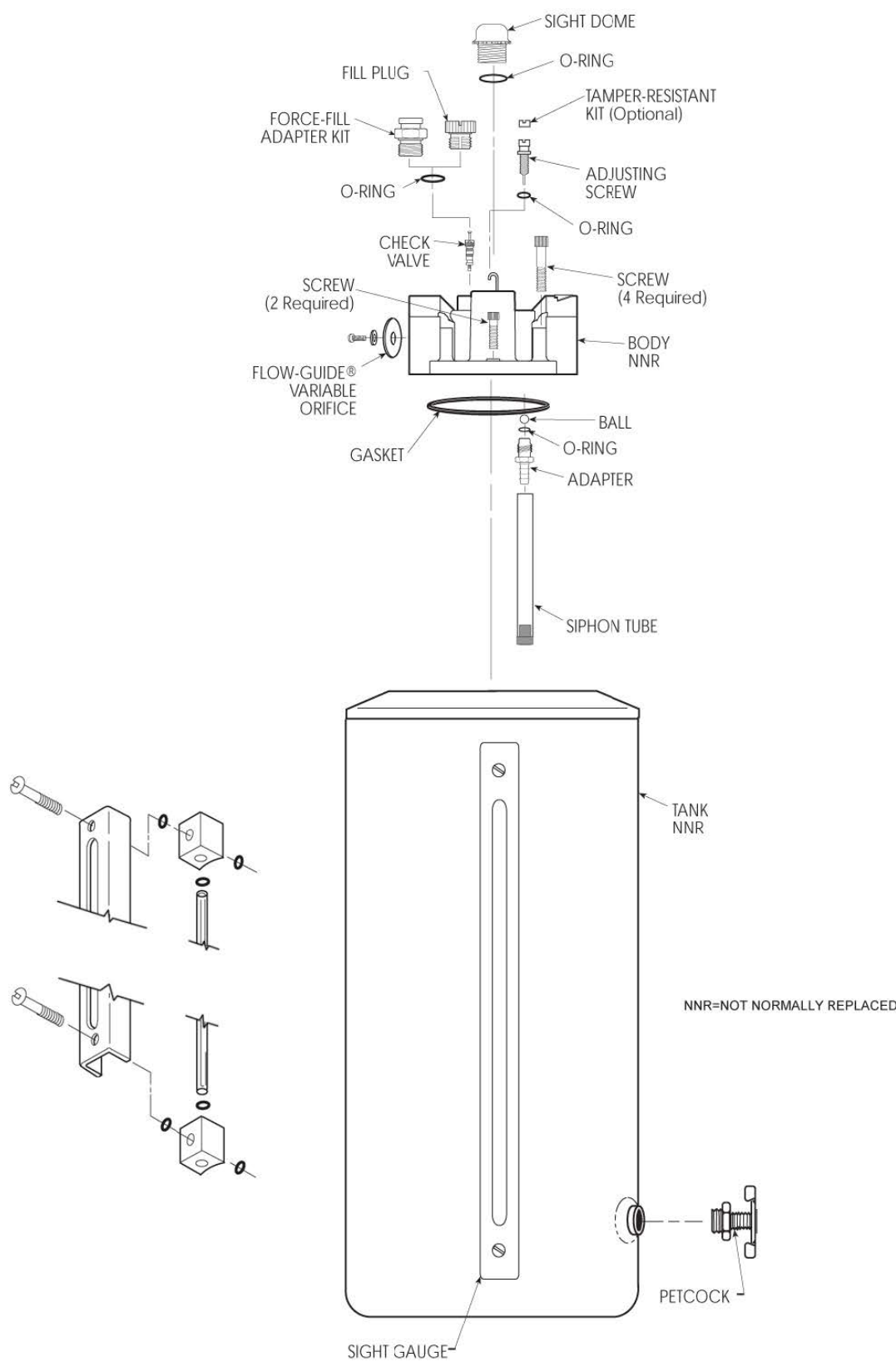
PART NUMBER	ITEM	KIT DESCRIPTION	CONTENTS
011703-00004	2, 3	Valve Kit	Valve Assembly, Valve Spring, O-Ring
011703-00003	3	Piston Kit	Relieving Piston Assembly (STD)
011703-00002	2	Spring Kit	Spring, 0-125 PSI (0-8.6 Bar) Range (STD)
011703-00001	1	Spring Cage Kit	T-Handle Adjusting Screw Assembly, Spring Cage, Screws

⚠ WARNING

FOR COMPRESSED AIR SERVICE ONLY. NOT TO BE USED ON LIFE SUPPORT SYSTEMS.

⚠ WARNING

Units are die cast aluminum. Do not over torque when installing regulator or gauge. Use of Teflon tape is not recommended.



LUBRICATOR INFORMATION

INSTALLATION

1. Refer to warning above.
2. Install as close as possible to the equipment requiring lubrication.
3. Install the unit with the air flowing through the body in the direction indicated by the arrow.
4. Install the same pipe-size unit as the pipeline in use. Avoid using fittings, couplings, etc., that restrict the airflow or baffle the oil out of the air at the lubricator outlet.
5. The lubricator may be filled under pressure by slowly removing the fill plug and pouring oil into the bowl through the fill tube. The tank may be taken off after the fill plug is removed. Do not replace the fill plug until the tank is secured in place. NOTE: As the fill plug is removed, the air pressure in the tank will be released.
6. Use only clean non-detergent oil. SAE 10 or lighter is usually best.
7. The rate of oil delivery can be controlled counterclockwise for more and clockwise for less delivery. This lubricator delivers all of the oil downstream that passes through the sight dome. The oil delivery rate will change automatically to deliver more oil during higher air flows and less oil for air flows lower than that at which the original setting was made.
8. Maximum pressure and temperature ratings for metal tanks are 200 PSI (14 Bar) and 175oF (79oC).

MAINTENANCE

1. Given clean operating conditions, this unit should be trouble-free. Contaminants from dirty oil may collect on the siphon tube inlet filter, requiring the filter to be cleaned by tapping on a hard surface and blowing off with an air blow gun. Drain off any contaminants which collect in the bottom of the bowl.
2. IF THE OIL DELIVERY RATE DROPS, shut off the air supply to the lubricator and reduce the pressure in the unit to zero. Remove the Flow-Guide® variable orifice screw and clean its air passage with a small wire. Check the bore that the screw fits into for contaminants and clean, if necessary. Be sure that the passageway from the sight dome cavity into the Flow-Guide® variable orifice post is open. Remove the adjusting screw and clean the needle and the seat in the body. Inspect and clean the passage from the needle seat down into the adapter.
3. Drain off any contaminants which collect in the bottom of the bowl.
4. Lubricate o-rings with Parker O-Lube before assembly.
5. Clean plastic bowl with a clean, dry cloth only.

WARNING

DO NOT place plastic bowl unit in service without metal bowl guard installed.

CAUTION

Certain compressor oils, chemicals, household cleaners, solvents, paints and fumes will attack plastic bowls and can cause bowl failure. Do not use near these materials. When bowl becomes dirty replace bowl or wipe only with a clean, dry cloth. Reinstall metal bowl guard or buy and install a metal bowl guard. Immediately replace any crazed, cracked, damaged or deteriorated plastic bowl with a metal bowl or a new plastic bowl and a metal bowl guard.

CAUTION

Except as otherwise specified by the manufacturer, this product is specifically designed for compressed air service, and used with any other fluid (liquid or gas) is a misapplication. For example, use with or injection of certain hazardous liquids or gases in the system (such as alcohol or liquid petroleum gas) could be harmful to the unit or result in a combustible condition or hazardous external leakage. Manufacturers warranties are void in the event of misapplication, and manufacturer assumes no responsibility for any resulting loss. Before using with fluids other than air, or for non-industrial applications, or for life support systems consult manufacturer for written approval.

NOTICE

WE CANNOT POSSIBLY LIST ALL HARMFUL SUBSTANCES. CHECK WITH A MOBAY CHEMICAL OR GENERAL ELECTRIC OFFICE FOR FURTHER INFORMATION ON POLYCARBONATE PLASTIC

Handwriting practice lines with the word MINNICH centered across the middle.

LIMITED WARRANTY, DISCLAIMER AND REMEDIES

Supplier warrants to Customer that the Services shall be provided in a workmanlike manner and that the Goods shall be free from defects in material and workmanship at the date of shipment from Supplier's facility. This warranty shall not run to any person other than Customer.

All claims under this warranty must be made in writing and delivered to Supplier prior to the expiration of one (1) year after the Goods have been delivered (or, if applicable, within one (1) year after the Services have been performed) or be forever barred. Supplier will repair or replace Goods or parts recognized and acknowledged by Supplier as being defective at the time of delivery without charge. However, Supplier will bill Customer for Goods and/or Services not covered by the warranty, including travel expenses incurred while performing warranty service calls. EQUIPMENT, COMPONENTS OR OTHER GOODS FURNISHED THAT ARE NOT MANUFACTURED BY SUPPLIER ARE ONLY COVERED TO THE EXTENT OF THE ORIGINAL MANUFACTURER'S WARRANTY, WHICH MAY VARY FROM THE ABOVE. Further, the above warranty shall not apply to any hardware or software that has been repaired or altered without Supplier's written permission by anyone other than Supplier's personnel. The foregoing states the sole and exclusive remedy for any breach of warranty or for any other claim based on any defect in, or nonperformance of, the Goods or Services, whether based upon contract, warranty, negligence, tort (including strict liability) or otherwise.

NO EXPRESS WARRANTIES AND NO IMPLIED WARRANTIES, WHETHER OF MERCHANTABILITY OR FITNESS FOR ANY PARTICULAR PURPOSE OR WEAR CAPACITY, OR OTHERWISE, SHALL APPLY TO THE GOODS AND SERVICES. SUPPLIER SPECIFICALLY DISCLAIMS AND EXCLUDES ALL OTHER EXPRESS AND IMPLIED WARRANTIES. NO WAIVER, ALTERATION, ADDITION OR MODIFICATION OF THE FOREGOING SHALL BE VALID UNLESS MADE IN WRITING AND SIGNED BY AN EXECUTIVE OFFICER OF SUPPLIER. IN NO EVENT WILL SUPPLIER BE LIABLE FOR ANY INCIDENTAL OR CONSEQUENTIAL DAMAGES.

WHAT IS NOT COVERED

This Limited Warranty does not cover any damage, deterioration or malfunction resulting from normal wear or tear, or any alteration, modification, improper or unreasonable use or maintenance, misuse, abuse, accident, neglect, exposure to excess moisture, fire, improper packing and shipping (such claims must be presented to the carrier), lightning, power surges, or other acts of nature. This Limited Warranty does not cover any damage, deterioration or malfunction resulting from the installation or removal of this product from any installation, any unauthorized tampering with this product, any repairs attempted by anyone unauthorized by Minnich to make such repairs, or any other cause which does not relate directly to a defect in materials and/or workmanship of this product.

WHAT IS COVERED

This limited warranty ("Limited Warranty") covers manufacturing defects in materials and workmanship of a product.

WHO IS COVERED:

Only the original purchaser of this product is covered under this Limited Warranty. This Limited Warranty is not transferable to subsequent purchasers or owners of this product. The product must have been purchased directly from Minnich or from an authorized Minnich reseller.

ORDER VIA INTERNET!



Order Online:
<https://www.minnich-mfg.com/login>



- View parts
- Order Parts
- Print specific information
- If you don't have a login give us a call.

ORDER VIA PHONE!



Contact us at:
419-903-0010

SCAN FOR HELPFUL VIDEOS!



WE ACCEPT THE FOLLOWING CARDS!



NON-DEALER AND INTERNATIONAL CUSTOMERS:

Contact Minnich Manufacturing through the following number
to locate a dealer near you.
(419-903-0010)

NOTICE

All orders are treated as Standard Orders
and will ship the same day if received prior to
3PM EST