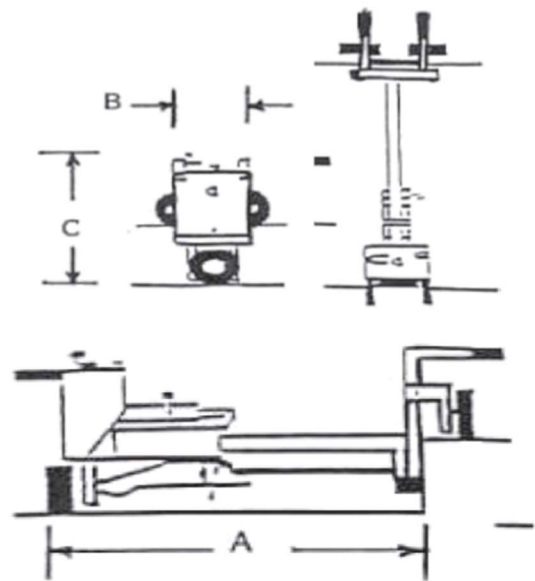


E-Z DRILL

International: +1 (405) 372-0121
Toll Free: (800) 272-0121
Email: sales@ezdrill.com

Specifications

Model 210B



	Horizontal Position	Vertical Position
Drill Depth	18" (45.7 cm)	
Drill Depth w/ Dust Collection Kit	15 3/4" (40.0 cm)	
Drill Bit Diameter	5/8" to 2 1/2" (15.9 mm to 63.5 mm)	
Air Consumption (minimum)	100 cfm (2.8 m3/min)	
Air Consumption w/ Dust Collection Kit (minimum)	140 cfm (4.0 m3/min)	
Minimum Hose Size (ID)	3/4" (19.1 mm)	
Operating Pressure at Drill Motor	90 psi (6.2 bar)	
Drill Distance from Corner	6" (15.2 cm)	N/A
Drill Distance from Ground	3" (7.6 cm)	Up to 12" (30.5 cm)
Length (A)	52 1/4" (132.7 cm)	N/A
Length (A) w/ Back Wheel Removed	46 3/4" (118.7 cm)	N/A
Length (A) w/ Dust Collection Kit	54 3/4" (139.1 cm)	N/A
Length (A) w/ Dust Collection Kit and Back Wheel Removed	49 1/2" (125.7 cm)	N/A
Width (B)	18 1/4" (46.4 cm)	N/A
Height (C)	32" (81.3 cm)	N/A
Height (C) w/ Dust Collection Kit	70 1/2" (179.1 cm)	N/A
Minimum Patch Size w/ Back Wheel Removed @ ⊗ 3"-12" Below Top of Slab	48" (121.9 cm)	N/A
Minimum Patch Size w/ Dust Collection Kit and Back Wheel Removed @ ⊗ 3"-12" Below Top of Slab	51" (129.5 cm)	N/A
Weight	256 lbs. (116.1 kg)	
Weight w/ Dust Collection Kit	347 lbs. (157.4 kg)	
Drill Motor (pneumatic)	CP 32A	
Drill Motor Weight	54 lbs. (24.5 kg)	
Chuck Size	7/8" x 3 1/4" (22.2 mm x 82.6 mm)	
Impact (ft. lbs./blow)	36 fpb (48.8 J)	
Blows/minute	2200 bpm	
Rotations/minute	288 rpm	

⊗ - Center of Hole

Specifications are subject to change without notice