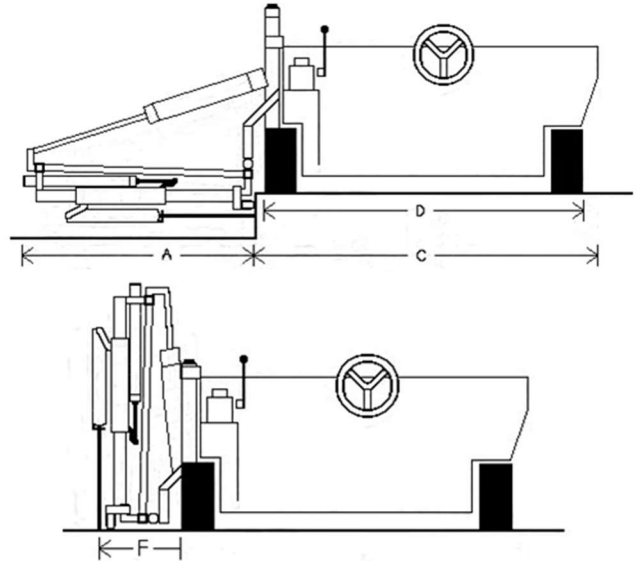


E-Z DRILL

International: +1 (405) 372-0121
Toll Free: (800) 272-0121
Email: sales@ezdrill.com

Specifications

Model 210B-5 SRA



	Horizontal Position	Vertical Position
Drill Depth	18" (45.7 cm)	
Drill Depth w/ Dust Collection Kit	15 3/4" (40.0 cm)	
Drill Bit Diameter	5/8" to 2 1/2" (15.9 mm to 63.5 mm)	
Air Consumption (minimum)	500 cfm (14.2 m3/min)	
Air Consumption w/ Dust Collection Kit (minimum)	660 cfm (18.7 m3/min)	
Minimum Hose Size (ID)	2" (50.8 mm)	
Operating Pressure at Drill Motor	90 psi (6.2 bar)	
Drill Distance from Corner	6" (15.2 cm)	N/A
Drill Distance from Ground	3" (7.6 cm)	Up to 12" (30.5 cm)
Lower Length (A)	47 1/2" (120.7 cm)	N/A
Lower Length (A) w/ Dust Collection Kit	50" (127.0 cm)	N/A
Cart Length (C)	72 1/4" (183.5 cm)	
Overall Length (A) + (C)	119 3/4" (304.2 cm)	N/A
Wheelbase (D)	57 1/4" (145.4 cm)	
Width	78" (198.1 cm)	
Height	40 3/8" (102.6 cm)	47 1/2" (120.7 cm)
Height w/ Dust Collection Kit	65 3/4" (167.0 cm)	
Distance from Wheel to Center of Bit (F)	N/A	23 1/2" (59.7 cm)
Minimum Patch Size @ 3"-12" below top of slab	48" (121.9 cm)	N/A
Minimum Patch Size w/ Dust Collection Kit @ 3"-12" below top of slab	51" (129.5 cm)	N/A
Weight	2812 lbs. (1275.5 kg)	
Weight w/ Dust Collection Kit	3212 lbs. (1456.9 kg)	
Drill Motor (pneumatic)	CP 32A	
Drill Motor Weight	54 lbs. (24.5 kg)	
Chuck Size	7/8" x 3 1/4" (22.2 mm x 82.6 mm)	
Impact (ft. lbs./blow)	36 fpb (48.8 J)	
Blows/minute	2200 bpm	
Rotations/minute	288 rpm	

⊗ - Center of Hole

Specifications are subject to change without notice