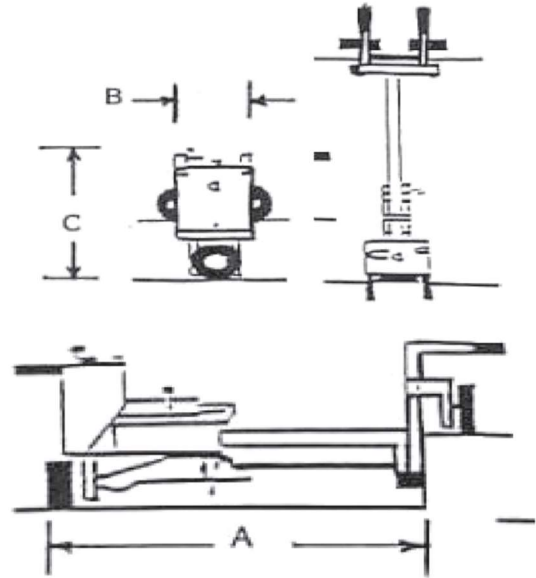


E-Z DRILL

International: +1 (405) 372-0121
 Toll Free: (800) 272-0121
 Email: sales@ezdrill.com

Specifications

Model 110B



	Horizontal Position	Vertical Position
Drill Depth	12" (30.5 cm)	
Drill Depth w/ Dust Collection Kit	9 3/4" (24.8 cm)	
Drill Bit Diameter	5/8" to 2" (15.9 mm to 50.8 mm)	
Air Consumption (minimum)	50 cfm (1.4 m3/min)	
Air Consumption w/ Dust Collection Kit (minimum)	90 cfm (2.6 m3/min)	
Minimum Hose Size (ID)	3/4" (19.1 mm)	
Operating Pressure at Drill Motor	90 psi (6.2 bar)	
Drill Distance from Corner	6" (15.2 cm)	N/A
Drill Distance from Ground	3" (7.6 cm)	Up to 12" (30.5 cm)
Length (A)	41 1/2" (105.4 cm)	N/A
Length (A) w/ Back Wheel Removed	34 7/8" (88.6 cm)	N/A
Length (A) w/ Dust Collection Kit	44" (111.8 cm)	N/A
Length (A) w/ Dust Collection Kit and Back Wheel Removed	37 3/8" (94.9 cm)	N/A
Width (B)	18 1/4" (46.4 cm)	N/A
Height (C)	32" (81.3 cm)	N/A
Height (C) w/ Dust Collection Kit	70 1/2" (179.1 cm)	N/A
Minimum Patch Size w/ Back Wheel Removed @ ⊗ 3"-12" Below Top of Slab	36" (91.4 cm)	N/A
Minimum Patch Size w/ Dust Collection Kit and Back Wheel Removed @ ⊗ 3"-12" Below Top of Slab	39" (99.1 cm)	N/A
Weight	215 lbs. (97.5 kg)	
Weight w/ Dust Collection Kit	306 lbs. (138.8 kg)	
Drill Motor (pneumatic)	CP 22	
Drill Motor Weight	29 lbs. (13.2 kg)	
Chuck Size	7/8" x 3 1/4" (22.2 mm x 82.6 mm)	
Impact (ft. lbs./blow)	24 fpb (32.5 J)	
Blows/minute	2600 bpm	
Rotations/minute	210 rpm	

⊗ - Center of Hole

Specifications are subject to change without notice